

FOR SUBLEASE

FANTASTIC SMALL SPACE AVAILABLE FOR SUBLEASE ON CHURCH STREET

80-84 Church Street, Burlington, VT



Amazing high-visibility corner store front located at the center of Church Street. This space spans the southeast corner of Church and Bank streets, and is currently in use as a toy store. There is a sink inside the space, but no bathroom. Great low-cost opportunity to have a space on Church Street for the price of a cart!

SIZE:
318 +/- SF

USE:
Retail, food service

PRICE:
\$2,750.00/Month, plus utilities

AVAILABLE:
Immediately

PARKING:
On-street and Adjacent Parking Garages

LOCATION:
Church Street Marketplace, Burlington

Information contained herein is believed to be accurate, but is not warranted. This is not a legally binding offer to sell or lease.



For more information, please contact:

YVES BRADLEY

802-363-5696

yb@vtcommercial.com

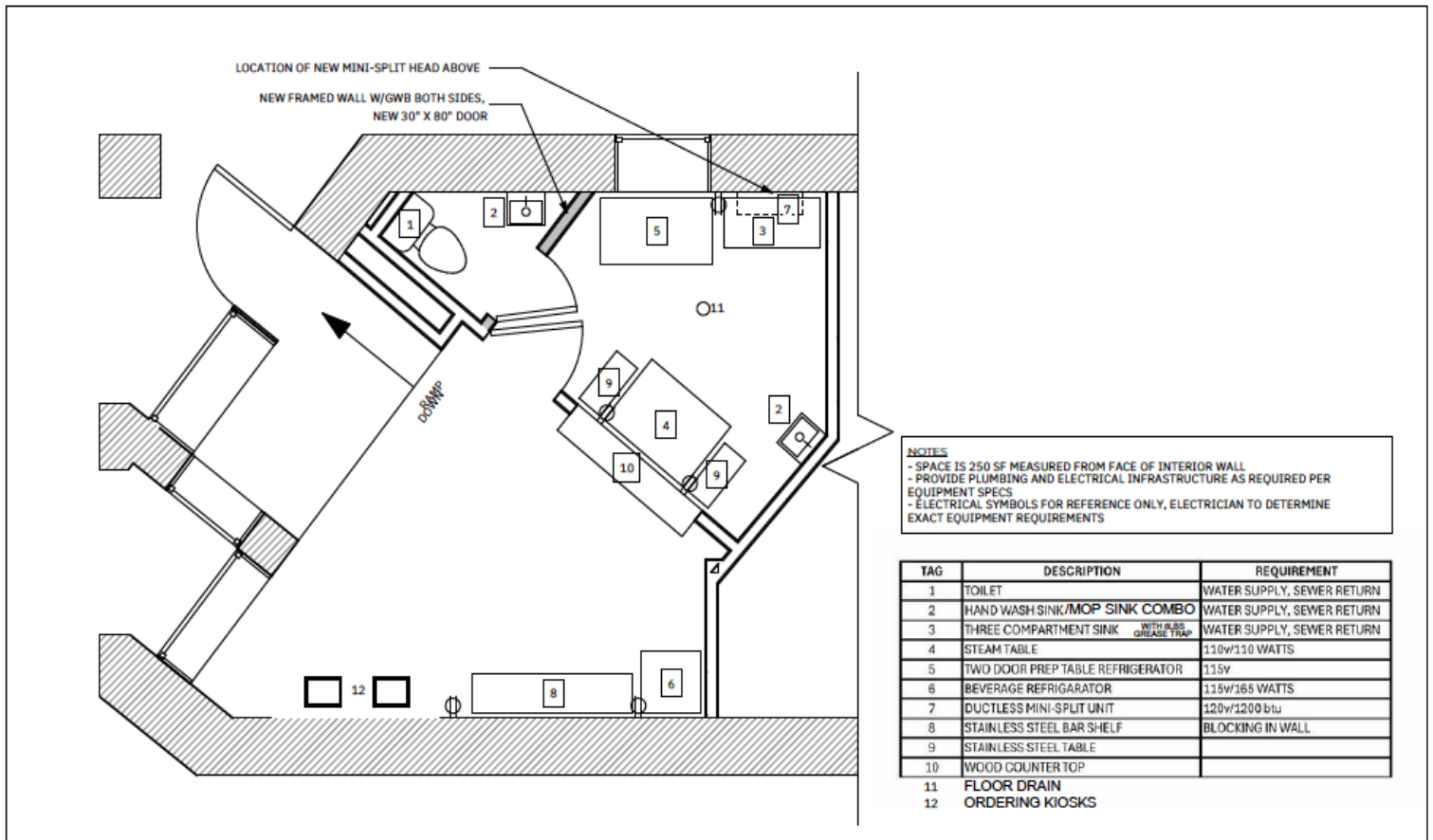
208 FLYNN AVENUE, STUDIO 2i

BURLINGTON, VT 05401

www.vtcommercial.com







Floor Plan

Project: Weenies
Date: 30 April 2024

