

FOR LEASE

EXCEPTIONAL OFFICE SPACE IN THE HEART OF DOWNTOWN MONTPELIER

2 Spring Street, Montpelier, VT



Located at 2 Spring Street in downtown Montpelier, this 507± SF office suite offers an excellent opportunity for businesses seeking a professional presence in Vermont's vibrant capital city. Available immediately, the space is offered at \$1,100 per month gross plus prorated heat and electricity and includes four dedicated parking spaces, a valuable amenity in the downtown area. Montpelier is known for its walkable downtown, historic charm, and strong mix of government, professional services, and local businesses, creating a steady flow of activity throughout the day. Situated just steps from shops, restaurants, and the State House district, this well-located office provides convenience, visibility, and access to one of Vermont's most dynamic small-city business environments.

SIZE:

507 +/- SF

PERMITTED USE:

Office

PRICE:

\$1,100/mo Gross plus Prorated Heat and Electricity

AVAILABLE:

Immediately

PARKING:

4 Parking Spots

LOCATION:

2 Spring Street, Montpelier, VT

Information contained herein is believed to be accurate, but is not warranted. This is not a legally binding offer to sell or lease.



For more information, please contact:

JOHN BEAL

802-598-1168

john.beal@vtcommercial.com

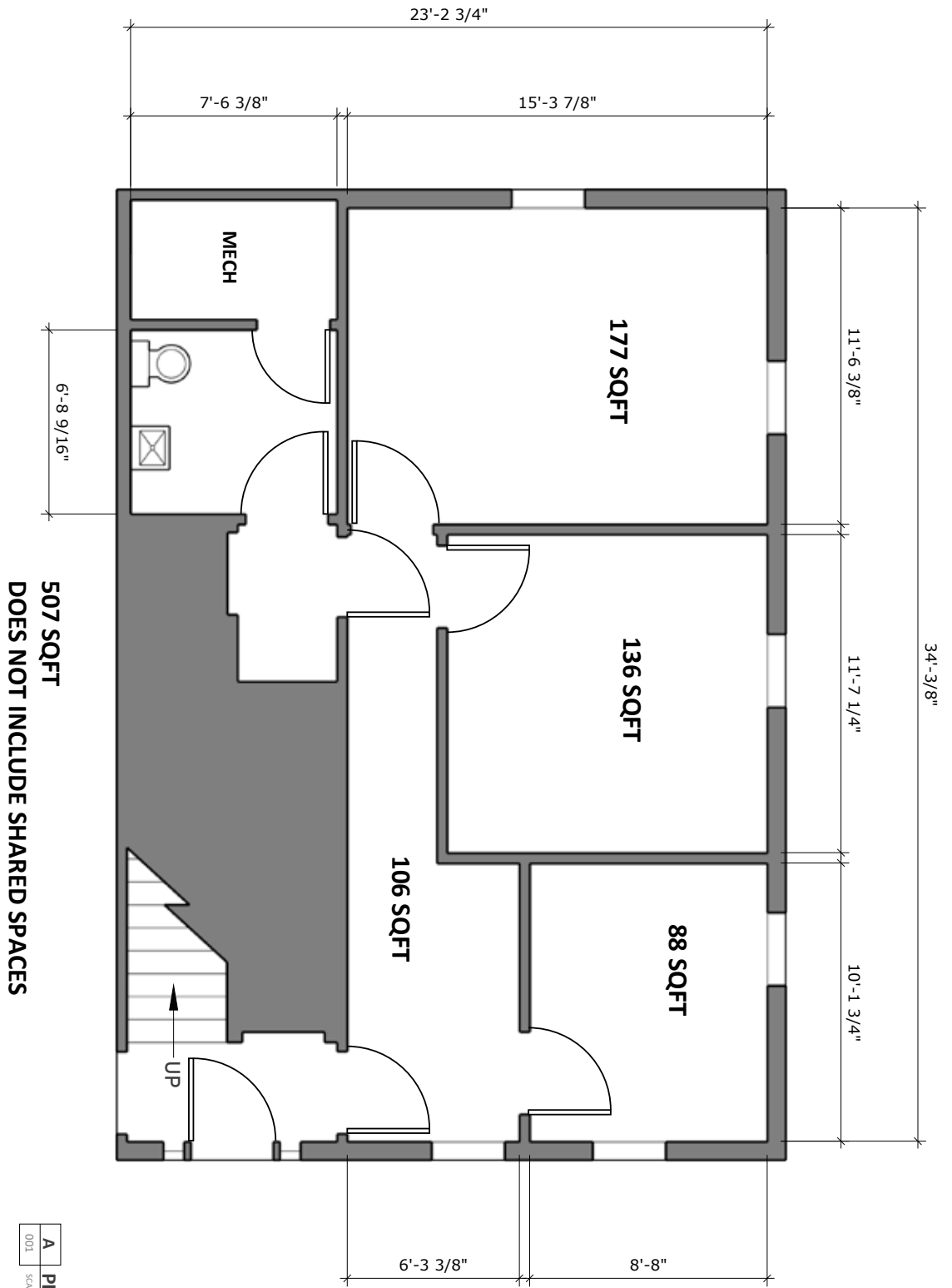
208 FLYNN AVENUE, STUDIO 2i

BURLINGTON, VT 05401

www.vtcommercial.com







A PLAN
001
SCALE: 3/4" = 1'

