

FOR LEASE

CHACE MILL OFFICE SPACE ON THE WINOOSKI RIVER

1 Mill Street, Suite 301/305, Burlington, VT



Furniture available upon request. Office space for lease in the beautifully historic 90,000 square foot Chace Mill building. This open floorplan suite is ready for a new tenant. Amenities include an on site cafe, tons of great food options within walking distance, and free parking.

SIZE:

1,000 - 3,000 +/- SF

PERMITTED USE:

Office

PRICE:

\$14.50/SF NNN (\$6.55) plus utilities

AVAILABLE:

Immediately

PARKING:

On-site

LOCATION:

1 Mill Street, Burlington, VT

Information contained herein is believed to be accurate, but is not warranted. This is not a legally binding offer to sell or lease.



For more information, please contact:

JOHN BEAL

802-598-1168

john.beal@vtcommercial.com

208 FLYNN AVENUE, STUDIO 2i

BURLINGTON, VT 05401

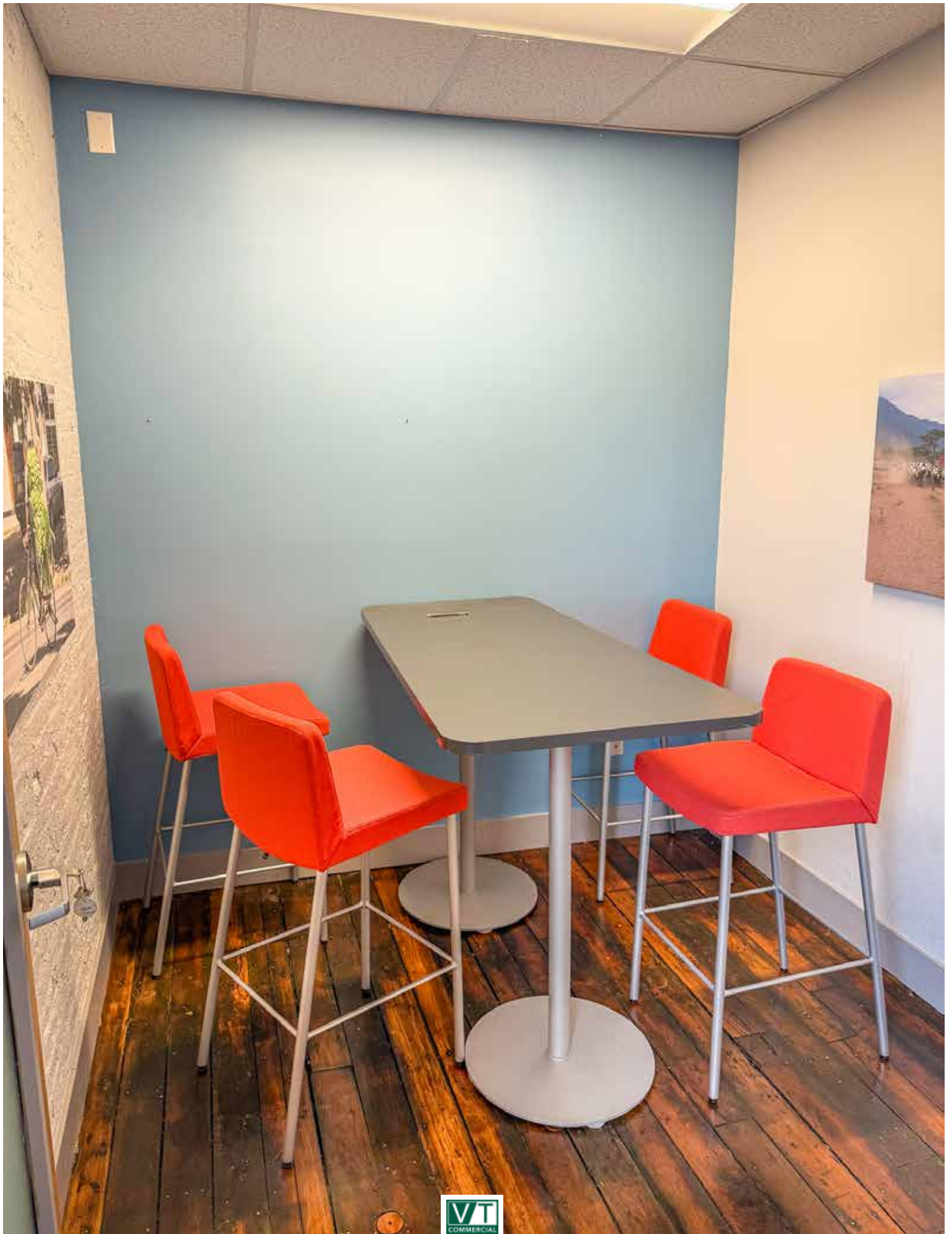
www.vtcommercial.com





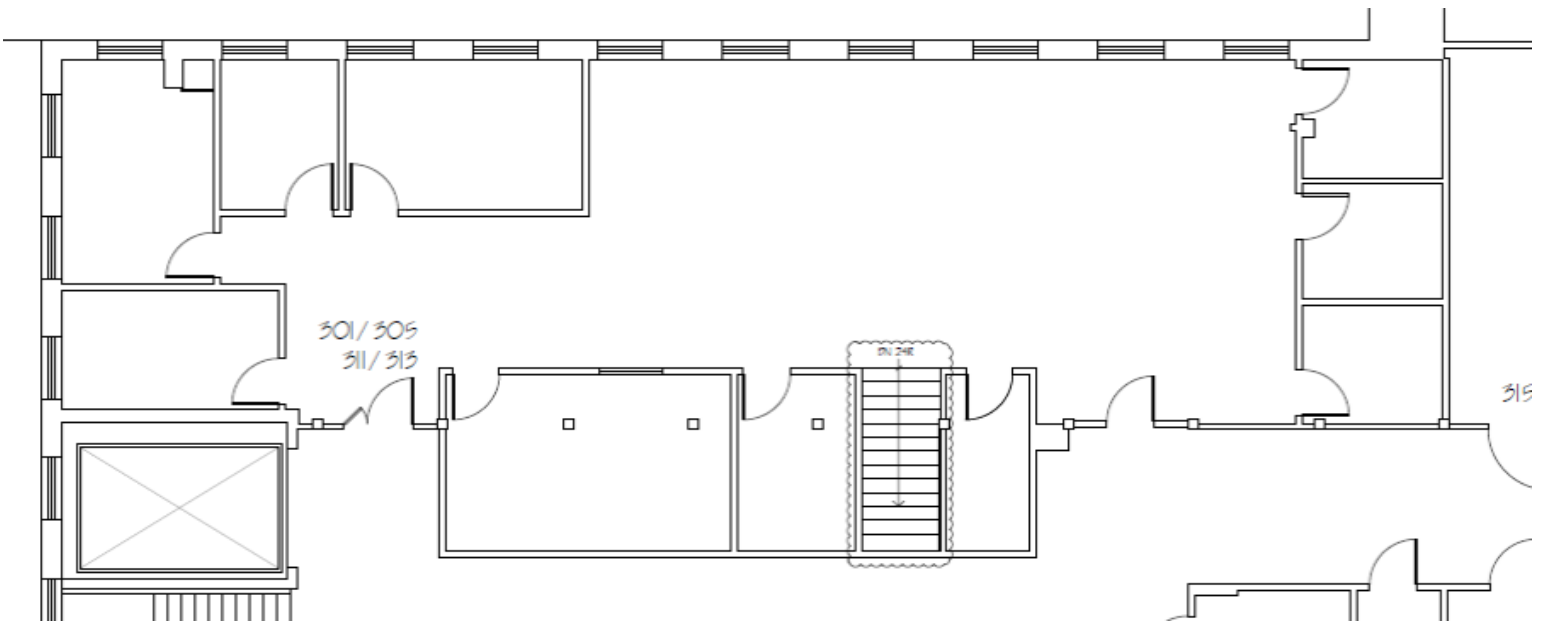




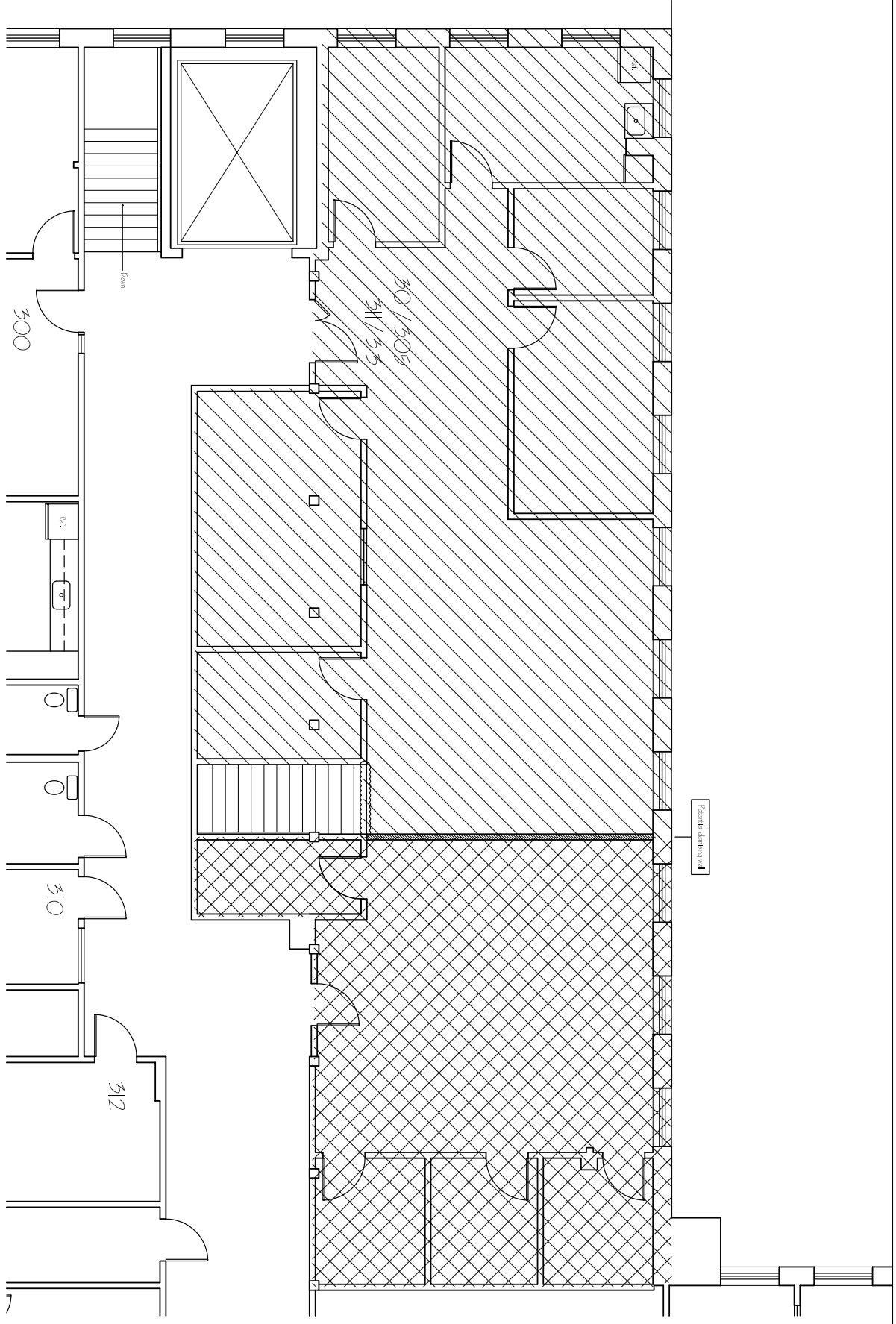








1 Suite 301



Scale: N.T.S.

A-1.3
Suite 301



CHACE MILL
1 Mill Street
Burlington, Vermont
RAMSAY GOUVT ARCHITECTS
PO Box 300 • 7190 Main Street • Manchester Village, V
(802) 362-1480 • FAX (802) 362-0179

Drawn By: PKK
Date: 02 FEB 2006