

# FOR LEASE

## BEAUTIFUL DOWNTOWN MONTPELIER OFFICE

26 Elm Street, Montpelier, VT



Great opportunity to have a larger office footprint in downtown Montpelier within walking distance of the statehouse, retail shops, and many food options. Lots of brick, wood, and windows throughout make this a highly unique space. Please contact us today for a tour.

**SIZE:**

10,601 +/- SF

**USE:**

Office

**PRICE:**

\$10 NNN Plus Utilities

**AVAILABLE:**

Immediately

**PARKING:**

Street

**LOCATION:**

26 Elm Street, Montpelier

Information contained herein is believed to be accurate, but is not warranted. This is not a legally binding offer to sell or lease.



For more information, please contact:

JOHN BEAL

802-598-1168

[john.beal@vtcommercial.com](mailto:john.beal@vtcommercial.com)

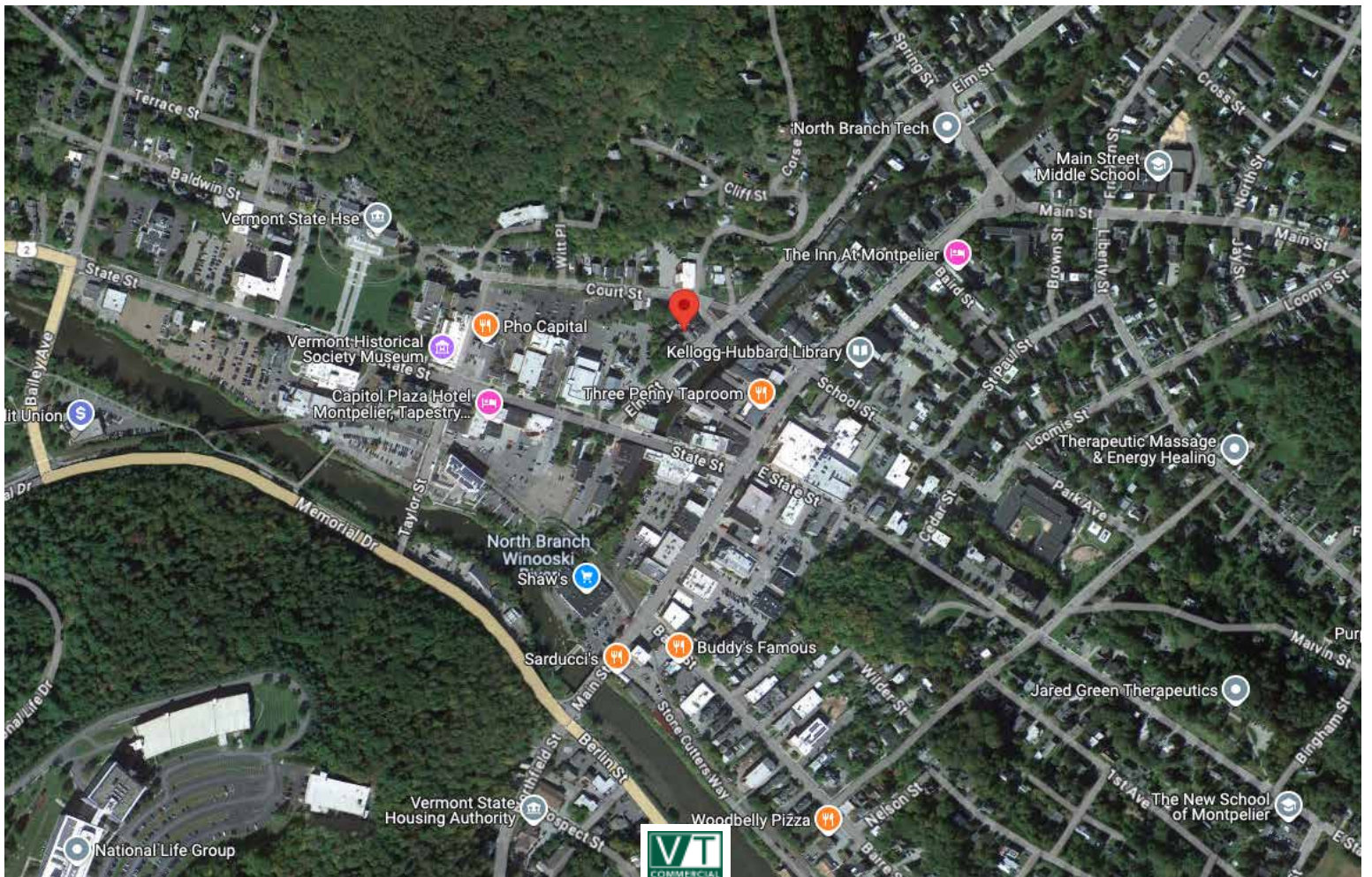
208 FLYNN AVENUE, STUDIO 2i

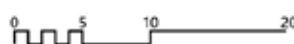
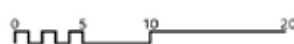
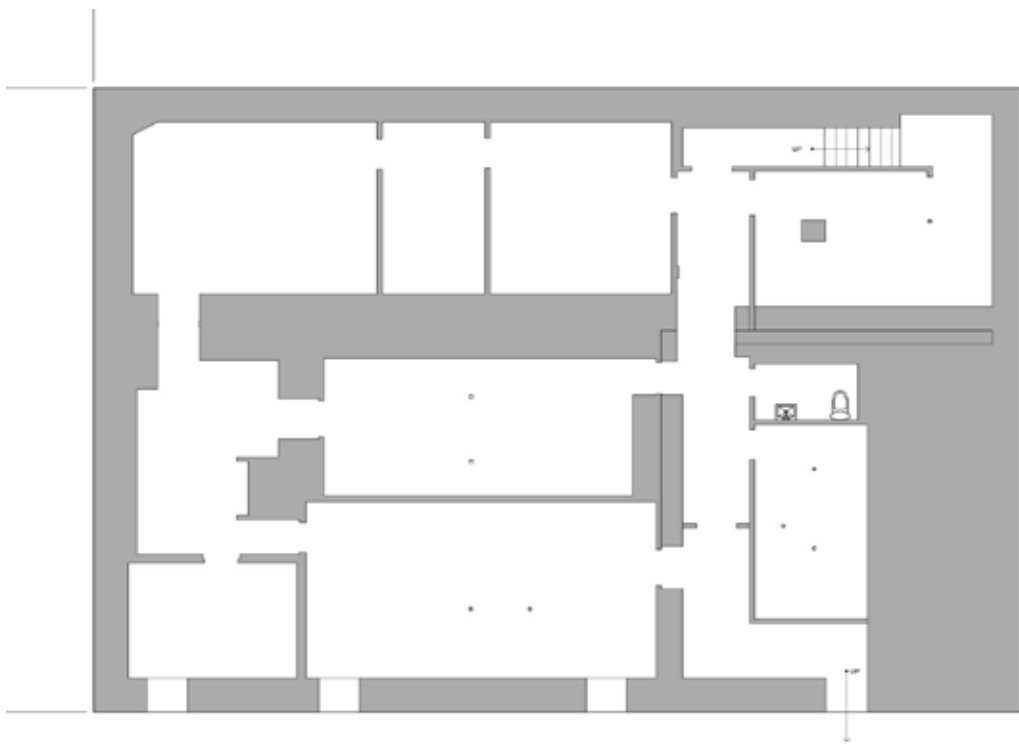
BURLINGTON, VT 05401

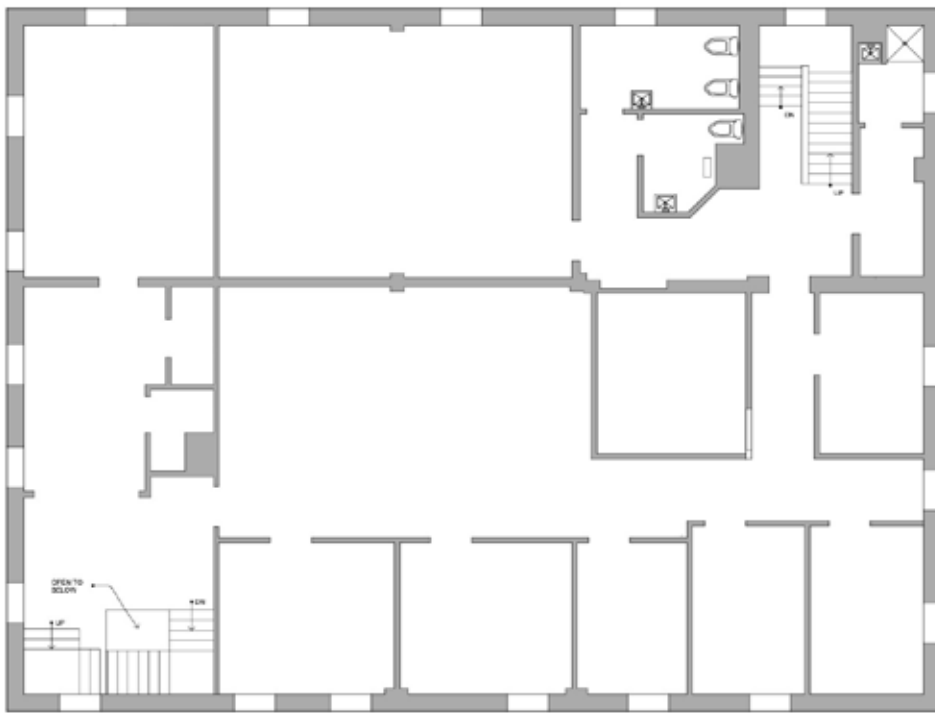
[www.vtcommercial.com](http://www.vtcommercial.com)









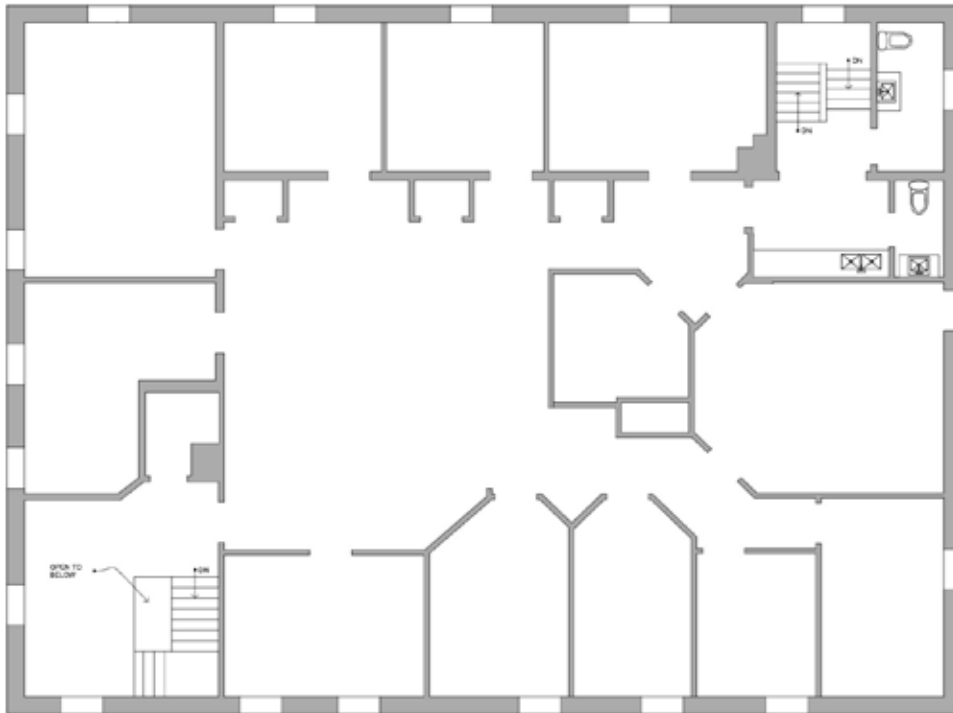


0 5 10 20

7.01.2022

SECOND FLOOR

A  
03



0 5 10 20

7.01.2022

THIRD FLOOR

A  
04