

# FOR LEASE

## FORMER SUB SHOP!

35 White Street, South Burlington, VT



VT Commercial is pleased to offer this former sub shop to the market. Open to all ideas for its new use. 2 coolers, 3 bay sink, single sink, counter, convection equipment in place along with some tables & chairs. Two bathrooms, with open dining area, a back room for prep, storage and office. Optionee will close on this location in September with a renovation plan for the outside. Ideal for Bagel shop, Pizza shop, or Retail. No hood. But offers good parking and multiple entrances (from Williston Road and on White Street).

**SIZE:**  
2,912 SF

**USE:**  
Food sales

**PRICE:**  
\$10,000 NNN plus utilities

**AVAILABLE:**  
Immediately

**PARKING:**  
On site

**LOCATION:**  
35 White Street, South Burlington

Information contained herein is believed to be accurate, but is not warranted. This is not a legally binding offer to sell or lease.



For more information, please contact:

LINDA I. LETOURNEAU

802-343-2107

[linda@vtcommercial.com](mailto:linda@vtcommercial.com)

208 FLYNN AVENUE, STUDIO 2i

BURLINGTON, VT 05401

[www.vtcommercial.com](http://www.vtcommercial.com)











LP SMARTSIDE  
PANEL 12" B&B  
CAVERN STEEL

PAINT EXISTING  
VENT TO MATCH  
SIDING COLOR

S  
I  
G  
N  
A  
G  
E

LP SMARTSIDE  
PANEL  
GARDEN SAGE

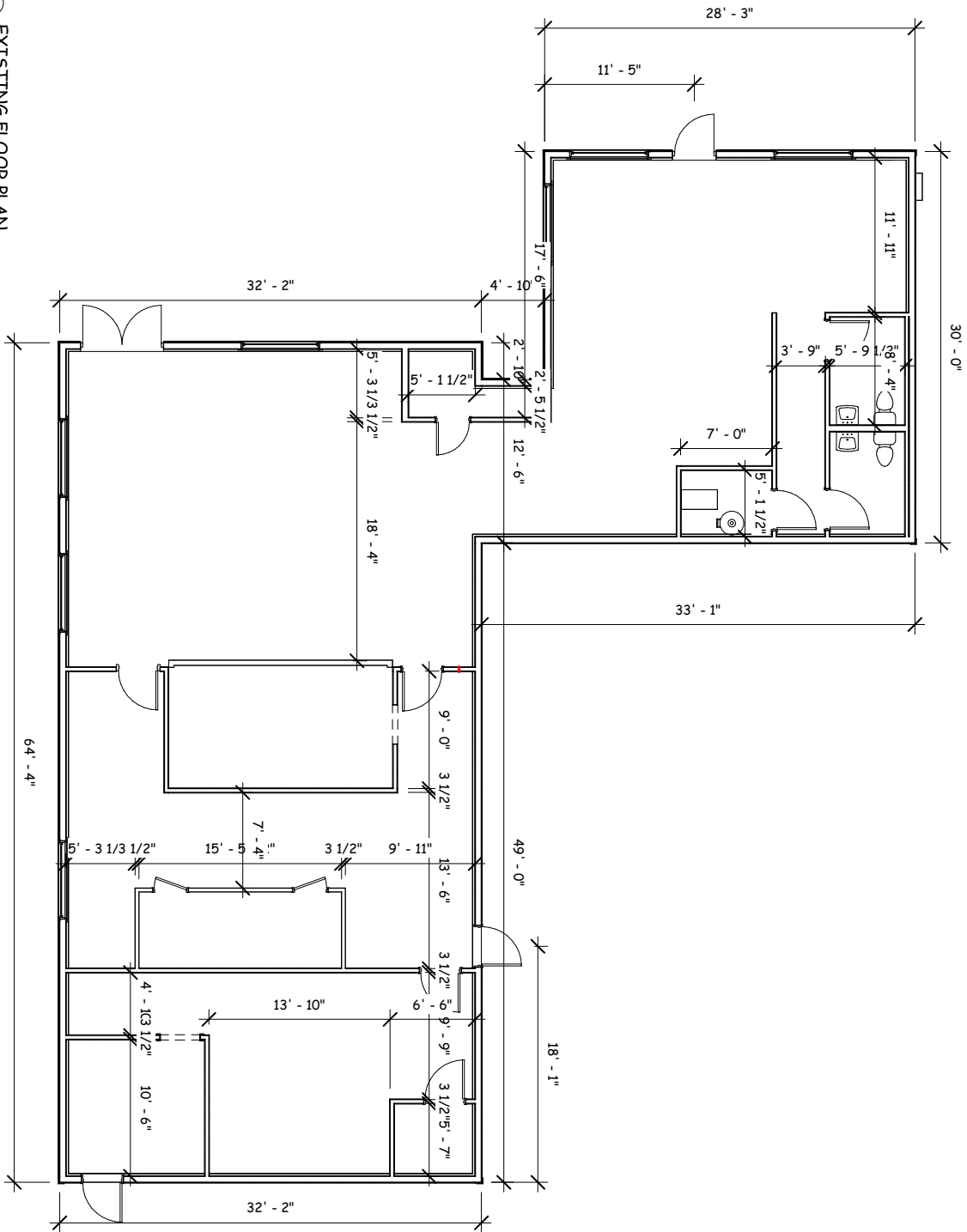
LP SMARTSIDE  
PANEL 12" B&B  
GARDEN SAGE



site

1 EXISTING FLOOR PLAN  
1/8" = 1'-0"

FOR REVIEW  
NOT FOR CONSTRUCTION



A-1.0

EXISTING  
FLOOR PLAN

SHEET TITLE:  
DATE: 9/3/2025  
DRAWN BY: BJA/GS  
CHECKED BY: BJA/GS  
PROJECT: xxxxxx

35 WHITE STREET  
SISTERS & BROTHERS INVESTMENT  
S. BURLINGTON VT



THIS DRAWING IS THE  
PROPERTY OF 64 DESIGN  
STUDIOS, LLC AND IS NOT TO  
BE COPIED, REPRODUCED, OR  
THE CONTENT THEREOF USED,  
IN WHOLE OR IN PART,  
WITHOUT THE PRIOR WRITTEN  
CONSENT OF STEVE GUILD.