

# FOR SALE

## MOUNTAIN ROAD RETAIL BUILDING

1031 Mountain Road, Stowe, VT



VT Commercial is pleased to offer this bustling retail property on the Mountain Road in Stowe. Exceptional fitup in place that includes a large commercial kitchen, bakery, and service kitchen. Stowe has trended as one of the busiest areas in Vermont and continues to get more and more popular. The Mountain Road averages 10,000 cars per day. Please contact us today to request more details.

**SIZE:**

5,201 +/- SF on 1.05 +/- Acres

**USE:**

Retail

**PRICE:**

\$2,500,000

**AVAILABLE:**

Immediately

**PARKING:**

On-Site

**LOCATION:**

1031 Mountain Road, Stowe, VT

Information contained herein is believed to be accurate, but is not warranted. This is not a legally binding offer to sell or lease.



For more information, please contact:

JOHN A. BEAL | YVES BRADLEY

802-864-2000 | 802-363-5696

[jb@vtcommercial.com](mailto:jb@vtcommercial.com) | [yb@vtcommercial.com](mailto:yb@vtcommercial.com)

208 FLYNN AVENUE, STUDIO 2i

BURLINGTON, VT 05401

[www.vtcommercial.com](http://www.vtcommercial.com)





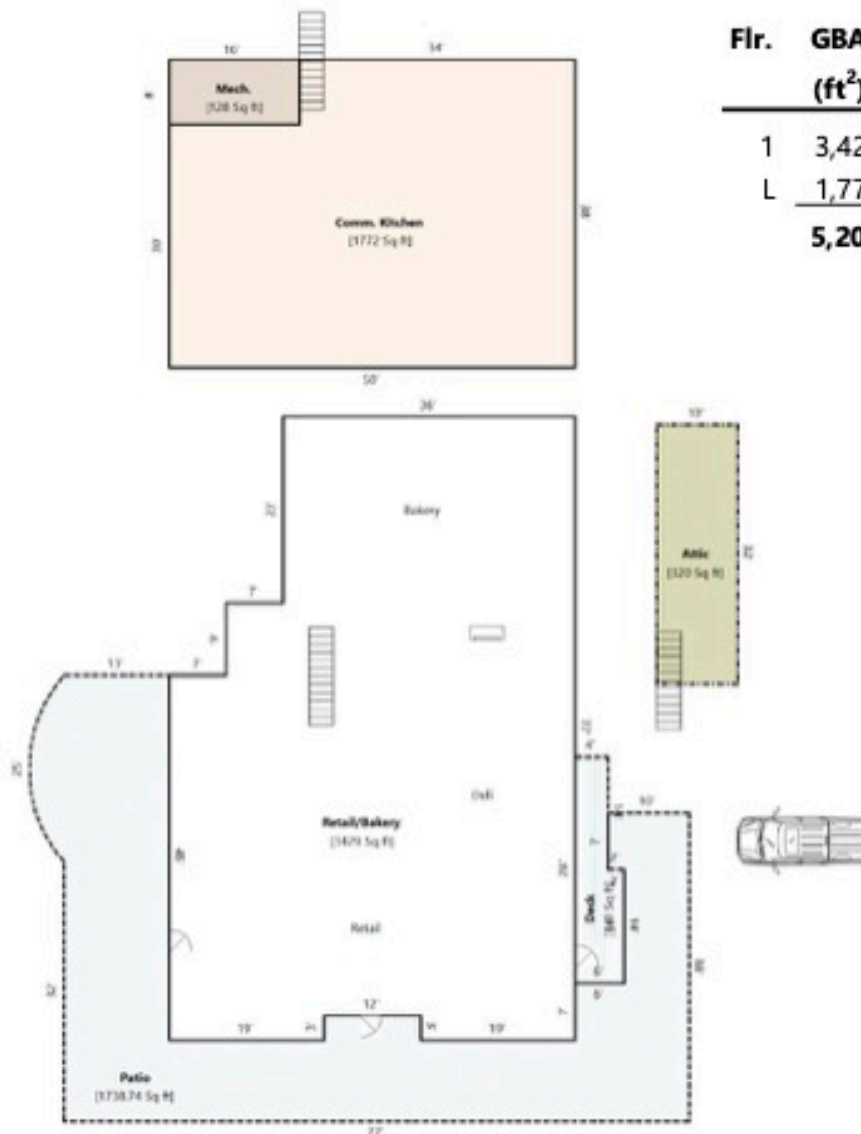












Flr.	GBA (ft <sup>2</sup> )	Layout
1	3,429	Retail / Bakery
L	1,772	Commercial Kitchen
	<b>5,201</b>	<b>Fin. &amp; Cond. GBA</b>

Age	Constructed C-1973, last renovated 2020-2021
Framing/Construction	Wood-framed, Wood Clapboard and Shingle exterior
Roof Cover	Asphalt Shingle
Foundation	Poured Concrete
Exterior Doors	Steel, Wood and Glass
Windows	Double Pane
Interior walls	Drywall / Paneling
Floor cover	Tile / Vinyl
Ceilings	Drywall / Open Frame

