

# FOR LEASE

## BEAUTIFUL, SUNNY SPACE WITH INCREDIBLE LAKE VIEWS!

30 Main Street, Suite 310, Burlington, Vermont



Beautiful sunny office space located on the corner of Main Street and Battery Street in Burlington's Waterfront District. Layout is a mix of a few private offices, a large conference room, kitchen and break room, production room, bullpen area and reception. Unobstructed lake views, secure building, professional layout and services nearby.

**SIZE:**

2,226 +/- SF

**USE:**

General office, medical, service retail

**PRICE:**

\$18.50/SF, NNN (\$9.24/SF; Electricity \$1.87/SF), Gas included

**AVAILABLE:**

Immediately

**PARKING:**

On-site in attached garage for monthly fee

**LOCATION:**

Downtown Burlington

Information contained herein is believed to be accurate, but is not warranted. This is not a legally binding offer to sell or lease.



For more information, please contact:

YVES BRADLEY

802-363-5696

yb@vtcommercial.com

208 FLYNN AVENUE, STUDIO 2i

BURLINGTON, VT 05401

www.vtcommercial.com









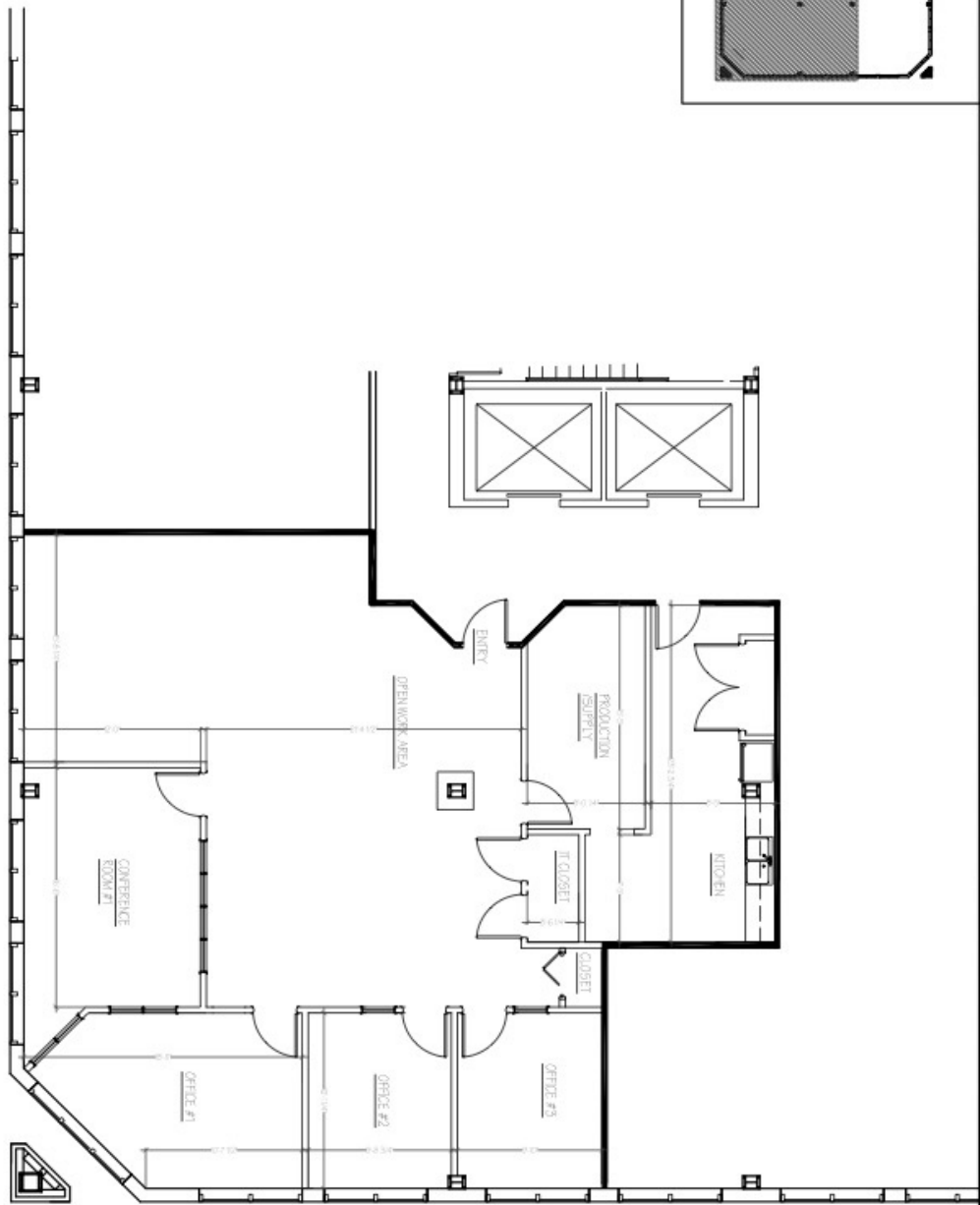
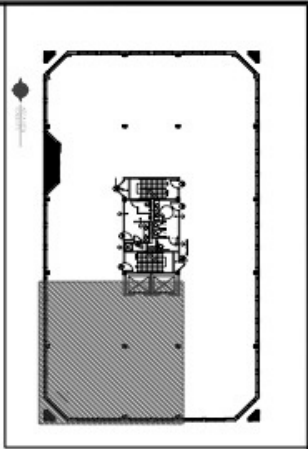








PLAN VIEW  
SCALE 1/8" = 1'-0"



PROJECT NO.	100-000000
REVISION 1	
REVISION 2	
REVISION 3	
REVISION 4	
REVISION 5	
DATE	05/07/2025
SCALE	1/8" = 1'-0"
PROJECT NAME	EXISTING CONDITIONS - SUITE 310
LOCATION	30 MAIN STREET, BURLINGTON VERMONT

PROJECT	EXISTING CONDITIONS - SUITE 310
LOCATION	30 MAIN STREET, BURLINGTON VERMONT



ICV CONSTRUCTION, INC.  
30 MAIN STREET, SUITE 401  
BURLINGTON, VT 05401

