

# FOR LEASE

## THE POPULAR MALTEX BUILDING

431 Pine Street, Suite 113, Burlington, VT



VT Commercial is pleased to offer this small suite for lease at the popular Maltex building located in the South End of Burlington. This suite offers two offices with windows facing Pine Street and an open area ideal for informal lounge or office admin. The suite is located on the first floor just off the main entrance lobby. Post and beam ambiance with wood floors, wood ceiling and some exposed brick. operable windows allow for fresh air and street noise. Come check it out.

**SIZE:**

1,034 SF

**ZONING:**

Enterprise zone - office

**PRICE:**

\$18/SF NNN (\$7/SF) plus your own gas & electric meter

**AVAILABLE:**

Now

**PARKING:**

On Site

**LOCATION:**

Pine Street, Burlington

Information contained herein is believed to be accurate, but is not warranted. This is not a legally binding offer to sell or lease.



For more information, please contact:

LINDA I LETOURNEAU | YVES BRADLEY

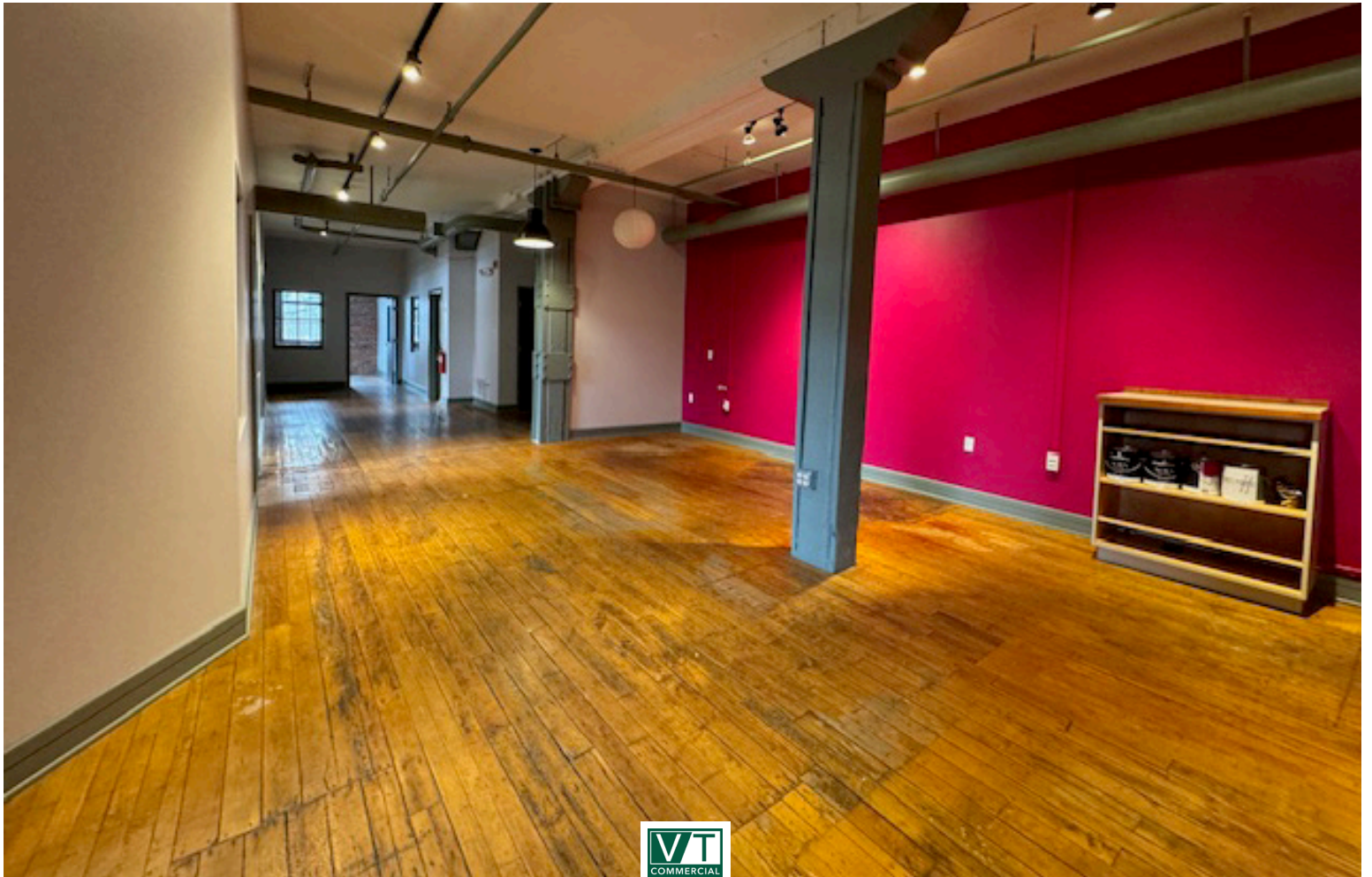
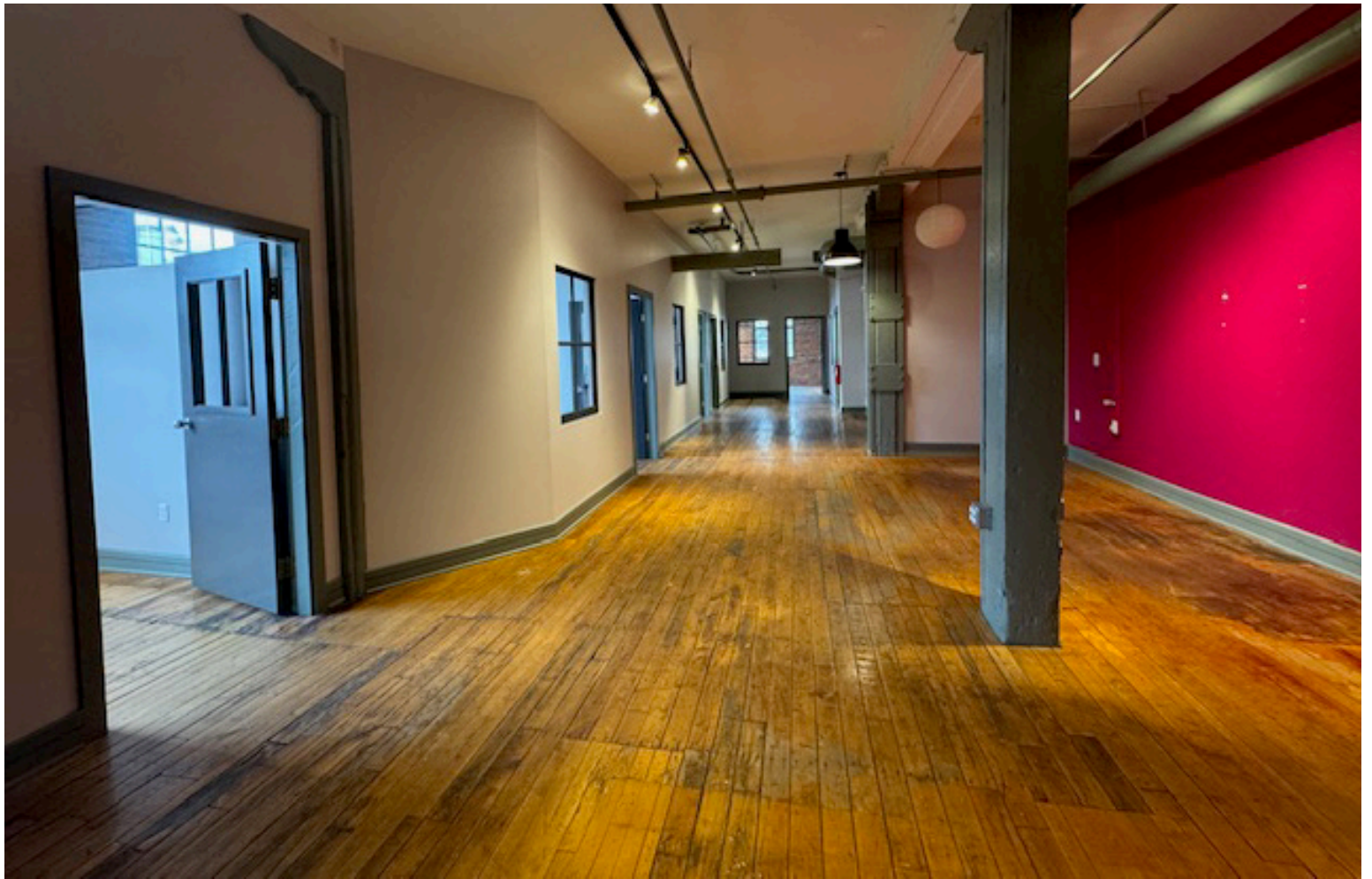
802-343-2107 | 802-363-5696

[linda@vtcommercial.com](mailto:linda@vtcommercial.com) | [yb@vtcommercial.com](mailto:yb@vtcommercial.com)

208 FLYNN AVENUE, STUDIO 2i

BURLINGTON, VT 05401

[www.vtcommercial.com](http://www.vtcommercial.com)





Cheryl O'Leary, AIA, LEED AP  
 P.O. Box 5026, Burlington, VT 05409  
 802-289-4451 cheryl@cheryl.com

Scale: 1/8" = 1'-0"

# FIRST FLOOR PLAN



Walker Building  
 431 Pine Street, Burlington, VT 05401  
 October 4, 2010

