

FOR LEASE

BEAUTIFUL SPACE IN HISTORIC WAREHOUSE

47 Maple Street, on Burlington's Waterfront, Burlington, VT



Beautiful space in Historic Warehouse on Burlington's Waterfront. With over 47,000 square feet of space along Burlington's waterfront, this facility supports Vermont's creative and business communities. This historically renovated building exudes industrial charm, featuring original wood floors, exposed beams, brick walls, high ceilings, and west-facing offices with raised decks offering stunning lake views. The suite includes a kitchen, multiple private offices, a conference room, and the exclusive use of the rooftop penthouse space two days a month. Three on-site parking spaces are also included in the monthly rent. If you're drawn to the ambiance of warmly lit wood floors, exposed brick, beams, and high ceilings, this is the place for you.

SIZE:

2,100 +/- SF

USE:

Office, manufacturing, medical, spa, production, R&D, etc.

PRICE:

\$5,200/Month Gross includes 3 parking spaces and the use of the Rooftop Penthouse for two days a month!

AVAILABLE:

Immediately

PARKING:

Three (3) parking spaces included with rent, additional parking available on-site on a fee basis

LOCATION:

47 Maple Street, Burlington

Information contained herein is believed to be accurate, but is not warranted. This is not a legally binding offer to sell or lease.



For more information, please contact:

YVES BRADLEY

802-363-5696

yb@vtcommercial.com

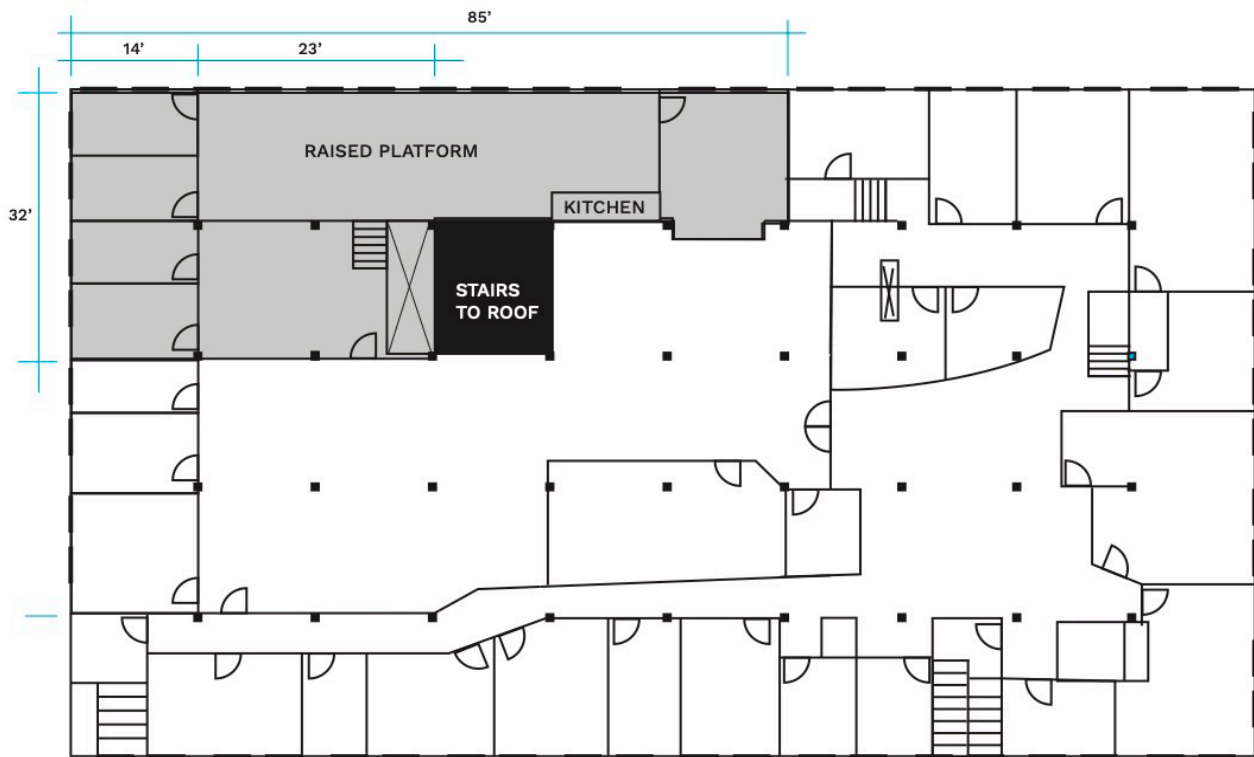
208 FLYNN AVENUE, STUDIO 2i

BURLINGTON, VT 05401

www.vtcommercial.com








**KARMA
BIRD
HOUSE**

47 Maple Street - 3rd Floor - option 3 +-2,100 sq ft

