

FOR LEASE

INCREDIBLE OFFICE WITH LAKE VIEWS AT 30 MAIN STREET!

30 Main Street, Suite 210, Burlington, Vermont



Situated on the corner of Main and Battery Streets, 30 Main St. is a 6 story – 58,700 sf Class A commercial building that is part of the Gateway Square complex. Offering a mix of office / retail / spa spaces, the complex provides an attached 324 vehicle three-story parking garage available for tenants and customers alike. Each level of the building offers amazing west-facing Lake and Adirondack views. The building's entrance is complemented by a beautiful gazebo style patio. This suite offers amazing views, a great layout, and is located in one of Downtown Burlington's nicest buildings. Call now for a showing!

SIZE:

3,766 +/- SF

USE:

General office

PRICE:

\$18.50/SF, NNN (\$8.50/SF; Electricity \$1.44/SF), Gas included

AVAILABLE:

Immediately

PARKING:

On-site in attached garage for monthly fee

LOCATION:

Downtown Burlington

Information contained herein is believed to be accurate, but is not warranted. This is not a legally binding offer to sell or lease.



For more information, please contact:

YVES BRADLEY

802-363-5696

yb@vtcommercial.com

208 FLYNN AVENUE, STUDIO 2i

BURLINGTON, VT 05401

www.vtcommercial.com

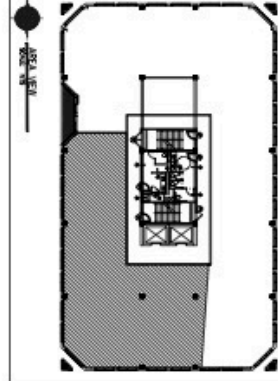
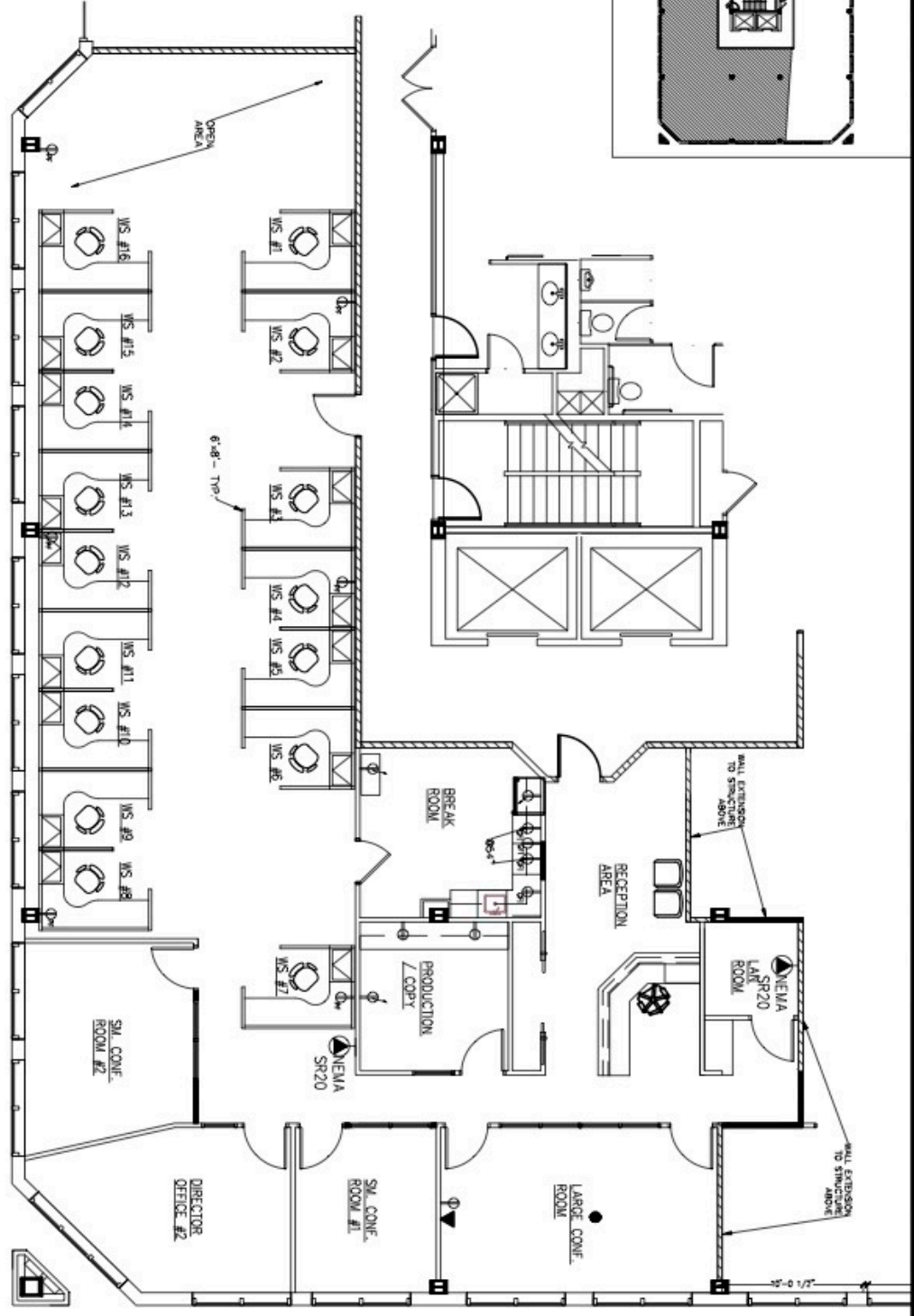








PLAN VIEW
SCALE: 1/8"=1'



REVISIONS:	PROJECT:
REVISION 1	30 MAIN ST., BURLINGTON, VT
REVISION 2	
REVISION 3	
REVISION 4	
REVISION 5	
DATE: 9/10/2018	
SCALE: AS NOTED	
PROJECT: A-2	
DRAWN BY: [Signature]	
CHECKED BY: [Signature]	

PROJECT:	ICV CONSTRUCTION, INC.
LOCATION:	30 MAIN STREET, SUITE 401 BURLINGTON, VT 05401



ICV CONSTRUCTION, INC.
30 MAIN STREET, SUITE 401
BURLINGTON, VT 05401

