

# FOR LEASE

## DOWNTOWN MONTPELIER OFFICE

58 State Street, Montpelier, VT



Downtown Montpelier location. Currently outfitted for office use, but convertible to any use. Excellent location for Brew Pub, Bar, Restaurant! Handicap accessible, stand alone masonry building in the heart of downtown Montpelier. 14 parking spaces on site. Waterfront Deck. Tons of Historic Character!

**SIZE:**

5,400 +/- SF

**USE:**

Restaurant/Bar, Office

**PRICE:**

\$19.50/SF NNN

**AVAILABLE:**

Immediately

**PARKING:**

Ample, on-site

**LOCATION:**

58 State Street, Montpelier, VT

Information contained herein is believed to be accurate, but is not warranted. This is not a legally binding offer to sell or lease.



For more information, please contact:

JOHN A. BEAL

802-864-2000

[jb@vtcommercial.com](mailto:jb@vtcommercial.com)

208 FLYNN AVENUE, STUDIO 2i

BURLINGTON, VT 05401

[www.vtcommercial.com](http://www.vtcommercial.com)







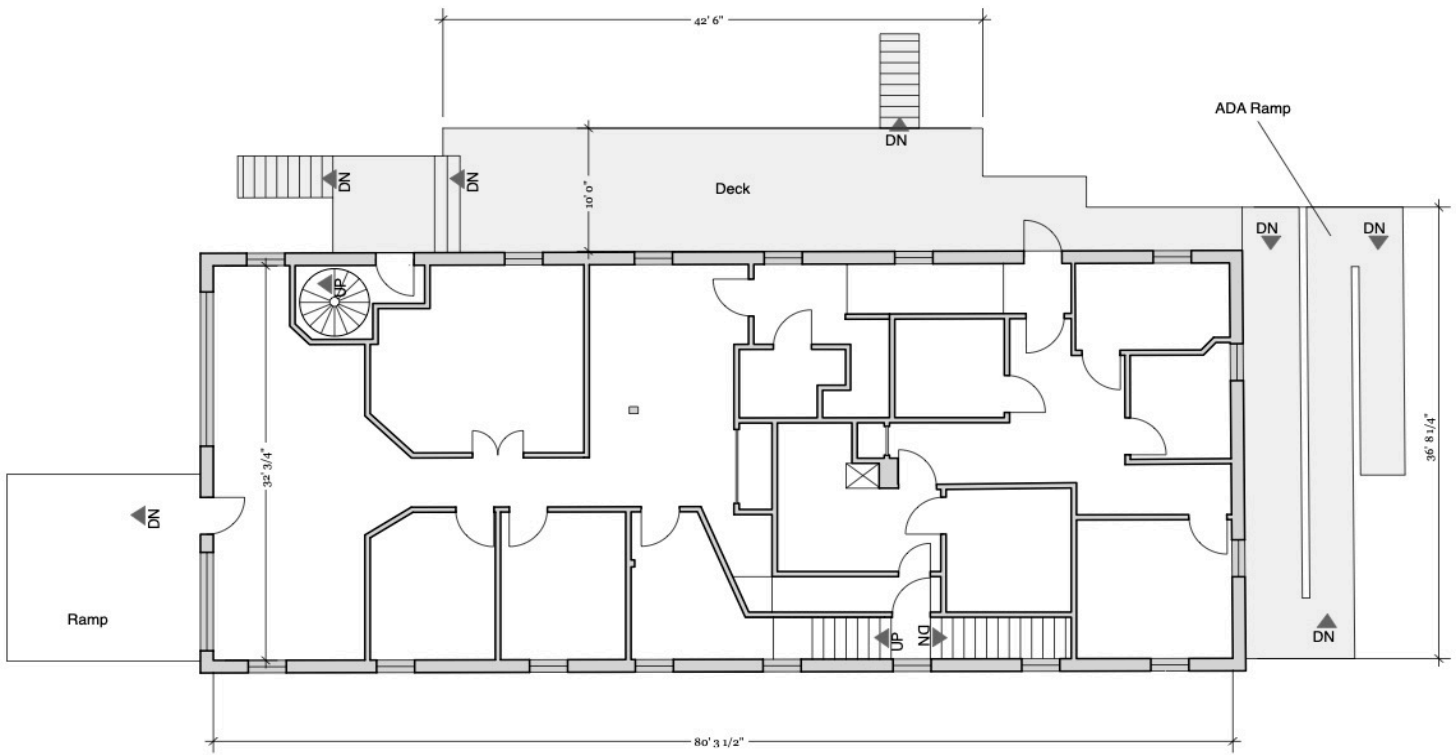












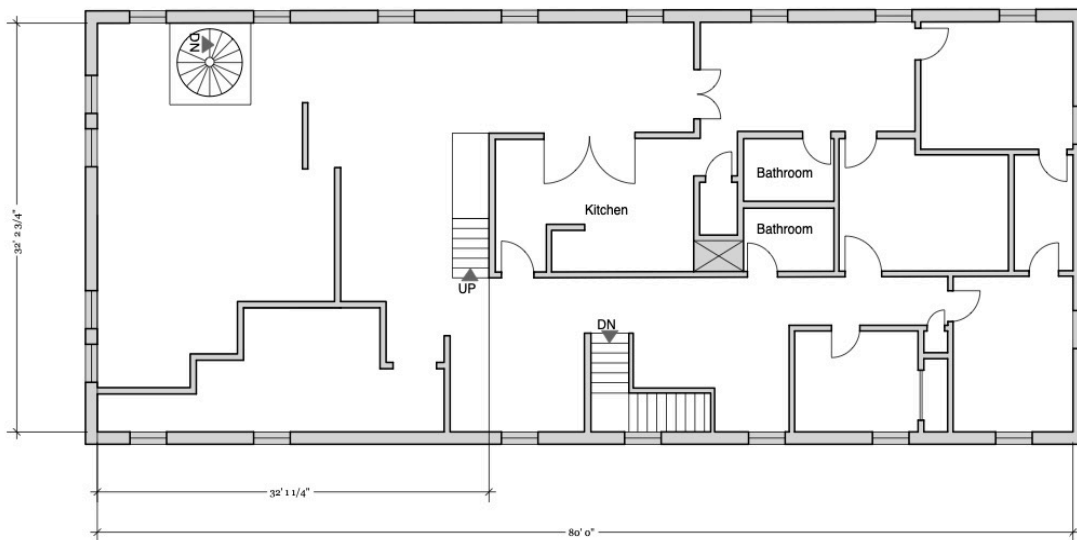
Montpelier Property Management  
70 Main St Montpelier VT 05602  
(802)223-3166 | centralvtrentals@gmail.com

ISSUE  
04.29.14  
NOT TO SCALE

58 STATE ST  
MONTPELIER VT

First Floor

1



Montpelier Property Management  
70 Main St Montpelier VT 05602  
(802)223-3166 | centralvtrentals@gmail.com

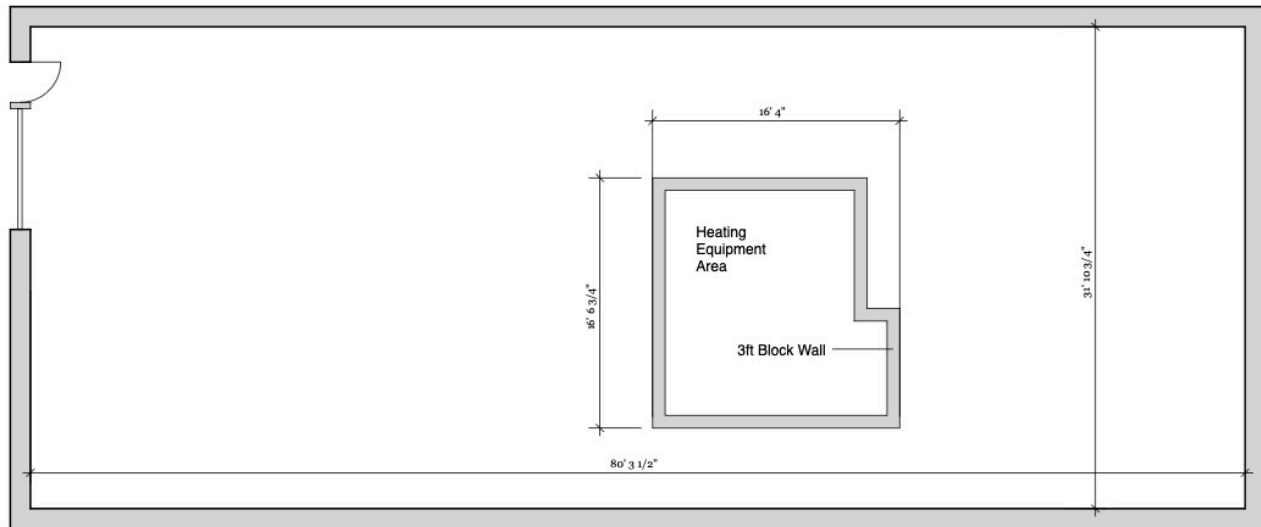
ISSUE  
04.29.14  
NOT TO SCALE

58 STATE ST  
MONTPELIER VT

Second Floor

2





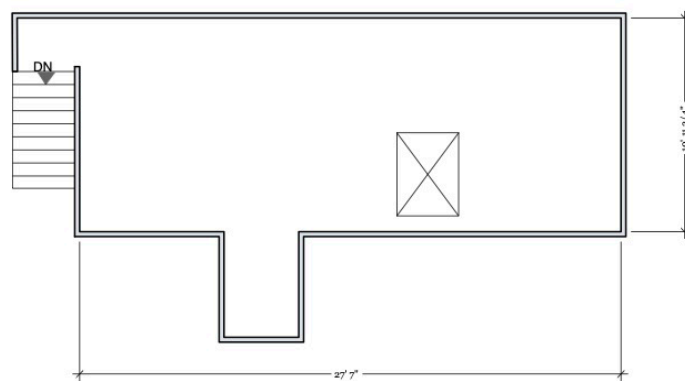
Montpelier Property Management  
70 Main St Montpelier VT 05602  
(802)223-3166 | centralvtrentals@gmail.com

ISSUE  
04.29.14  
NOT TO SCALE

58 STATE ST  
MONTPELIER VT

Basement

3



Montpelier Property Management  
70 Main St Montpelier VT 05602  
(802)223-3166 | centralvtrentals@gmail.com

ISSUE  
04.29.14  
NOT TO SCALE

58 STATE ST  
MONTPELIER VT

Loft

4