

# FOR LEASE

## NEW DOWNTOWN MONTPELIER OFFICE SPACE

575 Stone Cutters Way, Montpelier, VT



Beautiful turnkey office space with a riverfront location, easy access, and great parking. Right next to the bike path. Neighboring the Co-Op. Steps from Main Street. Easy access to Interstate 89. Please contact us today for a tour of this space.

**SIZE:**

3,265, 5,390, or 8,355 +/- SF

**USE:**

Office

**PRICE:**

\$17/SF Gross (Includes Gas & Electricity Allowance of \$2.50/SF)

**AVAILABLE:**

Immediately

**PARKING:**

Ample On Site

**LOCATION:**

575 Stone Cutters Way, Montpelier

Information contained herein is believed to be accurate, but is not warranted. This is not a legally binding offer to sell or lease.



For more information, please contact:

JOHN A. BEAL

802-864-2000

[jb@vtcommercial.com](mailto:jb@vtcommercial.com)

208 FLYNN AVENUE, STUDIO 2i

BURLINGTON, VT 05401

[www.vtcommercial.com](http://www.vtcommercial.com)

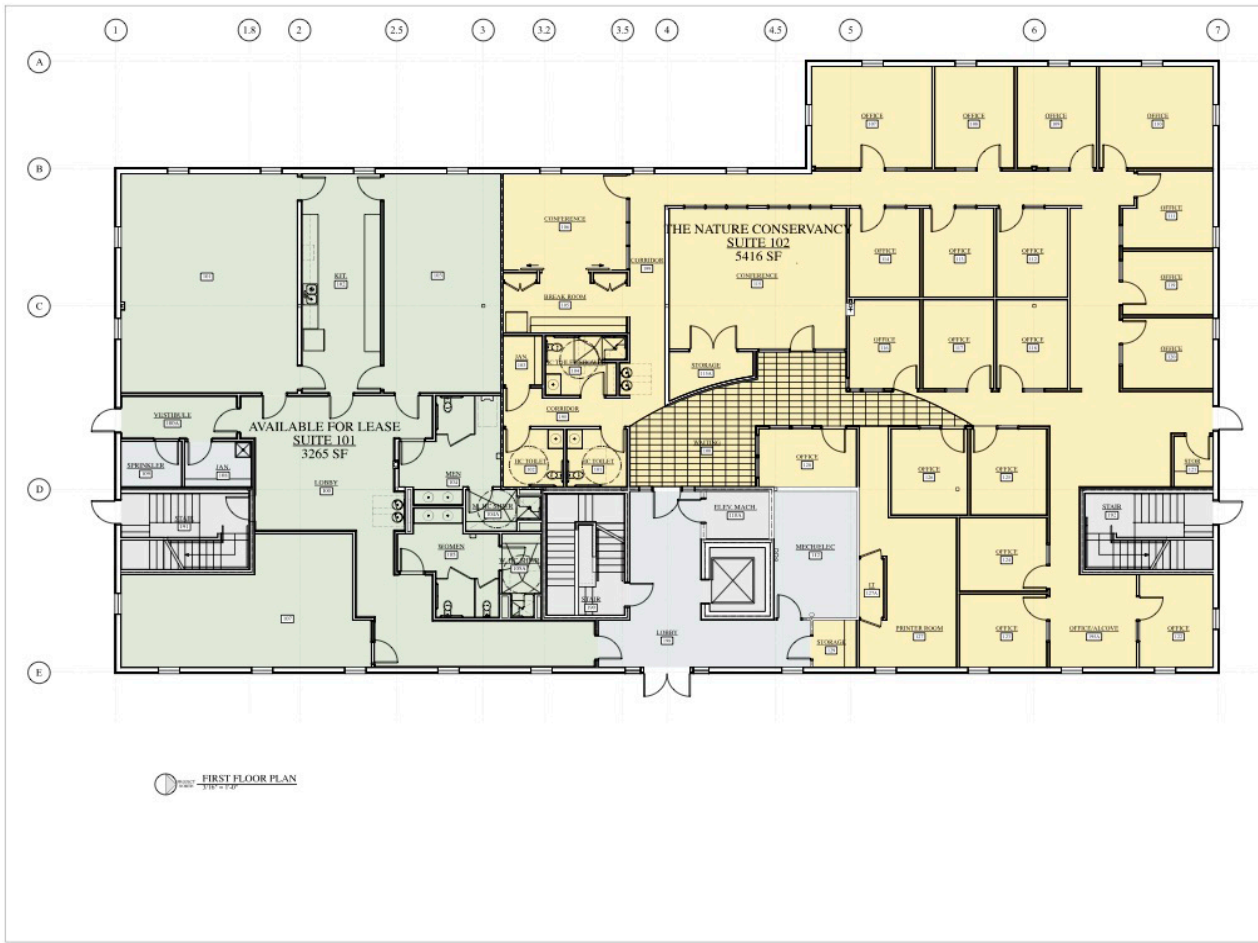












SMITH  
ALVAREZ  
SIENKIEWYCZ  
ARCHITECTS  
117 St Paul Street  
3rd Floor  
Burlington VT  
05401

P: 802.863.2227  
F: 802.863.0693

CONSULTANTS

SAS PROJECT NUMBER: 0215

PROJECT

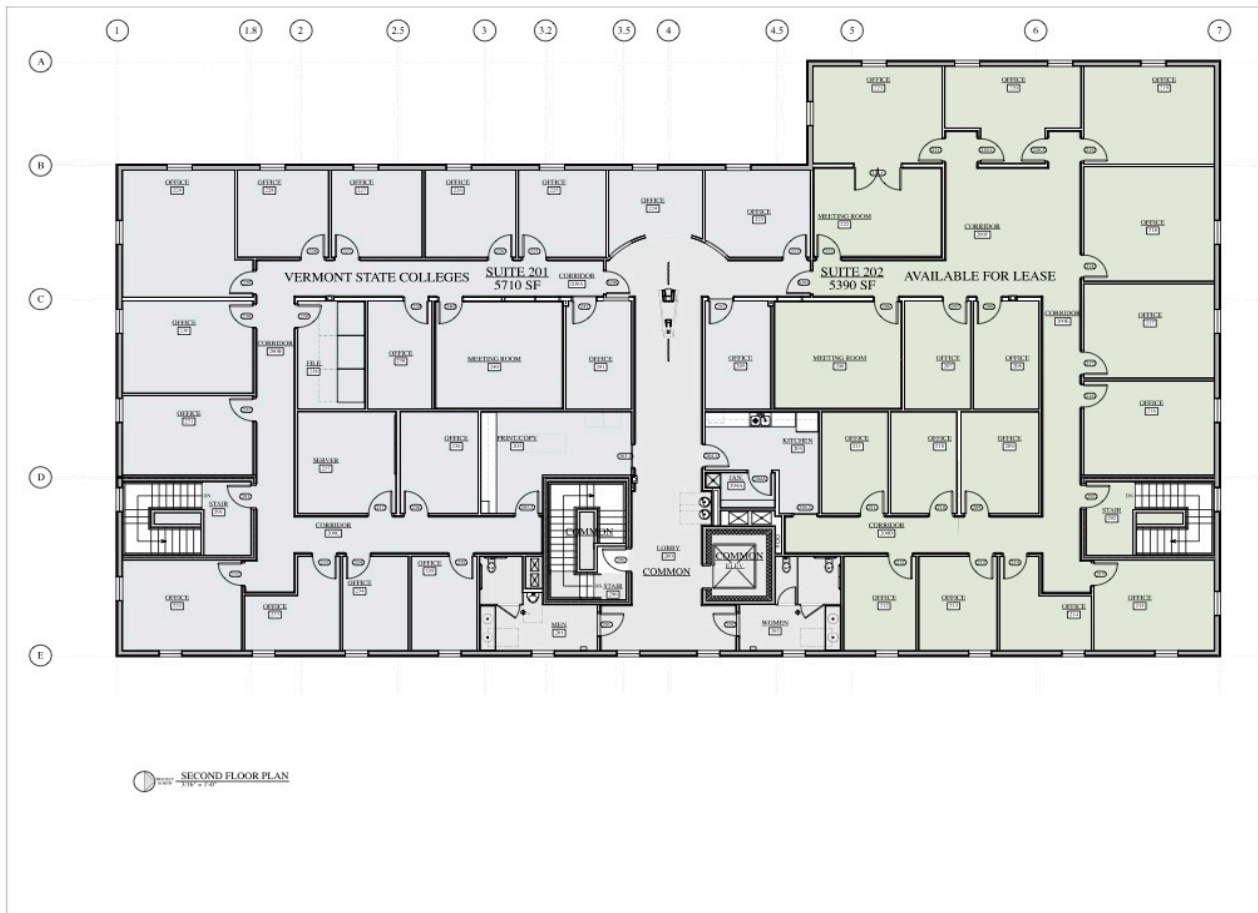
575 STONE  
CUTTERS WAY  
MONTPELIER, VT

DATE: MAY 27, 2022  
SCALE: AS NOTED  
DRAWN BY: SL

REVISIONS

FIRST FLOOR PLAN  
LEASE SPACE

A-1



SMITH  
ALVAREZ  
SIENKIEWYCZ  
ARCHITECTS  
117 St Paul Street  
3rd Floor  
Burlington VT  
05401

P: 802.863.2227  
F: 802.863.0693

CONSULTANTS

SAS PROJECT NUMBER: 0215

PROJECT

575 STONE  
CUTTERS WAY  
MONTPELIER, VT

DATE: MAY 27, 2022  
SCALE: AS NOTED  
DRAWN BY: SL

REVISIONS

SECOND FLOOR PLAN  
LEASE SPACE

A-2

