

FOR LEASE

NEW DOWNTOWN MONTPELIER OFFICE SPACE

575 Stone Cutters Way, Montpelier, VT



Beautiful turnkey office space with a riverfront location, easy access, and great parking. Right next to the bike path. Neighboring the Co-Op. Steps from Main Street. Easy access to Interstate 89. Please contact us today for a tour of this space.

SIZE:

2,460 SF

USE:

Office

PRICE:

\$17/SF Gross (Includes Gas & Electricity Allowance of \$2.50/SF)

AVAILABLE:

Immediately

PARKING:

Ample On Site

LOCATION:

575 Stone Cutters Way, Montpelier

Information contained herein is believed to be accurate, but is not warranted. This is not a legally binding offer to sell or lease.



For more information, please contact:

JOHN A. BEAL

802-864-2000

jb@vtcommercial.com

208 FLYNN AVENUE, STUDIO 2i

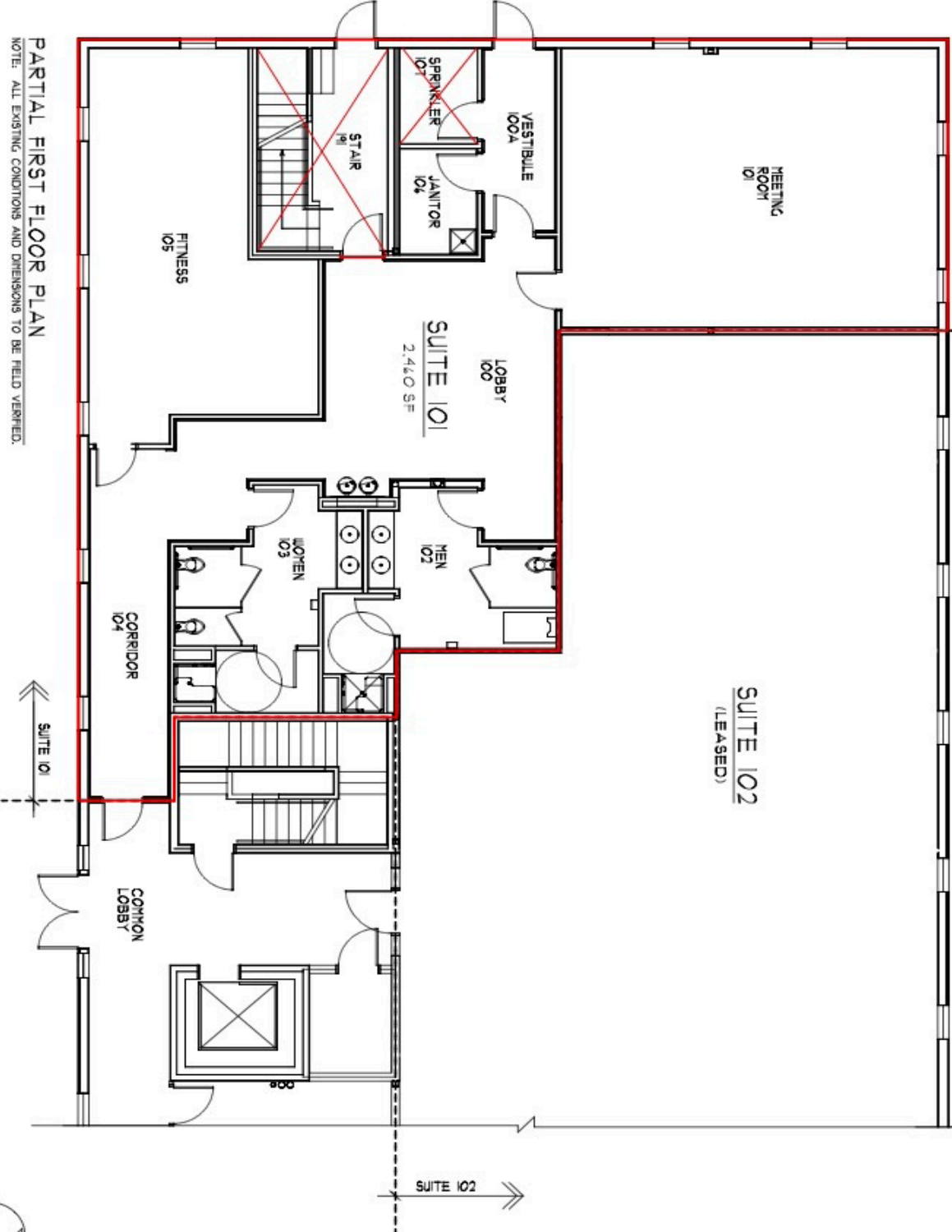
BURLINGTON, VT 05401

www.vtcommercial.com





SUITE 101 SUITE 102



PARTIAL FIRST FLOOR PLAN
NOTE: ALL EXISTING CONDITIONS AND DIMENSIONS TO BE FIELD VERIFIED.

0' 5' 10' 15' 20'
SCALE (IN FEET)



A-1

CONNOR
CONTRACTING, INC.
1100 U.S. Route 2
Burlington, Vermont 05402
Tel: (802) 272-2441
Fax: (802) 272-2444
burlington@connorcontracting.com
burlington@connorcontracting.com

278 South Main Street, Suite #3
St. Albans, Vermont 05478
Tel: (802) 527-1100
Fax: (802) 527-1101
stalbans@connorcontracting.com

REVISIONS
DATE
REVISION

THIS DRAWING IS THE SOLE PROPERTY OF CONNOR CONTRACTING, INC. AND IS LOANED TO THE CLIENT FOR THE PROJECT ONLY. IT IS NOT TO BE REPRODUCED OR COPIED IN WHOLE OR IN PART WITHOUT THE WRITTEN PERMISSION OF CONNOR CONTRACTING, INC. ANY INFORMATION TO OTHERS WITHOUT THE WRITTEN PERMISSION OF CONNOR CONTRACTING, INC. IS STRICTLY PROHIBITED. CONSTRUCTION, CONSULTATION, EXAMINATION OF OTHER DRAWINGS AND/OR WITHIN CONSTRUCTION.

**PRELIMINARY-
SCHEMATIC
FOR REVIEW
NOT FOR
CONSTRUCTION**
NOV. 18, 2024

**RENOVATIONS TO
FIRST FLOOR
515 STONE CUTTERS WAY
MONTPELIER, VT**

DATE	SCALE
DRAWN BY	CHECKED BY
PROJECT NO.	TITLE NAME
XX-XXX	
DRAWING NUMBER	

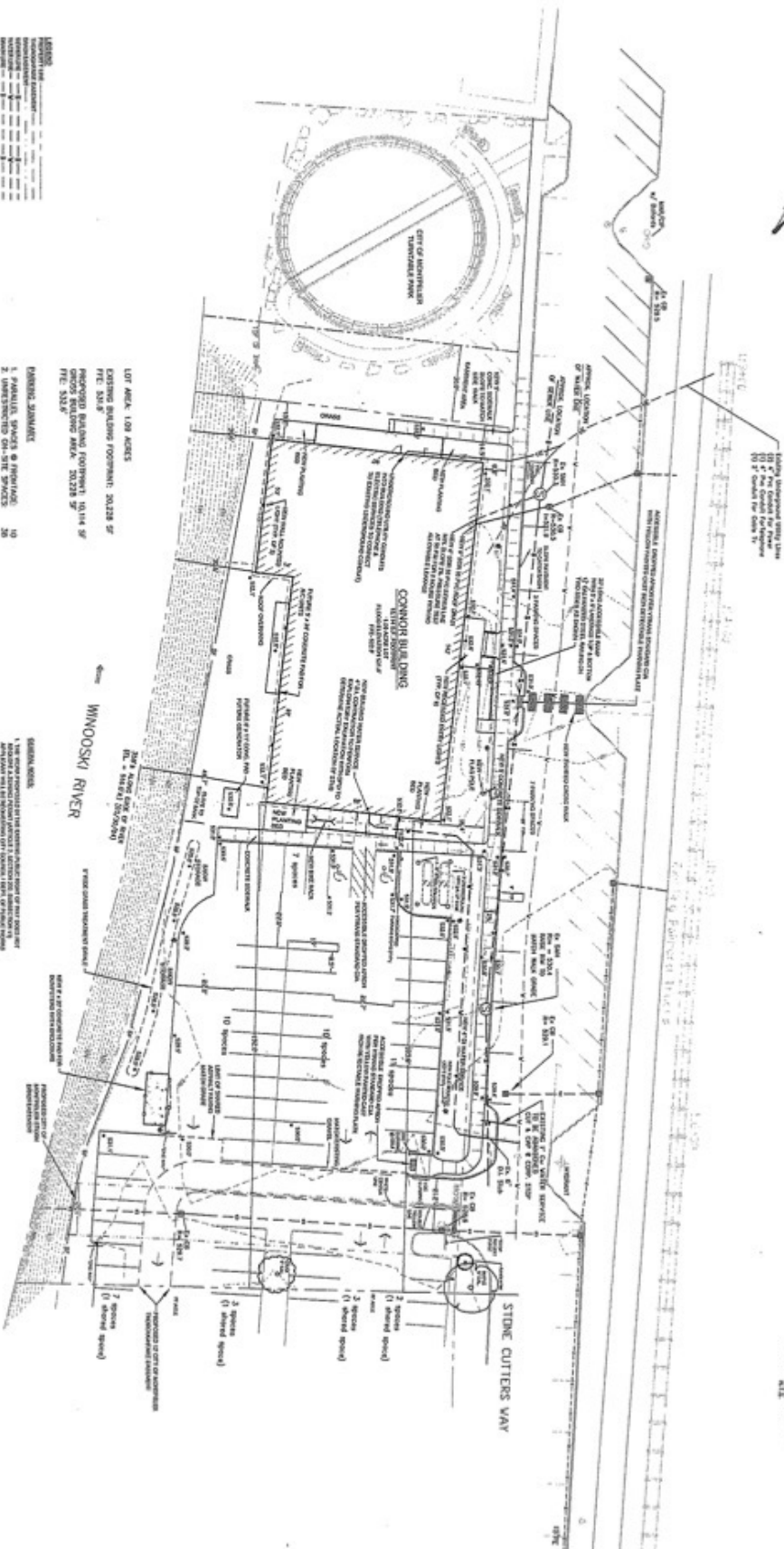
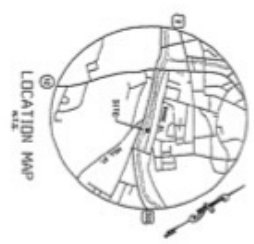
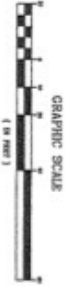




an equivalent of 10 to 15% of the total, no research would be done, no publications would be published, and no research would be done without some funding at least partly derived from industry. It is not to outsiders, however, that the current laws that encourage such behavior, but to the companies themselves, that the current laws encourage such behavior. It is not to outsiders, however, that the current laws that encourage such behavior, but to the companies themselves, that the current laws encourage such behavior.



1. SOURCE: INFORMATION PROVIDED BY REFERENCE 11.

[illegible]

CONNOR BROTHERS
STONECUTTERS, LLC
575 STONE CUTTERS WAY
MONTPELIER, VERMONT

marsh engineering services
73 Main Street Room 26
Montpelier, VT 05602
Phone: (802) 224-9033

NO	REVISIONS	DATE
1.	REVISED REFERENCE NOTE	5/26/11
2.	MISC. SIZE REVISIONS	5/24/11
3.	REVISED GRADES	5/23/11
4.	ADDED SPOT ELEVATIONS & FLOOD NOTE	5/23/11
5.	ADDED TRAFFIC MARKING & EXISTING TREES	5/24/11

