

# FOR LEASE

## MODERN MONTPELIER OFFICE SPACE WITH PARKING

1 Home Farm Way, Montpelier, VT



Beautiful turnkey office space has a modern feel with easy access and great parking. Close to the bike path. Minutes to downtown Montpelier. Easy access to Interstate 89. Please contact us today for a tour of this space.

**SIZE:**

6,600 +/- SF

**USE:**

Office

**PRICE:**

\$15/SF Gross (Includes heating allowance of \$1.50/SF)

**AVAILABLE:**

Immediately

**PARKING:**

Ample On Site

**LOCATION:**

1 Home Farm Way, Montpelier

Information contained herein is believed to be accurate, but is not warranted. This is not a legally binding offer to sell or lease.



For more information, please contact:

JOHN A. BEAL

802-864-2000

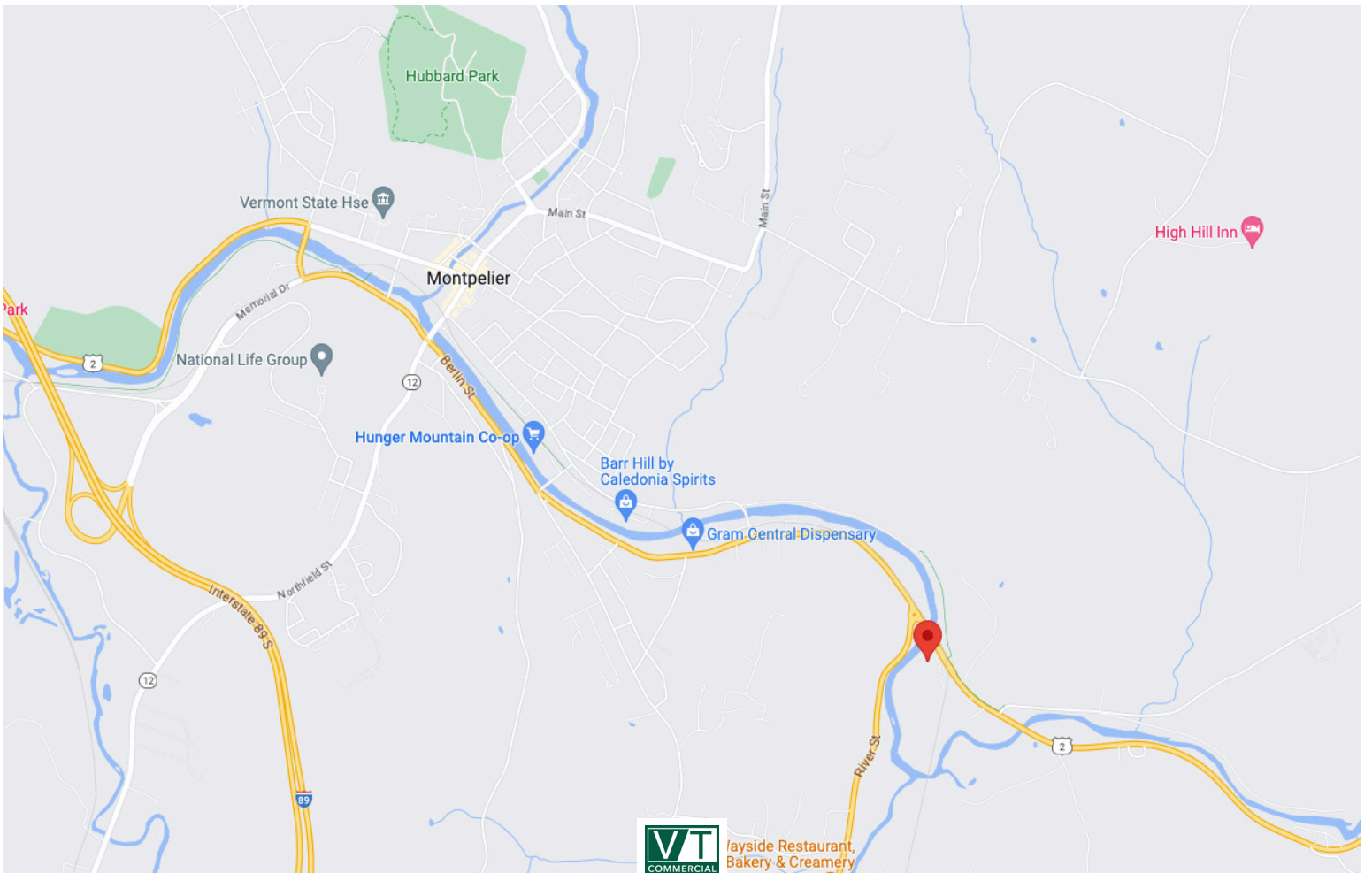
[jb@vtcommercial.com](mailto:jb@vtcommercial.com)

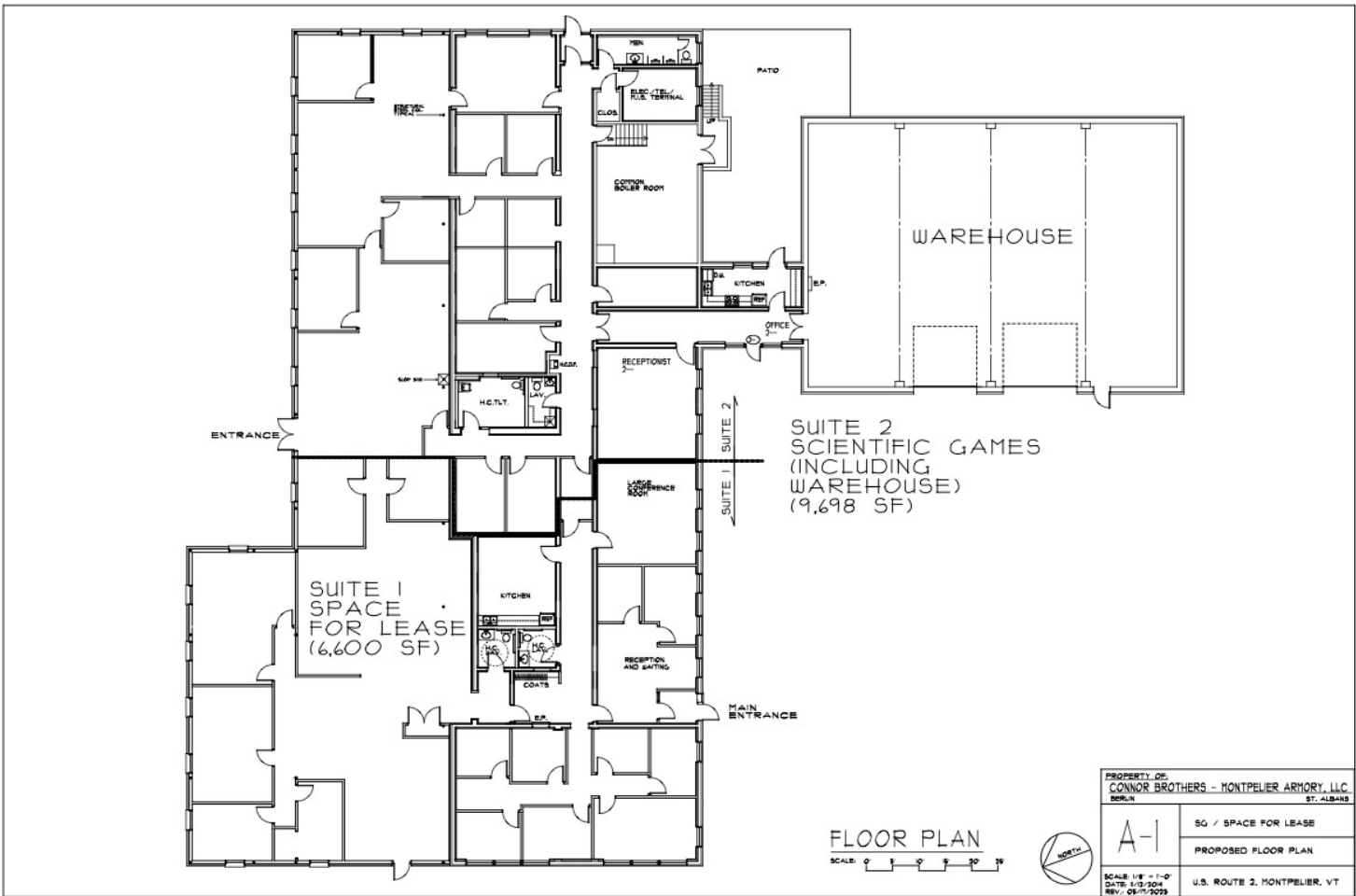
208 FLYNN AVENUE, STUDIO 2i

BURLINGTON, VT 05401

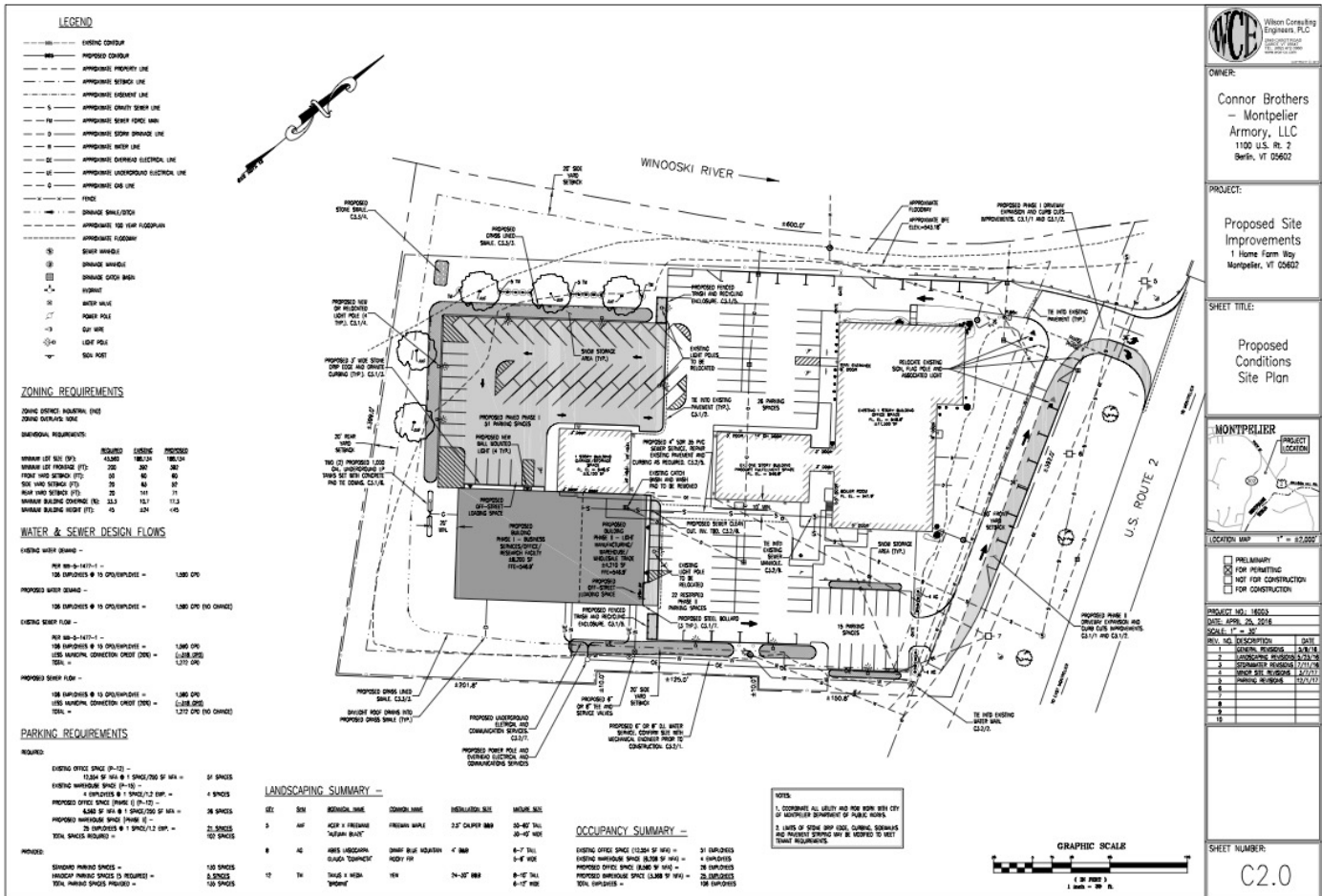
[www.vtcommercial.com](http://www.vtcommercial.com)







|   |                              |
|---|------------------------------|
| PROPERTY OF:<br><b>CONNOR BROTHERS - MONTPELIER ARMOY, LLC</b><br>DORLIN ST. ALBANY |                              |
| <b>A-1</b>  | SG / SPACE FOR LEASE         |
|   | PROPOSED FLOOR PLAN          |
|   | U.S. ROUTE 2, MONTPELIER, VT |



**Wilson Consulting Engineers, P.C.**  
1000 W. 10th St.  
Montpelier, VT 05602

**OWNER:**  
Connor Brothers - Montpelier Armory, LLC  
1100 U.S. Rt. 2  
Berlin, VT 05602

**PROJECT:**  
Proposed Site Improvements  
1 Home Farm Hwy  
Montpelier, VT 05602

**SHEET TITLE:**  
Proposed Conditions Site Plan

**MONTPELIER**

**LOCATION MAP** 1" = 15,000'

**PROJECT NO. 10002**  
DATE: 05/15/2005  
SCALE: 1" = 30'

**REV. NO. DESCRIPTION DATE**

|    |                         |          |
|----|-------------------------|----------|
| 1  | ISSUED FOR PERMITTING   | 05/15/05 |
| 2  | ISSUED FOR CONSTRUCTION | 05/15/05 |
| 3  | ISSUED FOR CONSTRUCTION | 05/15/05 |
| 4  | ISSUED FOR CONSTRUCTION | 05/15/05 |
| 5  | ISSUED FOR CONSTRUCTION | 05/15/05 |
| 6  | ISSUED FOR CONSTRUCTION | 05/15/05 |
| 7  | ISSUED FOR CONSTRUCTION | 05/15/05 |
| 8  | ISSUED FOR CONSTRUCTION | 05/15/05 |
| 9  | ISSUED FOR CONSTRUCTION | 05/15/05 |
| 10 | ISSUED FOR CONSTRUCTION | 05/15/05 |

**SHEET NUMBER:**  
C2.0

