

FOR LEASE

MEDICAL OFFICE OR SERVICE SPACE ON DORSET STREET!

372 Dorset Street, South Burlington, Vermont



The popular Dorset Street in S Burlington has an opening ! A stand alone 4320 SF single level building has come on line. Great for general office, medical office, service or even potentially retail. Offering a gracious entry with waiting area, multiple exam rooms, a lab area, admin area, physician offices and open flex areas. Two bathrooms, two entrances, great building signage opportunity and ample parking. (located next to Ann Roche Furniture)

SIZE:

4320 SF Stand alone building

PERMITTED USE:

Medical/Office/Retail

PRICE:

\$13/SF NNN (\$5.50/SF) plus utilities

AVAILABLE:

30 days

PARKING:

On site

LOCATION:

Dorset Street in South Burlington

Information contained herein is believed to be accurate, but is not warranted. This is not a legally binding offer to sell or lease.



For more information, please contact:

LINDA I LETOURNEAU

802-343-2107

linda@vtcommercial.com

208 FLYNN AVENUE, STUDIO 2i

BURLINGTON, VT 05401

www.vtcommercial.com



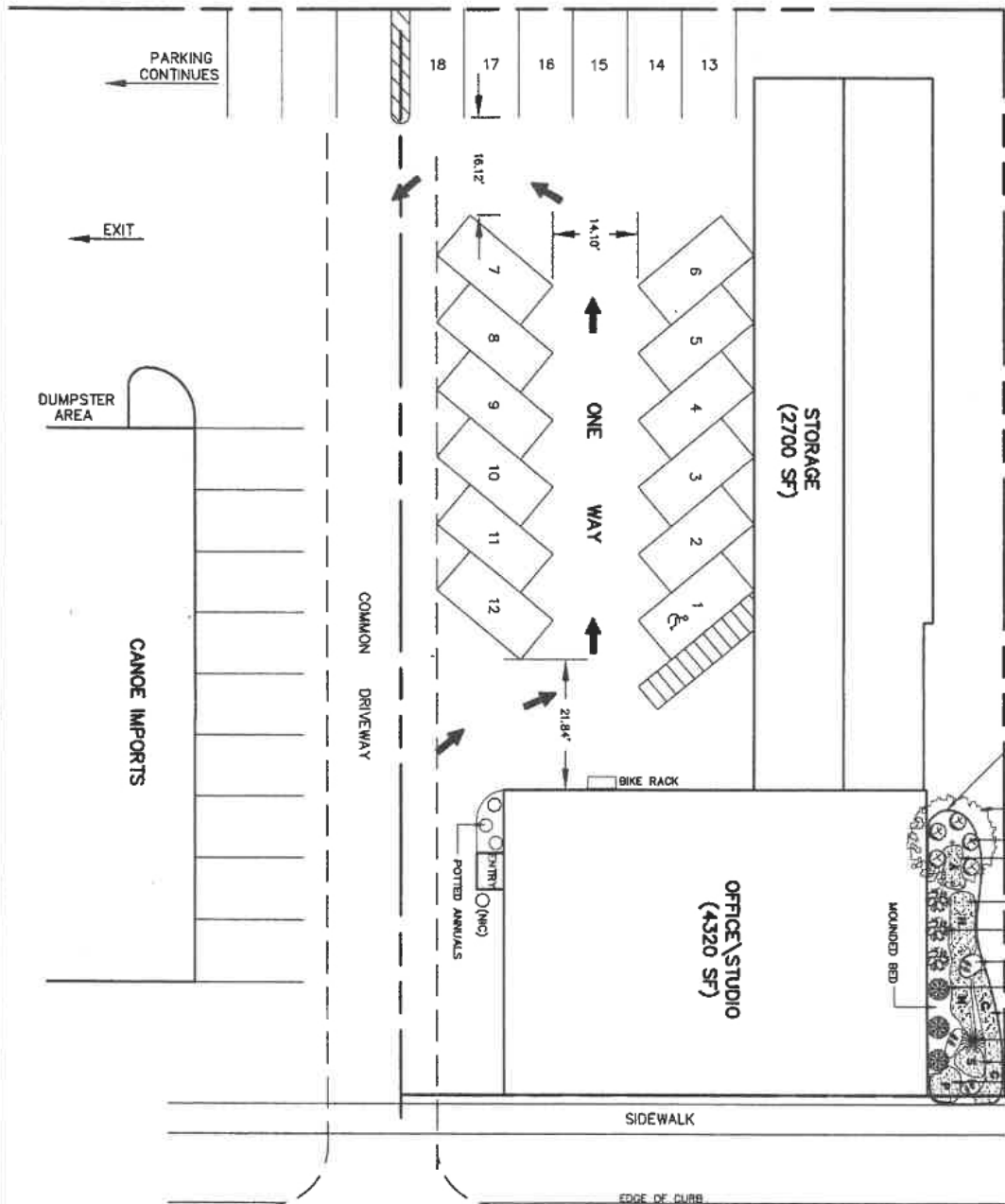








PIZZAGALLI BUILDING



NOTE: SNOW REMOVAL TO BE HAULED OFF SITE

FOR DETAILS SEE PLANS BY CREATIVE LANDSCAPING

5 VARIEGATED DOGWOOD
PRUNE EXISTING RED OAK &
CLEAR OUT AREA FOR HOUNDED
BED

ASTILBES
HOSTAS
3 DOUBLE WINGBARK CHERRY
BOULDER (TYPICAL)
3 DENSE YEW
CORONOPSIS
MUNDO PINE
SMAX
PHLOX

HOUNDED BED

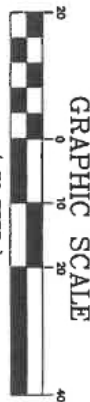
OFFICE/STUDIO (4320 SF)

STORAGE (2700 SF)

DORSET STREET

TO WILLISTON ROAD

TO KENNEDY DRIVE



DORSET COMMUNICATIONS, LLC

PARKING PLAN for 372 DORSET STREET SOUTH BURLINGTON

CHARLES GRENIER
CONSULTING ENGINEER, P.C.

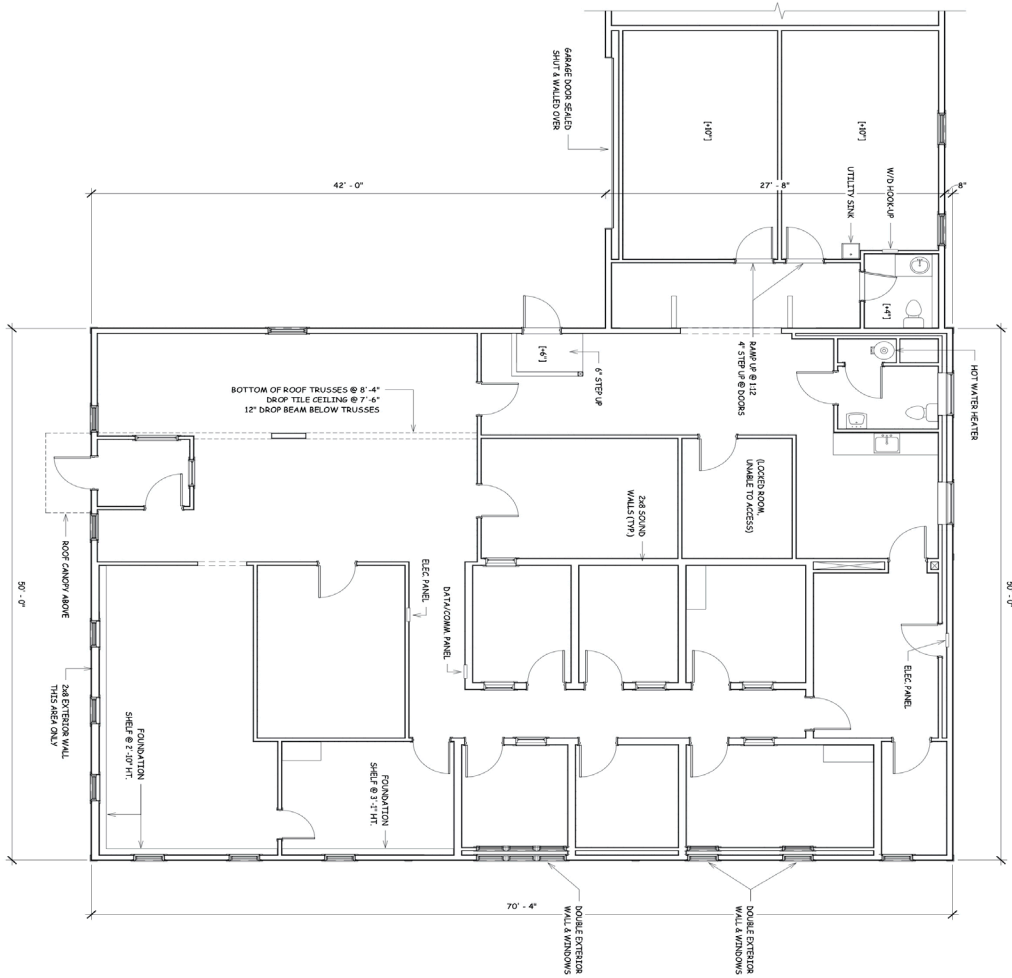
P.O. BOX 445, WATERBURY, VERMONT
(802)244-8413(Phone) (802)244-1572(Fax)



Charles Grenier

DATE ■ 8 06 04
DRN BY ■ T.J.M.
SCALE ■ 1"=20'
SHEET ■ 1 of 1
DWG NAME: SILVERBOW PARKING
FILE NO: MISC. 166





① EXISTING FLOOR PLAN
 3/16" = 1'-0"

+/- 4,298 sqft

FOR REVIEW ONLY
 NOT FOR CONSTRUCTION

A-1

EXISTING
 FLOOR PLAN

SHEET TITLE
 SCALE: 3/16" = 1'-0"
 DATE: 6/2/2021
 DRAWN BY: WSI
 CHECKED BY: GA
 PROJECT: 372 DRST.

372 DORSET STREET
 JOE HANDY
 SOUTH BURLINGTON, VERMONT


 G4 Design Studios
 77 College Street, Ste. 2A Burlington, VT 05401
 (P)802-497-0955 (F)802-861-3110 G4design@studios.com

THIS DRAWING IS THE
 PROPERTY OF G4 DESIGN
 STUDIOS, LLC AND IS NOT TO
 BE COPIED, REPRODUCED, OR
 THE CONTENT THEREOF USED,
 IN WHOLE OR IN PART,
 WITHOUT THE PRIOR WRITTEN
 CONSENT OF STEVE GUILD

