

# FOR LEASE

## LOTS OF SINGLE OFFICES

125 College Street, Third Floor, Burlington, VT



VT Commercial is pleased to offer this office space. Layout consist of 15 single offices, a group therapy room and kitchenette. Exposed brick, tall windows and some with views to the lake. First floor of this building offers a coffee shop for your convenience.

**SIZE:**

4,428 SF +/-

**ZONING:**

Office

**PRICE:**

\$4,000/mo plus utilities

**AVAILABLE:**

Immediately

**PARKING:**

On your own, city lot

**LOCATION:**

Downtown Burlington

Information contained herein is believed to be accurate, but is not warranted. This is not a legally binding offer to sell or lease.



For more information, please contact:

LINDA I LETOURNEAU

802-343-2107

[linda@vtcommercial.com](mailto:linda@vtcommercial.com)

208 FLYNN AVENUE, STUDIO 2i

BURLINGTON, VT 05401

[www.vtcommercial.com](http://www.vtcommercial.com)



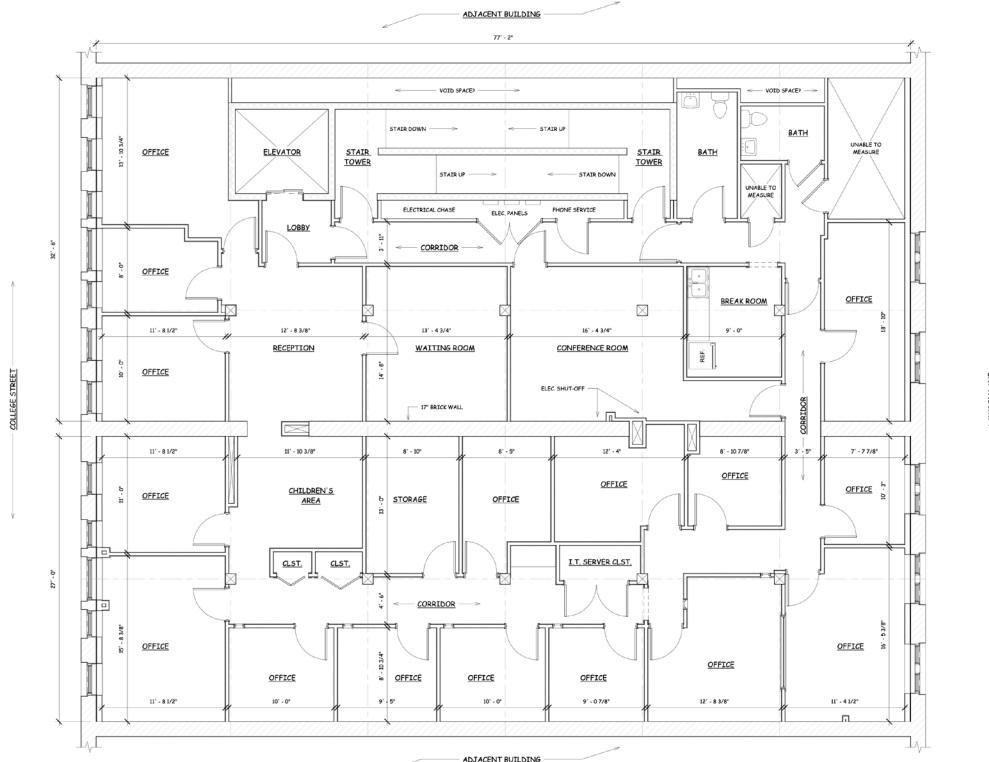












1. EXISTING THIRD FLOOR PLAN  
1/4" = 1'-0"

+/- 4,428 sqft

NOTES:  
ALL EXISTING DIMENSIONS ARE +/-  
UNLESS NOTED OTHERWISE

FOR REVIEW ONLY  
NOT FOR CONSTRUCTION

THIS DRAWING IS THE  
PROPERTY OF A DESIGN  
STUDIO, LLC AND IS NOT TO  
BE COPIED, REPRODUCED, OR  
THE CONTENT THEREOF USED,  
IN WHOLE OR IN PART,  
WITHOUT THE WRITTEN  
CONSENT OF STEVE GUILD



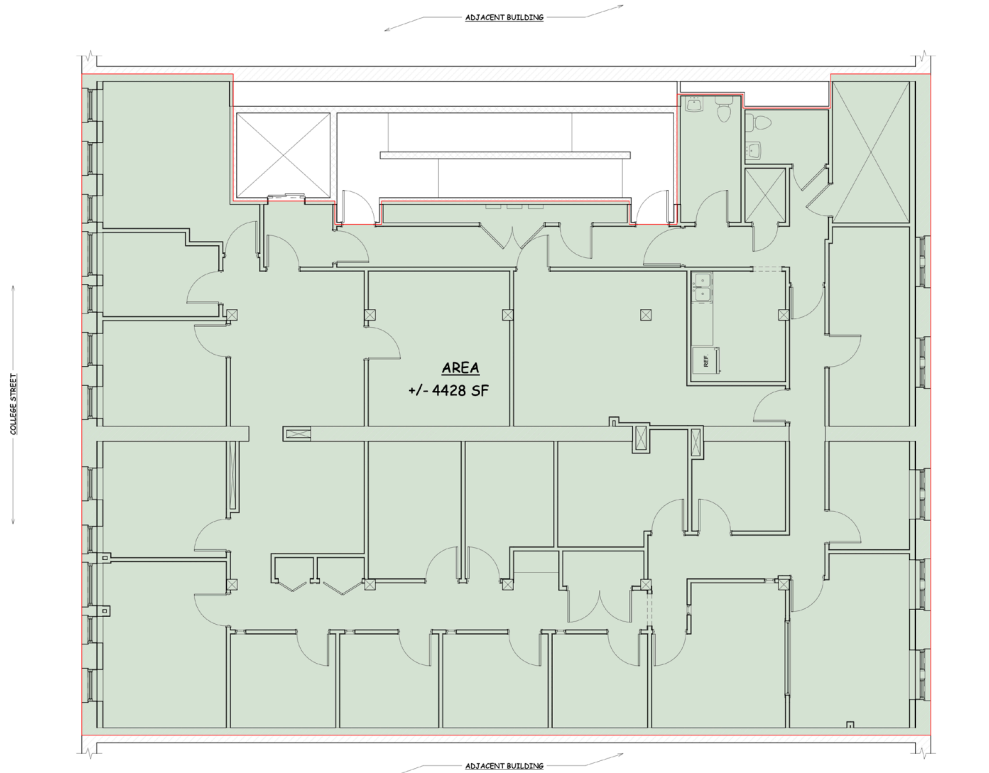
WELLS-RICHARDSON BLOCK  
125 COLLEGE STREET  
BURLINGTON, VERMONT

SCALE: 1/4" = 1'-0"  
DATE: 2/17/2022  
DRAWN BY: WGE  
CHECKED BY: SCG  
PROJECT: 125 CLLE

SHEET TITLE:  
EXISTING  
THIRD  
FLOOR PLAN

A-1

2/17/2022 11:47 AM



1. EXISTING THIRD FLOOR AREA PLAN  
1/4" = 1'-0"

FOR REVIEW ONLY  
NOT FOR CONSTRUCTION

THIS DRAWING IS THE  
PROPERTY OF A DESIGN  
STUDIO, LLC AND IS NOT TO  
BE COPIED, REPRODUCED, OR  
THE CONTENT THEREOF USED,  
IN WHOLE OR IN PART,  
WITHOUT THE WRITTEN  
CONSENT OF STEVE GUILD



WELLS-RICHARDSON BLOCK  
125 COLLEGE STREET  
BURLINGTON, VERMONT

SCALE: 1/4" = 1'-0"  
DATE: 2/17/2022  
DRAWN BY: WGE  
CHECKED BY: SCG  
PROJECT: 125 CLLE

SHEET TITLE:  
EXISTING  
3RD FLOOR  
AREA PLAN

A-2

2/17/2022 11:47 AM

