

FOR SUBLEASE

CHACE MILL SUBLEASE!

1 Mill Street, Suite 190 & 290, Burlington, VT



VT Commercial is pleased to offer this sublease space (Tenth Crow) at the Chace Mill in Burlington. Space offers a nice layout of open space as well as private offices (some with views of the river). Kitchenette, open conference room environment and dedicated exterior door so you will be easy to find at the Mill property. Split level space each floor with its own bathroom. This suite boast of old mill ambiance with scalloped brick ceilings, exposed columns & beams. On site parking included in the rent, directory signage and flexible terms. Current lease through 10/31/2023. Easy to find location; Chace Mill offers an on site Cafe in the Main building; Surface lot parking just outside the suite; Suite is located at the back of the property along the river. Disclosing... jet noise, roaring or gentle river noise, and fun environment.

SIZE:

3,478 SF +/-

ZONING:

Office

PRICE:

\$12/SF NN (\$4.78/SF NNN plus gas and electric)

AVAILABLE:

Immediately

PARKING:

On site

LOCATION:

1 Mill Street, Burlington

Information contained herein is believed to be accurate, but is not warranted. This is not a legally binding offer to sell or lease.



For more information, please contact:

LINDA I LETOURNEAU

802-343-2107

linda@vtcommercial.com

208 FLYNN AVENUE, STUDIO 2i

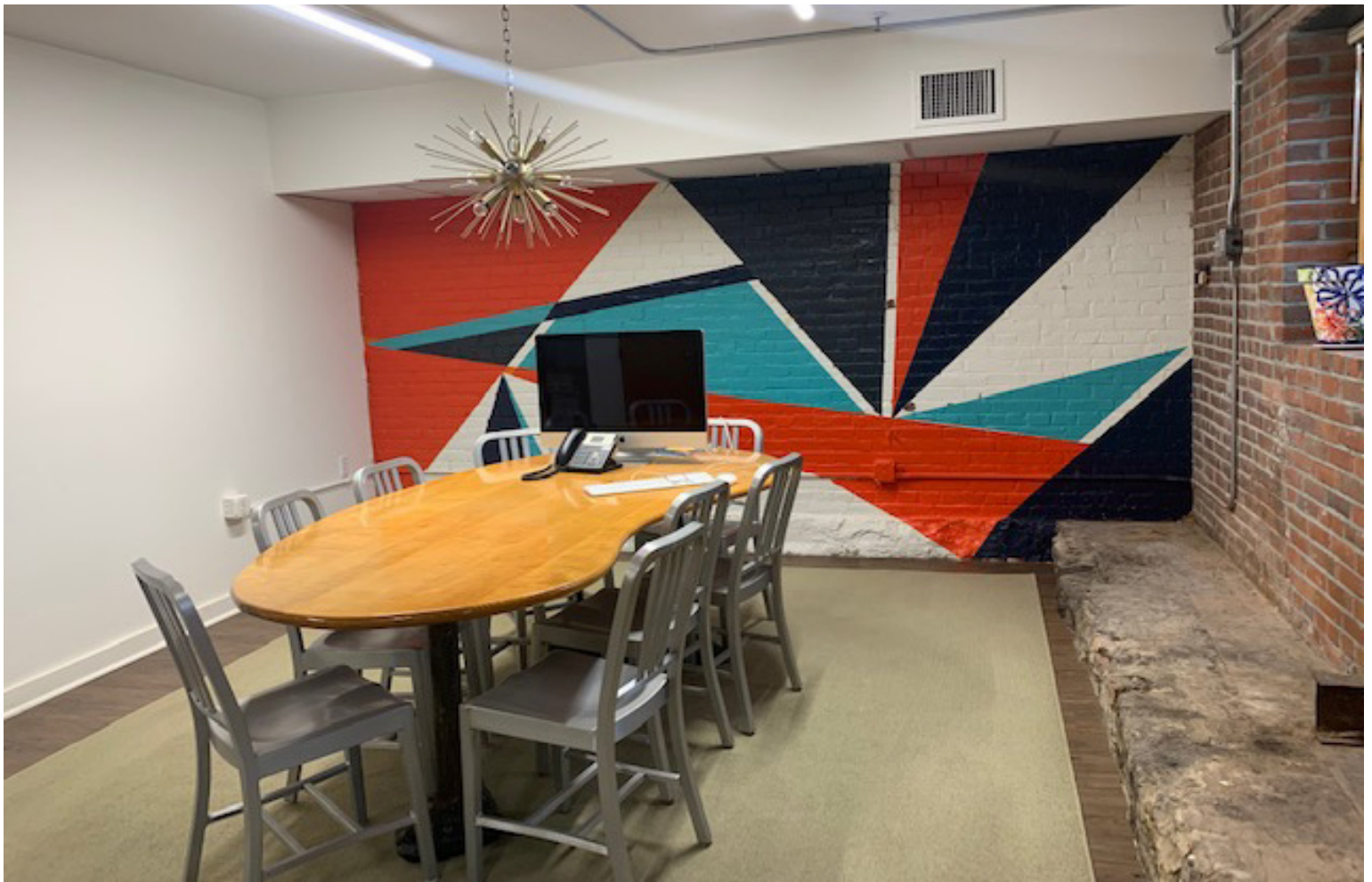
BURLINGTON, VT 05401

www.vtcommercial.com





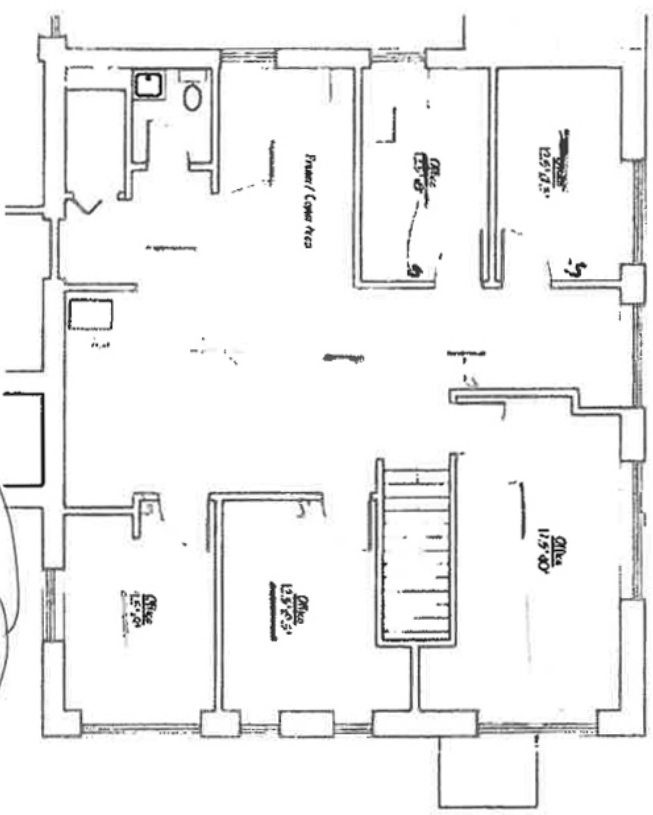








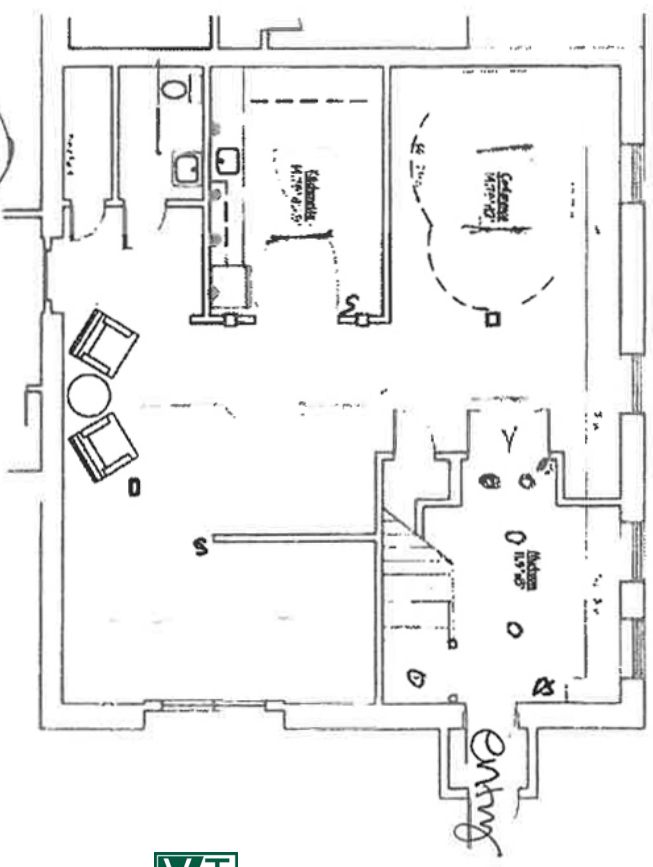
2. Second Floor Plan



2nd Flr

Scale: 1/8" = 1'-0"

1. First Floor Plan



1st

Scale: 1/8" = 1'-0"

Chase Mill #190 & 290
1 Mill Street Burlington VT