

# FOR LEASE

## MALTEX BUILDING

431 Pine Street, Suite G15, Burlington, VT



The popular Maltex Building on Pine Street in the South end has a small suite coming on line in May. Three rooms and a kitchenette at the entrance. No natural light in this unit. Exposed brick and carpet flooring. Easy to find location.

**SIZE:**

833 SF

**ZONING:**

Enterprise Zone

**PRICE:**

\$13/SF NNN (\$6.27/SF) plus gas & electric

**AVAILABLE:**

May 2022

**PARKING:**

On Site

**LOCATION:**

Burlington South End

Information contained herein is believed to be accurate, but is not warranted. This is not a legally binding offer to sell or lease.



For more information, please contact:

LINDA | LETOURNEAU | YVES BRADLEY

802-343-2107 | 802-363-5696

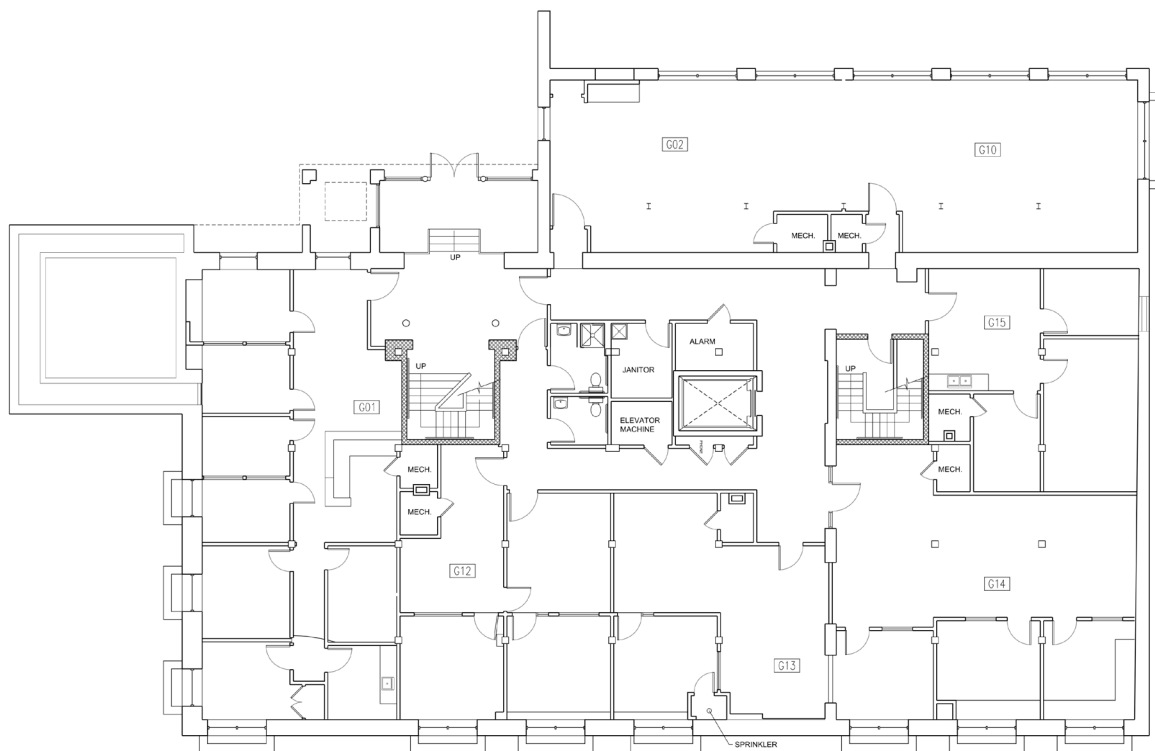
[linda@vtcommercial.com](mailto:linda@vtcommercial.com) | [yb@vtcommercial.com](mailto:yb@vtcommercial.com)

208 FLYNN AVENUE, STUDIO 2i

BURLINGTON, VT 05401

[www.vtcommercial.com](http://www.vtcommercial.com)





10 GROUND LEVEL PLAN

Scale: 3/16" = 1'-0"



Smith Buckley Architects  
 100 Main Street, Burlington, Vermont 05401  
 (802) 248-0033  
 sbavt.com  
 DRAWN BY: SBA/STP ARCHITECTS P.L.L.C. - AL REYNOLDS  
 CHECKED BY: SBA/STP ARCHITECTS P.L.L.C. - AL REYNOLDS

**MALTEX  
 BUILDING**  
 431 Pine Street, Burlington, VT 05401

REV. NUMBER DATE DESCRIPTION

NOT FOR  
 CONSTRUCTION OR  
 PERMIT

FLOOR PLAN

SCALE: AS NOTED  
 DATE: December 29, 2020

