

# FOR LEASE

## SOUTH END OFFICE SPACE

431 Pine Street, Suites G02 and G10, Burlington, VT



The popular Maltex building has an opening in May. A west facing ground level space with windows! A wide open floor plan currently with exposed brick & stone walls. The Maltex offers onsite parking, easy to find location and coffee and sandwiches across the street. Adjacent space G15 offers a kitchenette and three rooms. This unit has been rented with G02 & G10 in the past to serve as the step away space.

**SIZE:**

Two suites of 987 SF for a total of 1,974 SF

**ZONING:**

Enterprise Zone

**PRICE:**

\$13/SF NNN (\$6.09/SF) plus gas & electric

**AVAILABLE:**

May 2022

**PARKING:**

On Site

**LOCATION:**

Burlington South End

Information contained herein is believed to be accurate, but is not warranted. This is not a legally binding offer to sell or lease.



For more information, please contact:

LINDA | LETOURNEAU | YVES BRADLEY

802-343-2107 | 802-363-5696

[linda@vtcommercial.com](mailto:linda@vtcommercial.com) | [yb@vtcommercial.com](mailto:yb@vtcommercial.com)

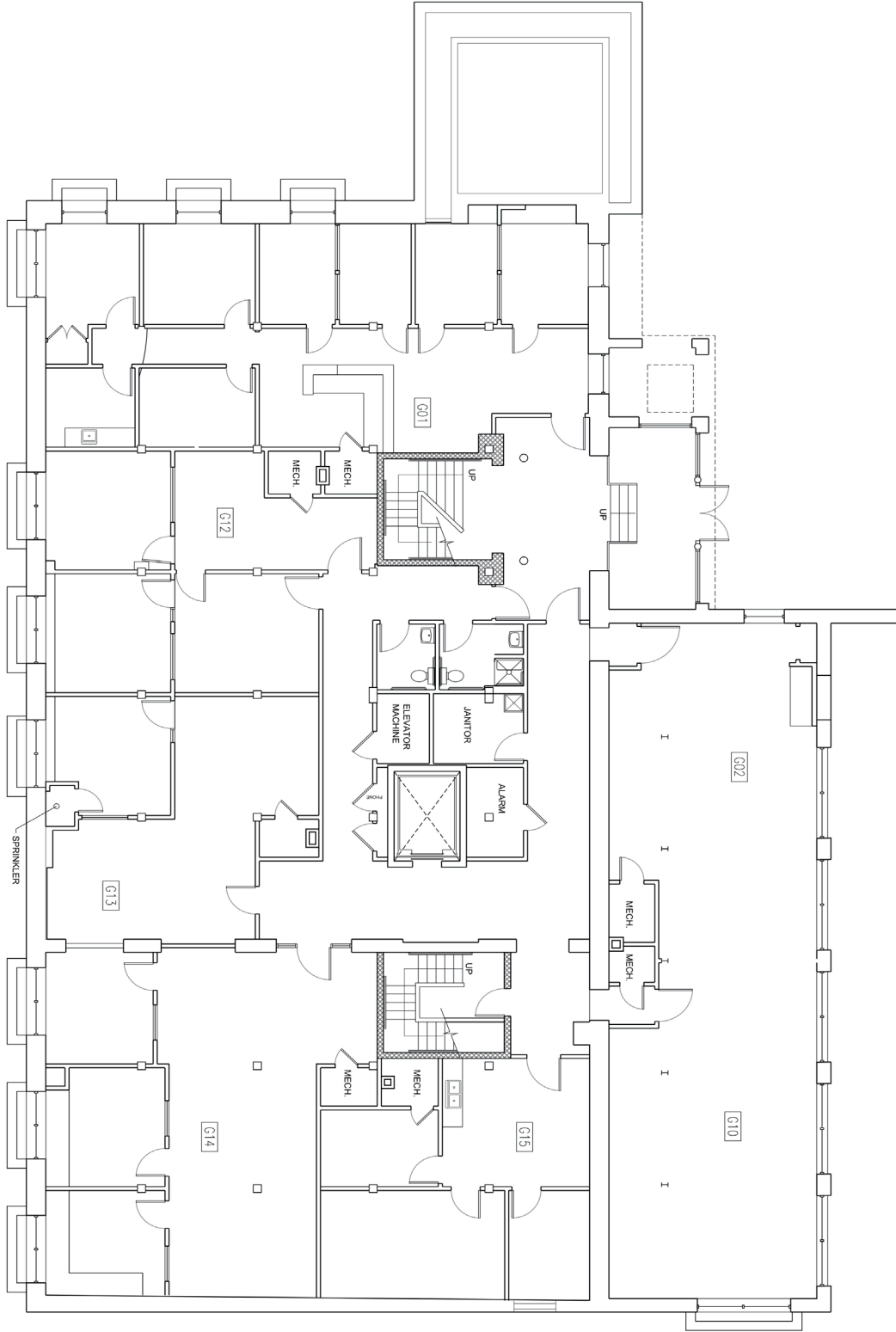
208 FLYNN AVENUE, STUDIO 2i

BURLINGTON, VT 05401

[www.vtcommercial.com](http://www.vtcommercial.com)



10 GROUND LEVEL PLAN



Scale: 3/16" = 1'-0"

0

SCALE: AS NOTED  
DATE: December 29, 2020

FLOOR PLAN

NOT FOR  
CONSTRUCTION OR  
PERMIT

REV. NUMBER DATE DESCRIPTION

# MALTEX BUILDING

431 Pine Street, Burlington, VT 05401



Smith Buckley Architects  
431 Pine Street, Burlington, Vermont 05401  
(802) 540-0323  
**sbavt.com**  
COPYRIGHT © 2017  
SMITH / BUCKLEY ARCHITECTS PLLC. ALL RIGHTS  
RESERVED.