

FOR LEASE

CLASS A OFFICE SPACE

312 Hurricane Lane, Williston, VT



Two story building with elevator. Lots of windows, great views, easy to find property right off Exit 12.

SIZE:

Up to 37,000 SF +/-

ZONING:

Office

PRICE:

\$12.00/sf NNN, \$7.32/sf CAM includes gas and electric

AVAILABLE:

Immediately

PARKING:

On-site

LOCATION:

I-89, Exit 12

Information contained herein is believed to be accurate, but is not warranted. This is not a legally binding offer to sell or lease.



For more information, please contact:

LINDA I. LETOURNEAU / JOHN BEAL

802-343-2107 / 802-598-1168

linda@vtcommercial.com / jb@vtcommercial.com

208 FLYNN AVENUE, STUDIO 2i

BURLINGTON, VT 05401

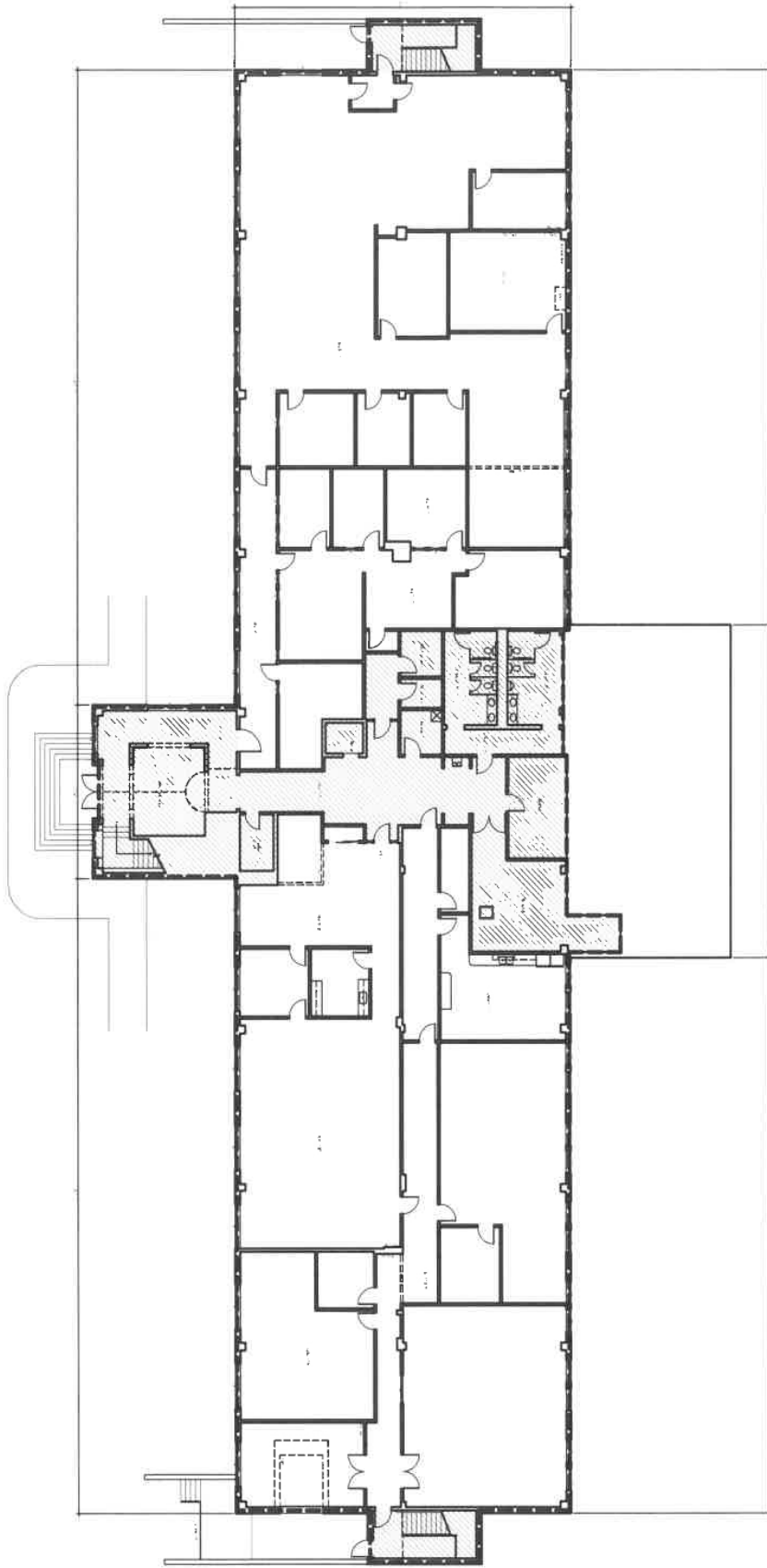
www.vtcommercial.com











First Floor

Scale: Not to Scale

A-1.1

Ground Floor



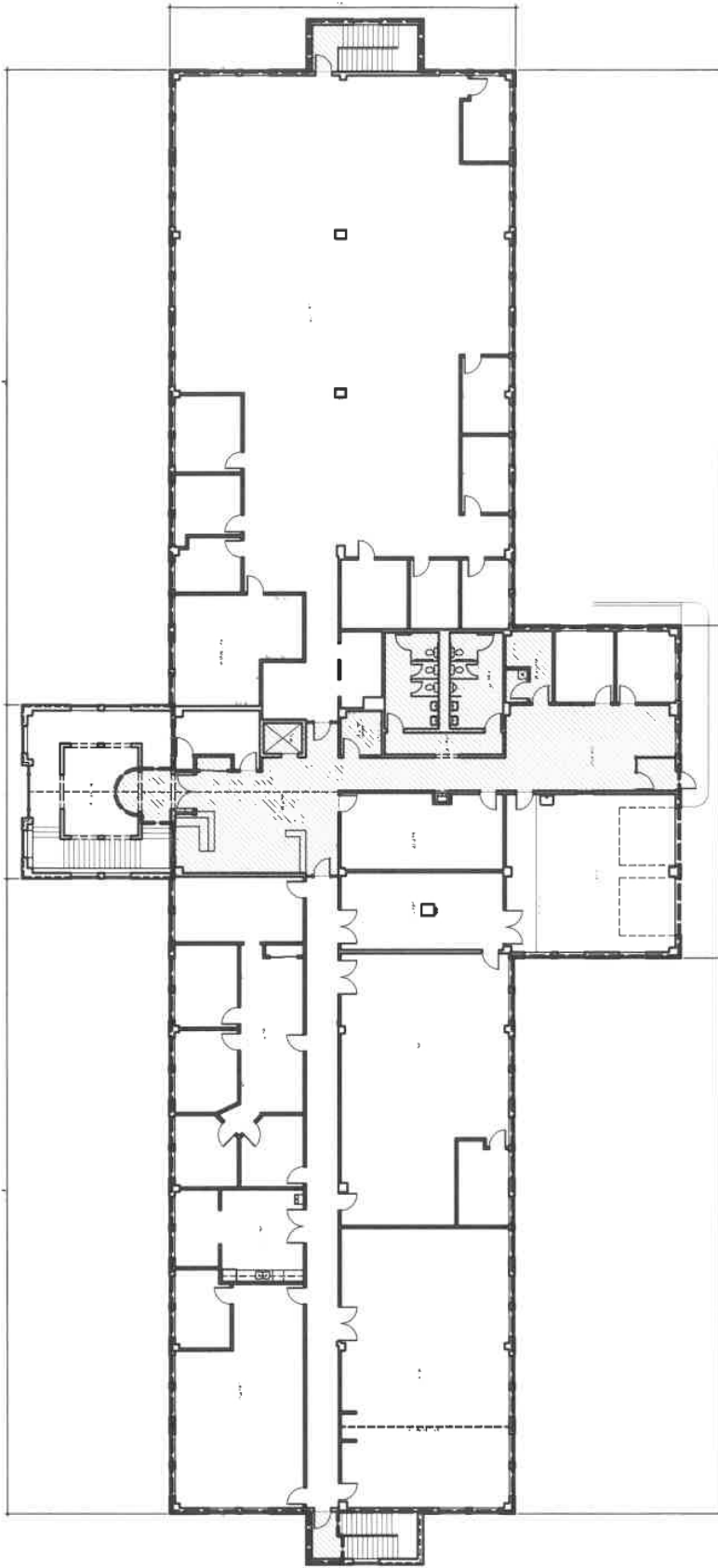
HILLSIDE PROPERTIES

312 Hurricane Lane
RAMSAY GOURD ARCHITECTS
 7190 Main Street • Manchester Center, VT

Williston, Vermont
 (802) 362-1480 • FAX (802) 362-0179

Drawn by: PJK
 Date: 25 JAN 2022





Upper Level

Scale: Not to Scale

A-1.2

Second Floor



HILLSIDE PROPERTIES
 312 Hurricane Lane
RAMSAY GOURD ARCHITECTS
 7190 Main Street • Manchester Center, VT
 Williston, Vermont
 (802) 362-1480 • FAX (802) 362-0179

Drawn By: TRK
 Date: 26 JAN 2022

