

FOR LEASE

CLASS A OFFICE SPACE

312 Hurricane Lane, Williston, VT



Entire building for lease in January! Two story building with elevator. Lots of windows, great views, easy to find property right off Exit 12.

SIZE:

Up to 37,000 SF +/-

ZONING:

Office

PRICE:

\$12.00/sf NNN, \$6.65/sf CAM includes gas and electric

AVAILABLE:

Immediately

PARKING:

On-site

LOCATION:

I-89, Exit 12

Information contained herein is believed to be accurate, but is not warranted. This is not a legally binding offer to sell or lease.



For more information, please contact:

LINDA I. LETOURNEAU / JOHN BEAL

802-343-2107 / 802-598-1168

linda@vtcommercial.com / jb@vtcommercial.com

208 FLYNN AVENUE, STUDIO 2i

BURLINGTON, VT 05401

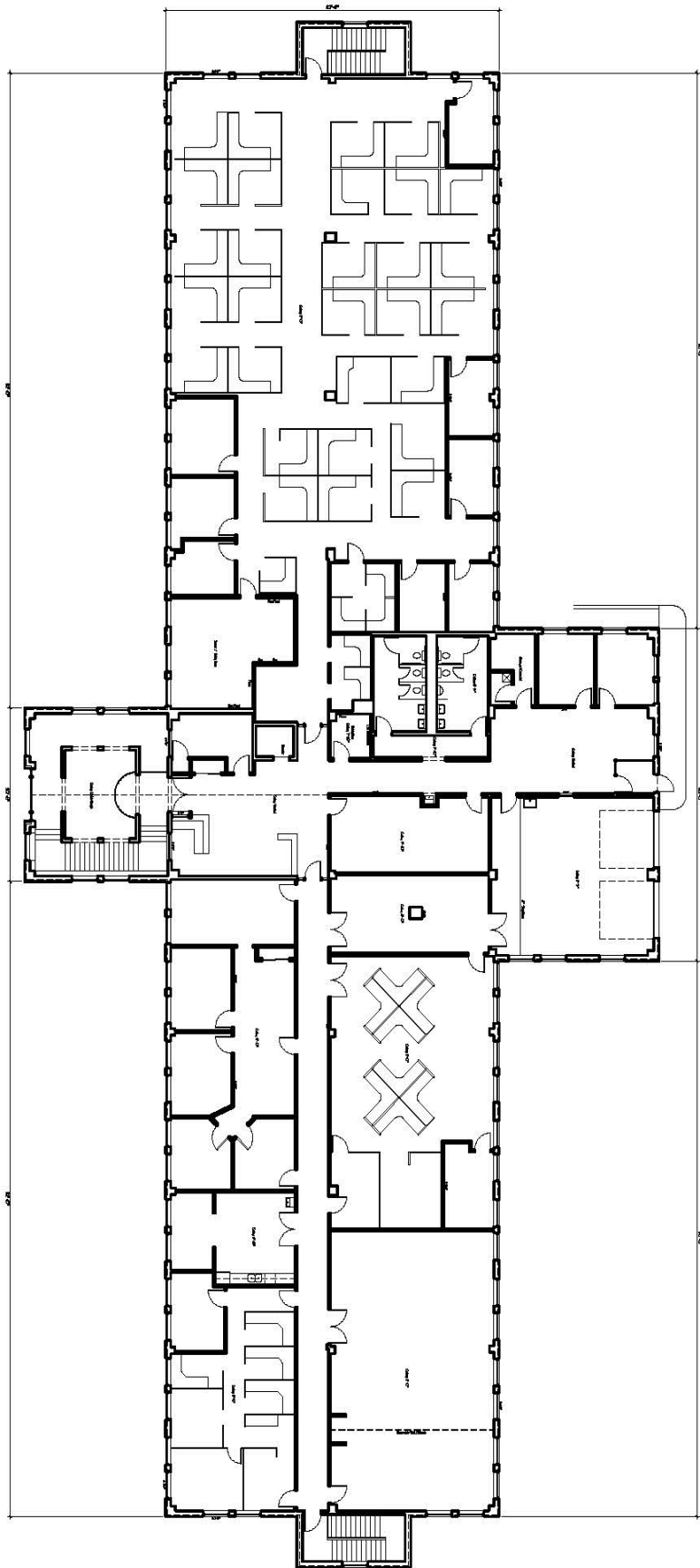
www.vtcommercial.com











Scale: Not to Scale

A-1.2

Second Floor

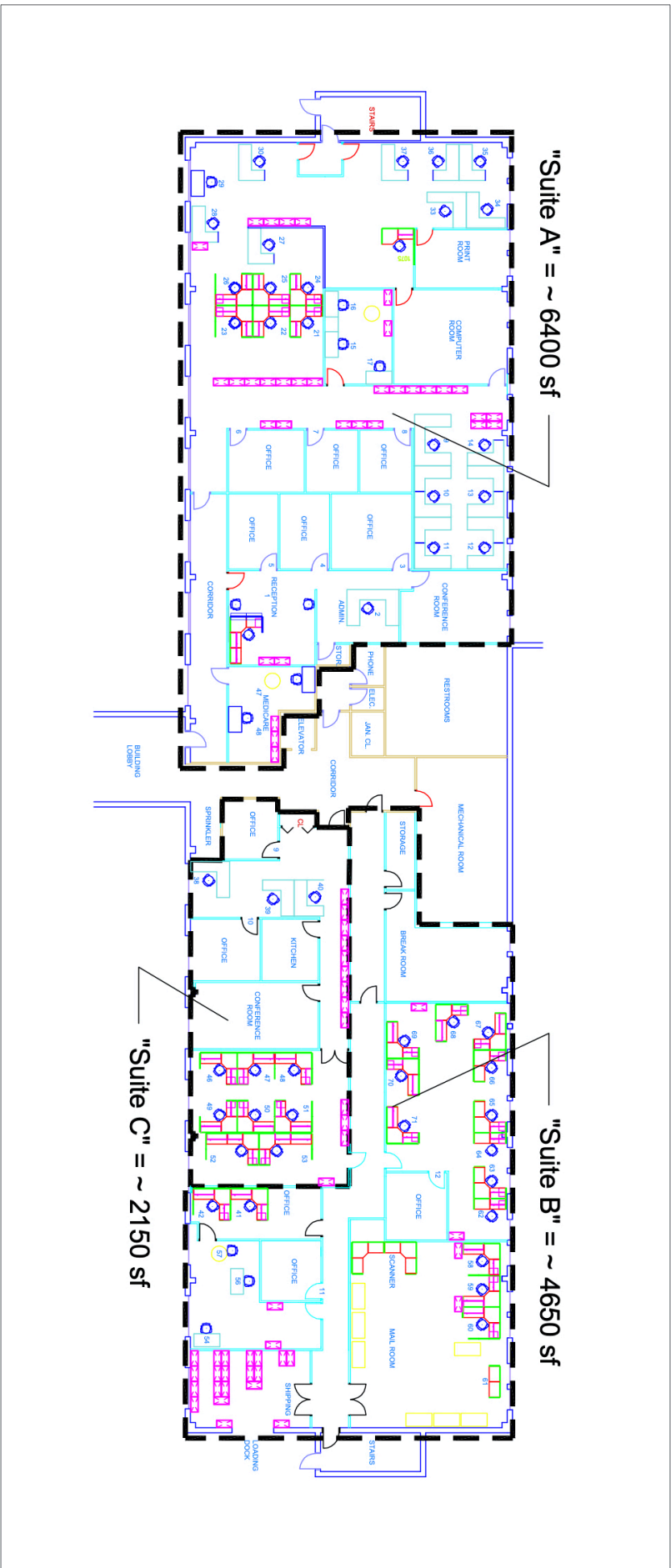


HILLSIDE PROPERTIES
 312 Eurricome Lane
RAMSAY GOURD ARCHITECTS
 7190 Main Street • Manchester Center, VT

Williston, Vermont
 (802) 362-1480 • FAX (802) 362-0179



Drawn By: JMK
 Date: 11/08/2018



EDS, an HP Company - Williston, VT (VTW01)
Floor Plan

Scale: 1" = 20' 2 SEPT 09

