

# FOR LEASE

## CONVENIENT LOCATION!

372 Hurricane Lane, Suite 101, Williston, VT



VT Commercial is pleased to offer this conveniently located property just off of Interstate 89 at Exit 12. Offering an efficient layout and affordable pricing. Complete with four offices, small conference room, large conference room, storage/IT room and open area. Currently the space of VT Lung Association. On site parking, signage and nice environment for noon time walks and quick 2-3 minute ride to grab lunch at Taft Corners.

**SIZE:**

2,025 SF

**USE:**

Office

**PRICE:**

\$11/SF NNN (\$3.27 CAM) plus Gas & Electric

**AVAILABLE:**

July 1st, 2021

**PARKING:**

On Site

**LOCATION:**

Near Taft Corners - Williston, VT

Information contained herein is believed to be accurate, but is not warranted. This is not a legally binding offer to sell or lease.



For more information, please contact:

JOHN A. BEAL / LINDA I. LETOURNEAU

802-598-1168 / 802-343-2107

[jb@vtcommercial.com](mailto:jb@vtcommercial.com) / [linda@vtcommercial.com](mailto:linda@vtcommercial.com)

208 FLYNN AVENUE, STUDIO 2i

BURLINGTON, VT 05401

[www.vtcommercial.com](http://www.vtcommercial.com)







380



HURRICANE LANE

LOWER LEVEL

SUITE 101 VT. DIVISION of FIRE SAFETY

SUITE 102

UPPER LEVEL

SUITE 201 SUI INTERNATIONAL

LOFT

SUITE 301 HILLSIDE PROPERTIES

372



HURRICANE LANE

LOWER LEVEL

SUITE 101 AMERICAN LUNG ASSOC. OF VT.

SUITE 102

UPPER LEVEL

SUITE 201

SUITE 202









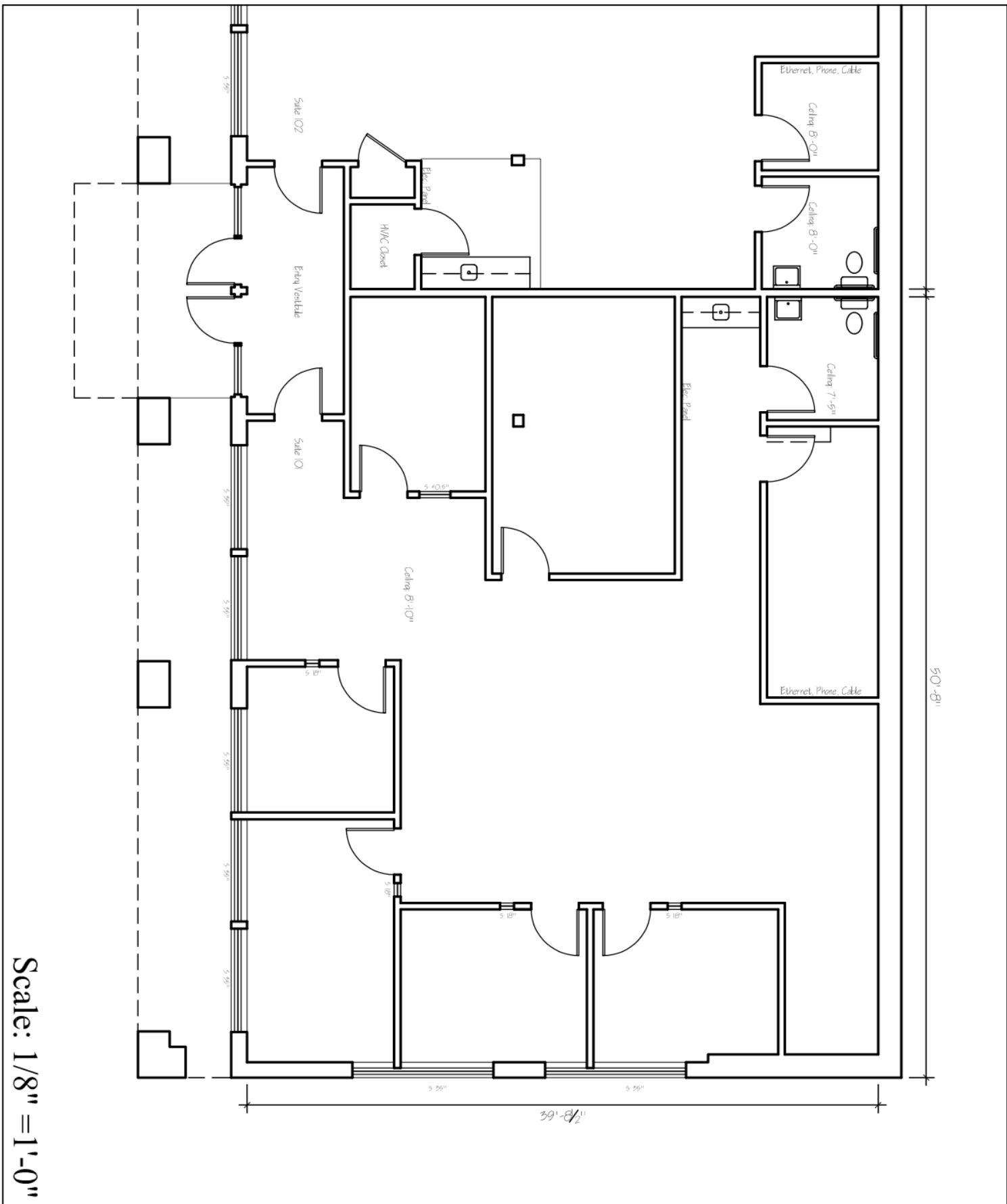












Scale: 1/8" = 1'-0"

**A-1.1**  
 Suite 101

**HILLSIDE PROPERTIES**  
 372 Hurricane Lane Williston, Vermont  
**RAMSAY GOURD ARCHITECTS**  
 7190 Main Street • Manchester Center, VT (802) 362-1480 • FAX (802) 362-0179

Drawn By: PRK  
 Date: 20 APR 2021

