

# FOR LEASE

## BLUE MALL RETAIL - SOUTH BURLINGTON

150 Dorset Street, South Burlington, VT



Popular strip center with high profile location across from the 600,000 SF University Mall. Convenient Central Location, 1/4 mile from I-89, Exit 14. 200+ parking spaces. Traffic Count – 30,000 + ADT. Tenants Include: Clay's Pure Barre, UPS Store, Presto Music, Bueno Y Sano, Dave's Cosmic Subs.

**SIZE:**

1,031 SF

**ZONING:**

Retail, restaurant, office, medical

**PRICE:**

\$18.00/SF, NNN (\$6.85/SF)

**AVAILABLE:**

Immediately

**PARKING:**

Ample on-site

**LOCATION:**

Blue Mall - South Burlington

Information contained herein is believed to be accurate, but is not warranted. This is not a legally binding offer to sell or lease.



For more information, please contact:

YVES E BRADLEY

802-363-5696

yb@vtcommercial.com

208 FLYNN AVENUE, STUDIO 2i

BURLINGTON, VT 05401

www.vtcommercial.com



*The* **BLUE MALL**  
**OUTBACK STEAKHOUSE**

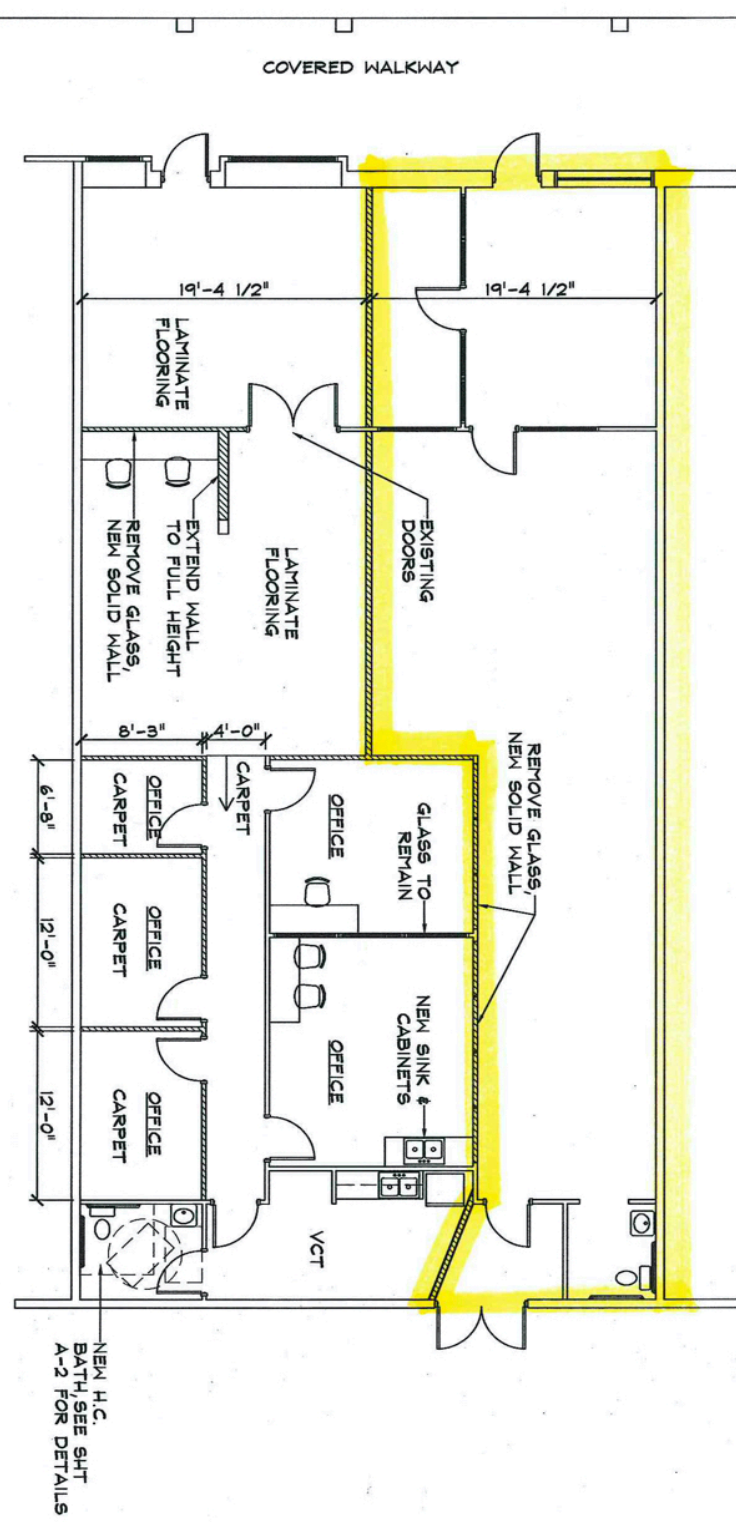
**150 DORSET STREET**

- |                                |                                 |
|--------------------------------|---------------------------------|
| <b>BIG LEAGUE HAIR CUTTERS</b> | <b>REPLAYS</b>                  |
| <b>BIG PICTURE FRAMING</b>     | <b>SALLY BEAUTY SUPPLY</b>      |
| <b>CHAMPLAIN DENTAL</b>        | <b>SEWLY TAILORING</b>          |
| <b>ONE MAIN FINANCIAL</b>      | <b>SNOWFLAKE CHOCOLATES</b>     |
| <b>CLAY'S</b>                  | <b>SPORTSHOE CENTER</b>         |
| <b>COSMOS HAIR ASSOC.</b>      | <b>SYLVAN LEARNING</b>          |
| <b>MATTRESSES, ETC.</b>        | <b>TROPICAL NAILS &amp; TAN</b> |
| <b>PLAY IT AGAIN SPORTS</b>    | <b>THE UPS STORE</b>            |
|                                | <b>WINGS OVER BURLINGTON</b>    |
|                                |                                 |
|                                |                                 |





**NEW FLOOR PLAN**  
 SCALE: 1/8" = 1'-0"



NEW H.C. BATH, SEE SHIT A-2 FOR DETAILS

**OR MARTELLI'S OFFICE**  
 BLUE MALL  
 SOUTH BURLINGTON, VERMONT

NO.	DATE	REVISION

**G4 Design Studios**  
 77 College Street, Ste. 216 Burlington, VT 05401  
 Phone: 802-255-1100 Fax: 802-255-1102 [www.G4DesignStudios.com](http://www.G4DesignStudios.com)

SCALE: 1/8" = 1'-0"  
 DATE: JAN 2008  
 DRAWN BY: [blank]  
 CHECKED BY: [blank]  
 PROJECT TITLE:  
 SHEET TITLE:  
 DRAWING NO. **A-1**



