

EXCLUSIVELY FOR LEASE

COOL OFFICE/FLEX IN THE HEART OF THE SOUTH END!

28 Howard Street, Burlington, VT



Here's your chance to grab space on the 1st or 3rd floor of beautiful, state of the art office/flex space in Burlington's extremely popular south end. These spaces include operable windows, tons of light, underground parking, secured bike parking, and a great mix of other tenants. Walking distance to popular eateries, coffee shops, the Burlington bike path, bus stops, and other retail stores. Future development plans bring the Champlain Parkway down Pine street, adding to this already desirable location. Neighboring businesses include Dealer.com, Dedalus Wine, Great Harvest Bread, Speeder and Earl's Coffee Roasters, Arts Riot, Burlington City Arts, and many more... Please inquire today for a tour of the building and property. Suite 101: 2,898 +/- SF; Suite 304: 2,000 +/- SF

SIZE:

2,200 - 3,000 +/- SF

PERMITTED USE:

Office / Flex

PRICE:

\$15-18/ft NNN (estimated at \$3.26) plus share of electric and gas.

AVAILABLE:

Immediately

PARKING:

Underground Garage

LOCATION:

Burlington's South End

Information contained herein is believed to be accurate, but is not warranted. This is not a legally binding offer to sell or lease.



For more information, please contact:

JOHN BEAL

802-598-1168

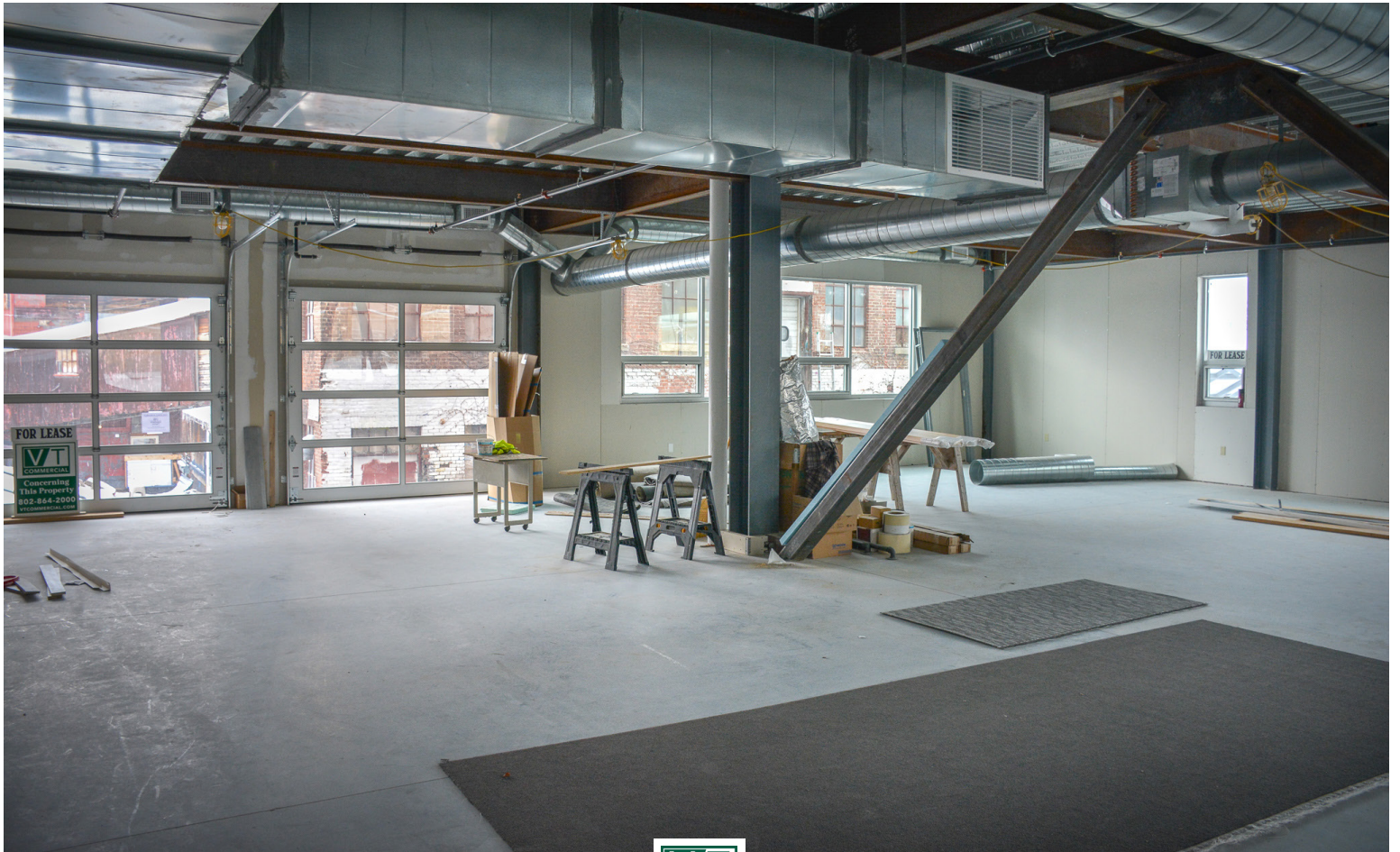
jb@vtcommercial.com

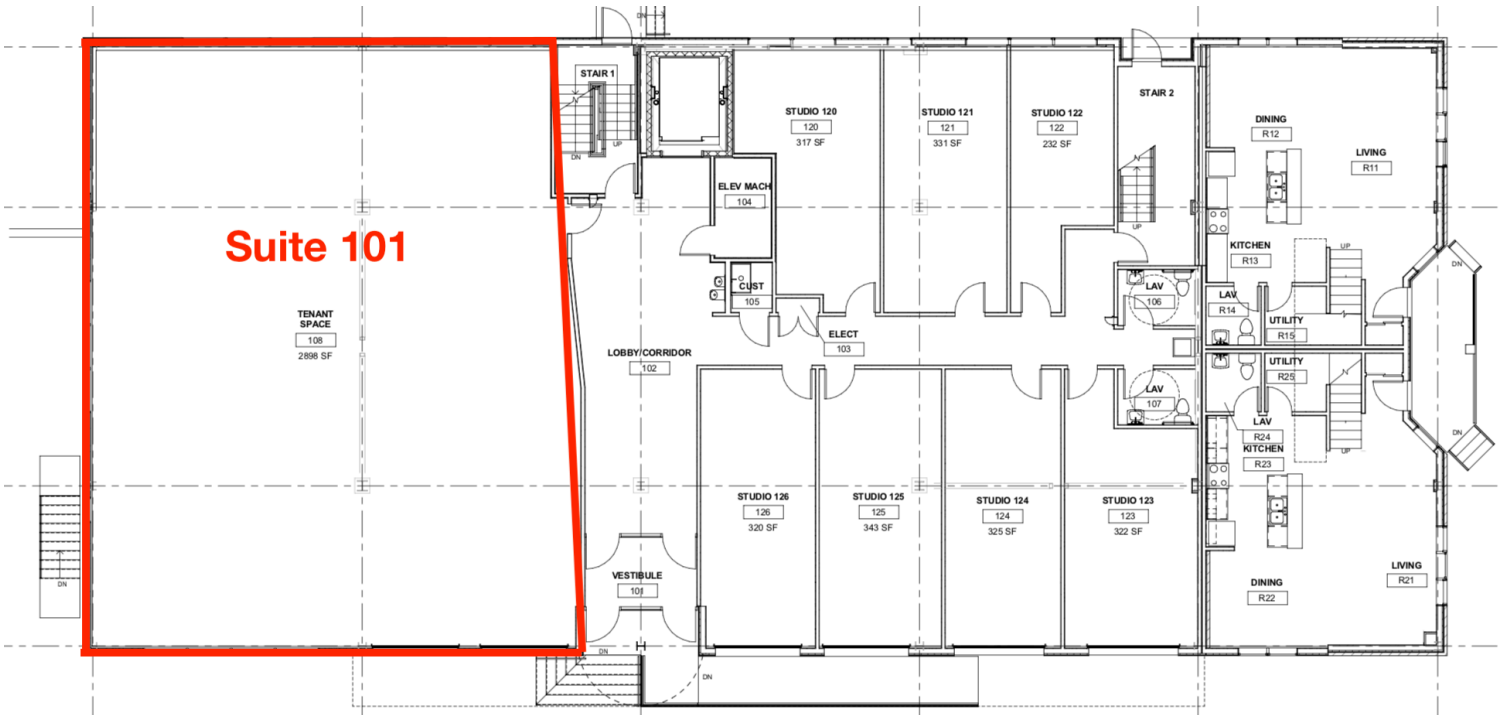
186 COLLEGE ST, SUITE 300

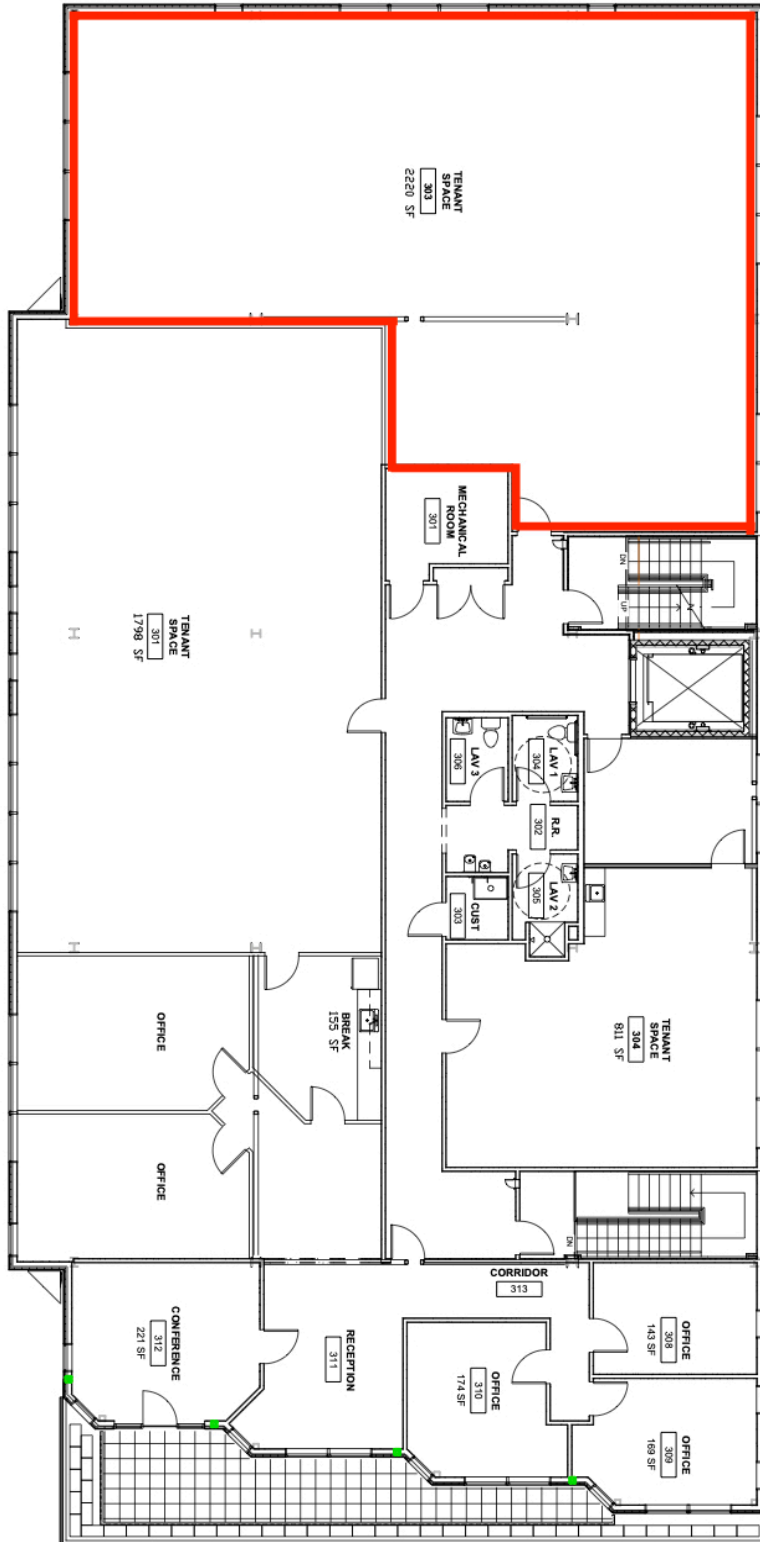
BURLINGTON, VT 05401

www.vtcommercial.com









The Vaults-Space 301+302

20 Howard Street, Burlington, Vermont

GUILLOT VIVIAN VEHMANN ARCHITECTS, INC. Burlington, VT 802.862.9631

NOTES:

1. ALL WORK SHALL BE IN ACCORDANCE WITH THE LATEST EDITIONS OF THE BUILDING CODES AND STANDARDS.

DATE: 20 MAR 20
 REVISED:
 SCALE: 3/32" = 1'-0"
 DRAWING: THIRD FLOOR PLAN
 SHEET: A1.4

