



COMMERCIAL

Real Estate
Business Brokerage

EXCLUSIVELY LISTED FOR LEASE



GIDEON KING HOUSE 35 KING STREET, BURLINGTON, VERMONT

Size: 1,477 sf 2nd floor w/loft
3 private offices
Open work area
Conference room space
Kitchenette & private bath
1,100 lower level, 2 entrances
3 offices, kitchenette & private bath

Amenities: Post & beam construction
Maple hardwood flooring
Abundant natural light
On-site parking
Move-in condition
Lofted ceilings
Minutes to waterfront
Central air conditioning

Location: One block from Perkins Pier!

Available: Immediate

Price: Absolute gross rents!
2nd floor \$2,400/month
Lower level \$1,100/month
Free on-site parking!!!



Contact:

Tony Blake

x 13

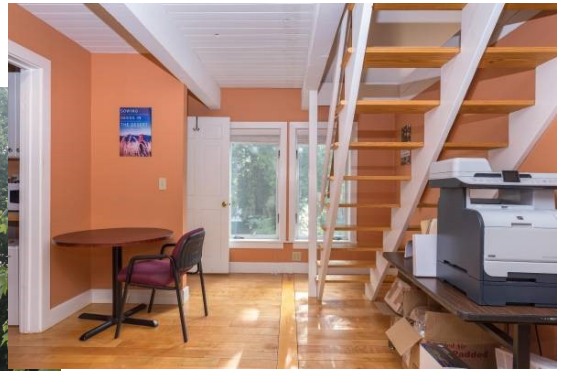
P: 802-864-2000
F: 802-862-2440

tony.blake@vtcommercial.com
www.vtcommercial.com

186 College Street
Burlington, Vermont 05401

Information contained herein is believed accurate but is not warranted. This is not a legally binding offer to lease.

Second Floor Suite



Lower Level Suite



Gideon King House	
BASEMENT - BRICK BUILDING	
1	
FIRST FLOOR - BRICK BUILDING	
2	alissa fromkin/massage therapy
3	AMY POLAND, LCMHC
4	CSL SOFTWARE SOLUTIONS
SECOND FLOOR - BRICK BUILDING	
5	BTY PROPERTY MANAGEMENT
6	BETTY MOORE-HAFTER, MA
7	BTR PSYCH THERAPY
THIRD FLOOR - BRICK BUILDING	
8	
BASEMENT - ADDITION	
9	MICHAEL DORR, M.S.
FIRST FLOOR - ADDITION	
10	CSL SOFTWARE SOLUTIONS
SECOND FLOOR - ADDITION	
11	CHELSEA GREEN PUBLISHING