



COMMERCIAL

Real Estate
Business Brokerage

EXCLUSIVELY LISTED FOR LEASE

Contact:

Tony Blake

x 13



GATEWAY BUILDING

553 ROOSEVELT HIGHWAY, COLCHESTER, VT

- Size:** 1,034 & 4,199+/- square feet
1st & 2nd floor suites
Multiple private offices
Open work areas
Conference room
- Amenities:** Lots of natural light
Excellent exposure!
On-site parking
Move-in condition
Flexible floor plans
Across from Costco!
Signature building
- Location:** *Adjacent to Exit 16 of I89*
- Price:** Starting at \$11.00/sf NNN
(\$7.22/sf includes natural gas)
- Available:** Later summer

Beautiful Class A office building with recently renovated two story lobby providing an abundance of sunlight. All suites are surrounded by glass!



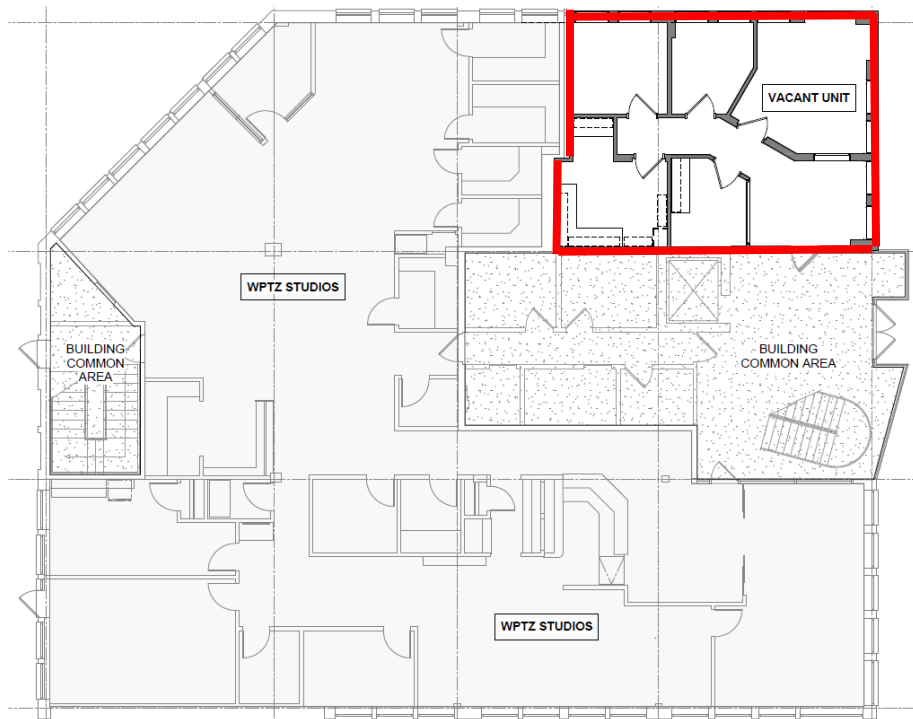
P: 802-864-2000
F: 802-862-2440

tony.blake@vtcommercial.com
www.vtcommercial.com

186 College Street
Burlington, Vermont 05401

Information contained herein is believed accurate but is not warranted. This is not a legally binding offer to lease.

First Floor, 1,034 square feet



Second Floor, 4,199 square feet

