

# FOR LEASE

## PARK PLAZA - DOWNTOWN BURLINGTON OFFICE SPACES

95 St. Paul Street, Burlington, Vermont



95 St. Paul Street is a conveniently located office building in central downtown Burlington. It is part of the Park Plaza mixed use office & retail complex. It is located directly across from City Hall Park. The building is approximately 30,000 sf and 4 stories tall and provides on site parking in it's attached 2 level parking garage. The Church Street Marketplace is a short block away.

### AVAILABLE SPACES:

Office Suite 300 - 2,648 sf  
Office Suite 340 - 1,180 sf

### PRICE:

Suites range from \$12.50 to \$16.50 nnn depending on the space and fit up needs.

\* nnn's run approximately \$7.68 psf plus utilities

### AVAILABLE:

Immediately

### PARKING:

At market rates

### LOCATION:

Central Downtown Burlington

Information contained herein is believed to be accurate, but is not warranted. This is not a legally binding offer to sell or lease.



For more information, please contact:

YVES BRADLEY | BILL KIENDL

802-363-5696 | 802-238-2048

yb@vtcommercial.com | bk@vtcommercial.com

208 FLYNN AVENUE, STUDIO 2i

BURLINGTON, VT 05401

www.vtcommercial.com







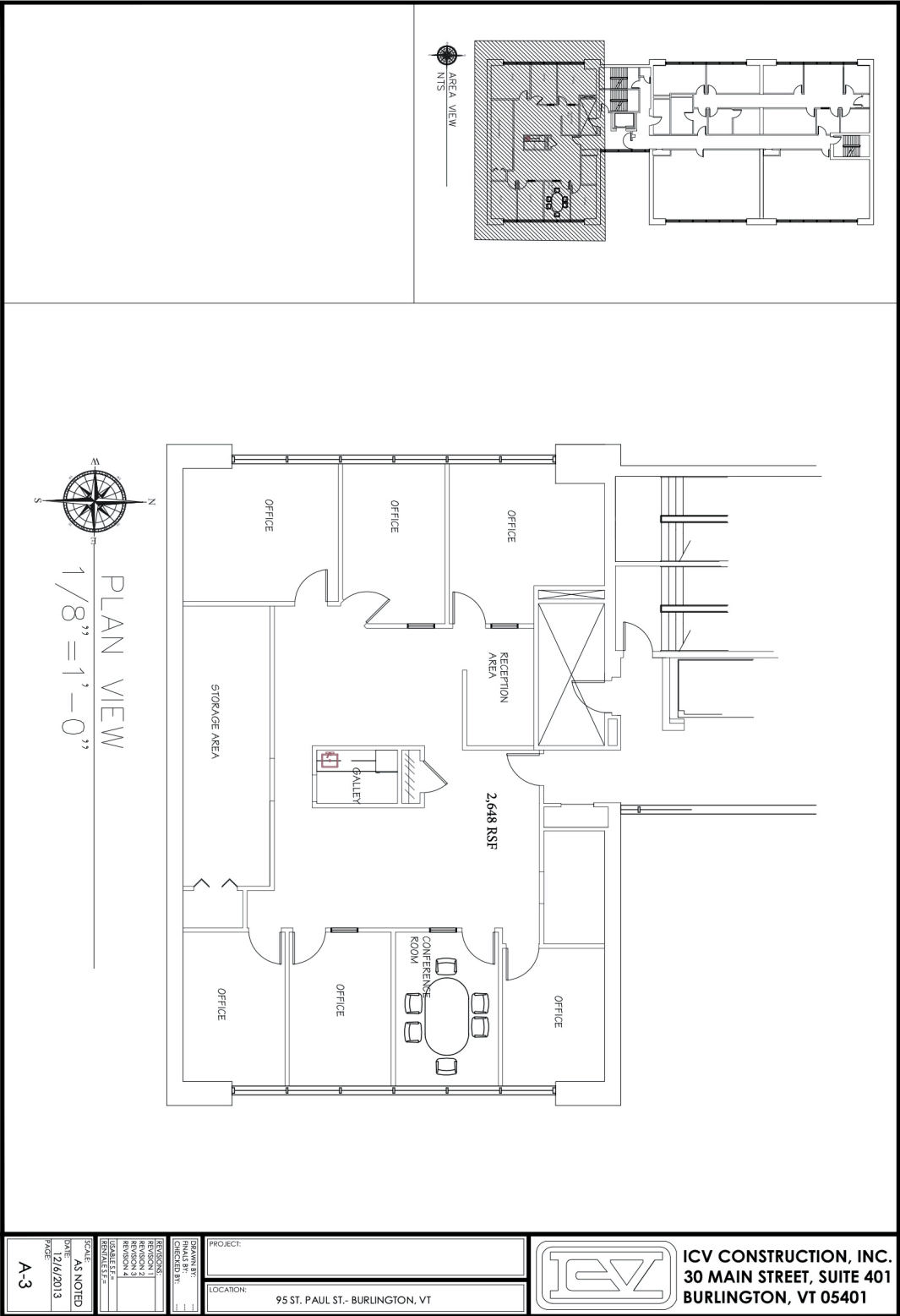
# Suite 300

3rd Floor - As-Is Floor Plan

2,648 sf

Base rent \$12.50 - \$16.50 nnn

\* Estimated NNN expenses run about \$7.68 psf plus utilities



# Suite 340

3rd Floor - As-Is Floor Plan

1,180 sf

Base rent \$12.50 - \$16.50 nnn

\* Estimated NNN expenses run about \$7.68 psf plus utilities

