



FOR LEASE

QUALITY OFFICE SPACE FOR LEASE

336 WATER TOWER CIRCLE, COLCHESTER

Size: 1,800 sf +-

Rate: \$2,500 per Mo.

Location: Ground Floor

Utilities: Paid by Tenant

Parking: Ample on Site

Available: Summer 2013

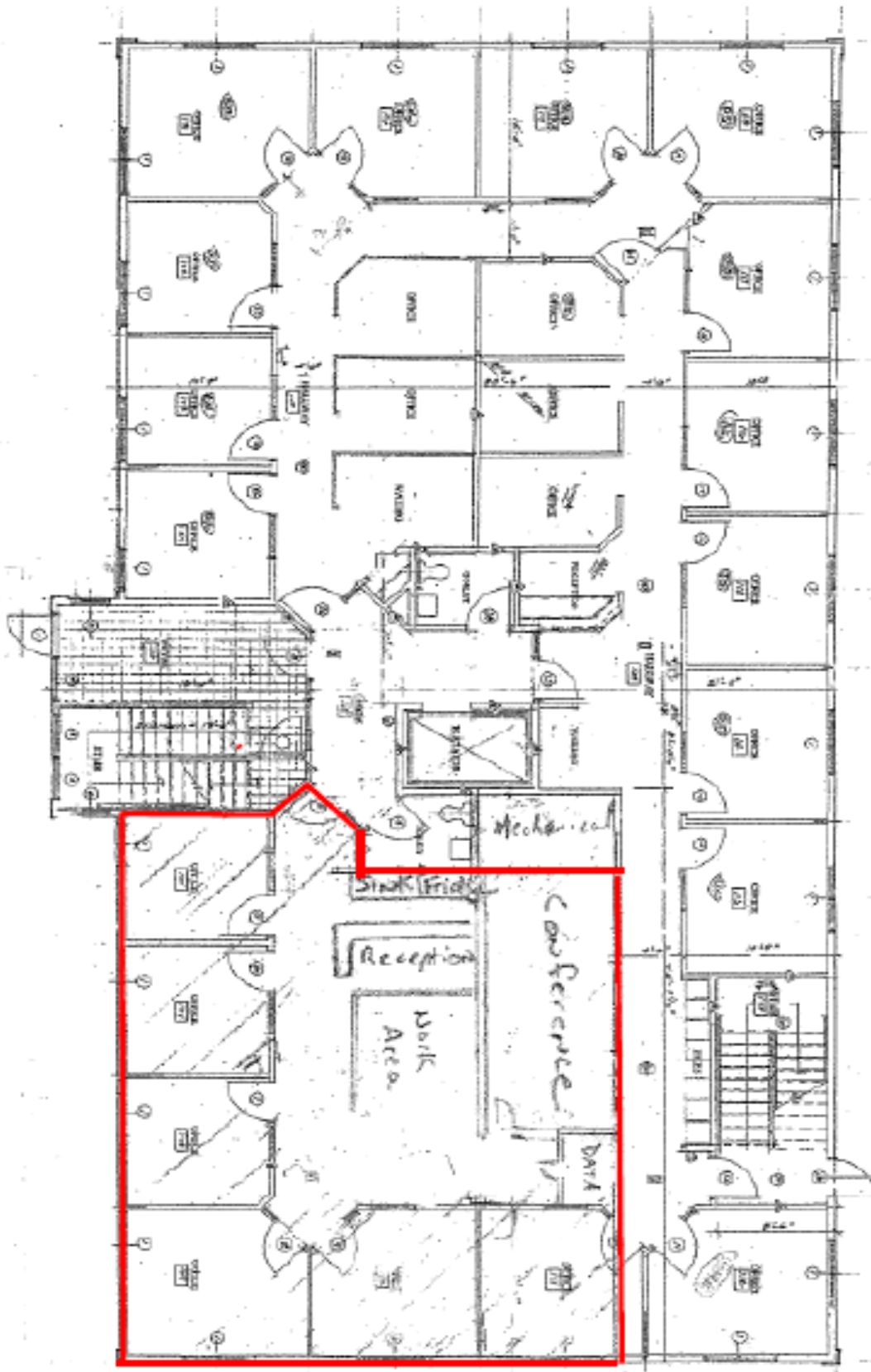
Comments:

- *Very Efficient Office Suite!*
- *6 Private Offices with Large Windows, Conference Room, Kitchenette, Reception Area*
- *Also includes shared use of: Private Gym with showers & lockers, large Conference Room, large Kitchen / Break Room.*
- *Gross plus utilities Lease Rate.*
- *Owner Occupied Landlord.*

P: 802-864-2000
F: 802-862-2440

bk@vtcommercial.com
www.vtcommercial.com

186 College Street
Burlington, Vermont 05401



336 Water Tower Circle - 1,800 sf +