



COMMERCIAL

Real Estate
Business Brokerage

IMMEDIATELY AVAILABLE FOR LEASE

Contact:
Tony Blake
x 13



GREAT DOWNTOWN OFFICES ONE LAWSON LANE BURLINGTON, VT

Size: First floor = 700+/- sf
Second floor = 1,150+/- sf
Third floor = 1,400+/- sf

Location: Central Business District
in the heart of Downtown
1 block from the Marketplace

Price: \$18.00/sf Gross
plus utilities.

Amenities: Lots of character
2 on-site restaurants
Exposed brick & beams
Creative work space
Nearby parking
Walk to Church Street,
Waterfront, bike path,
boathouse, farmer's
market!

Available: Immediate

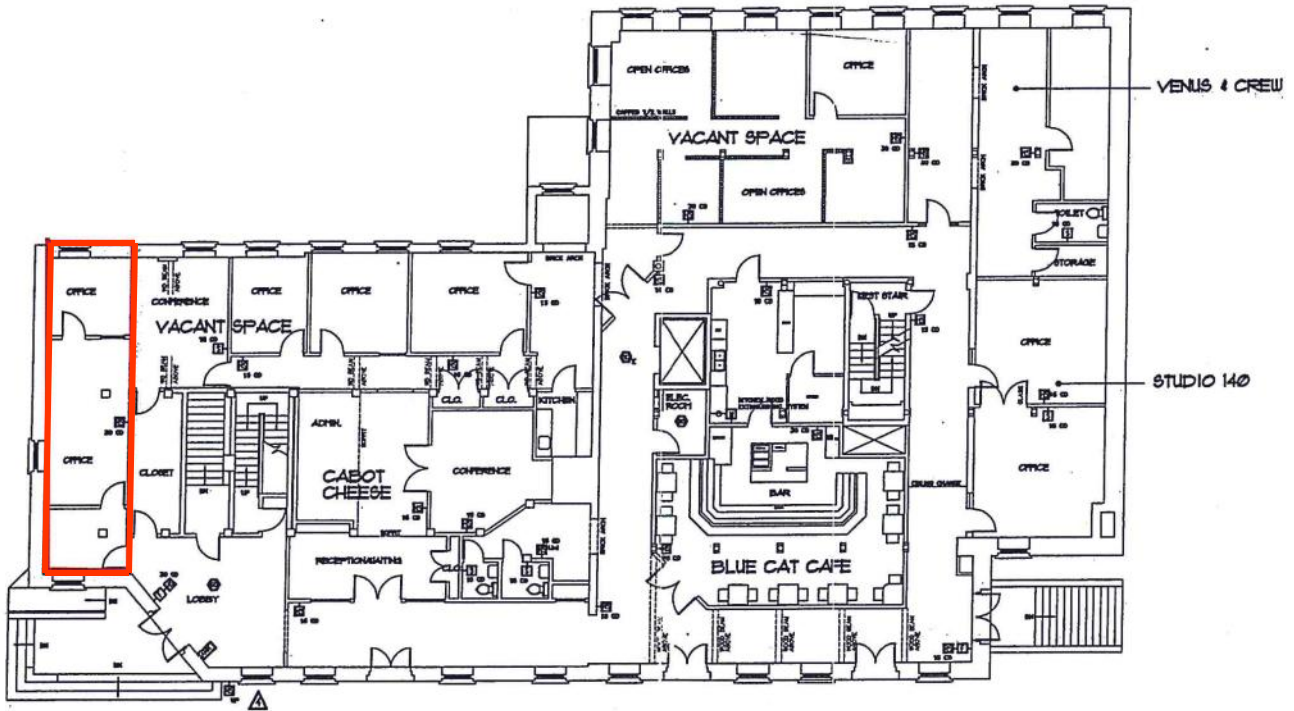


tony.blake@vtcommercial.com
www.vtcommercial.com

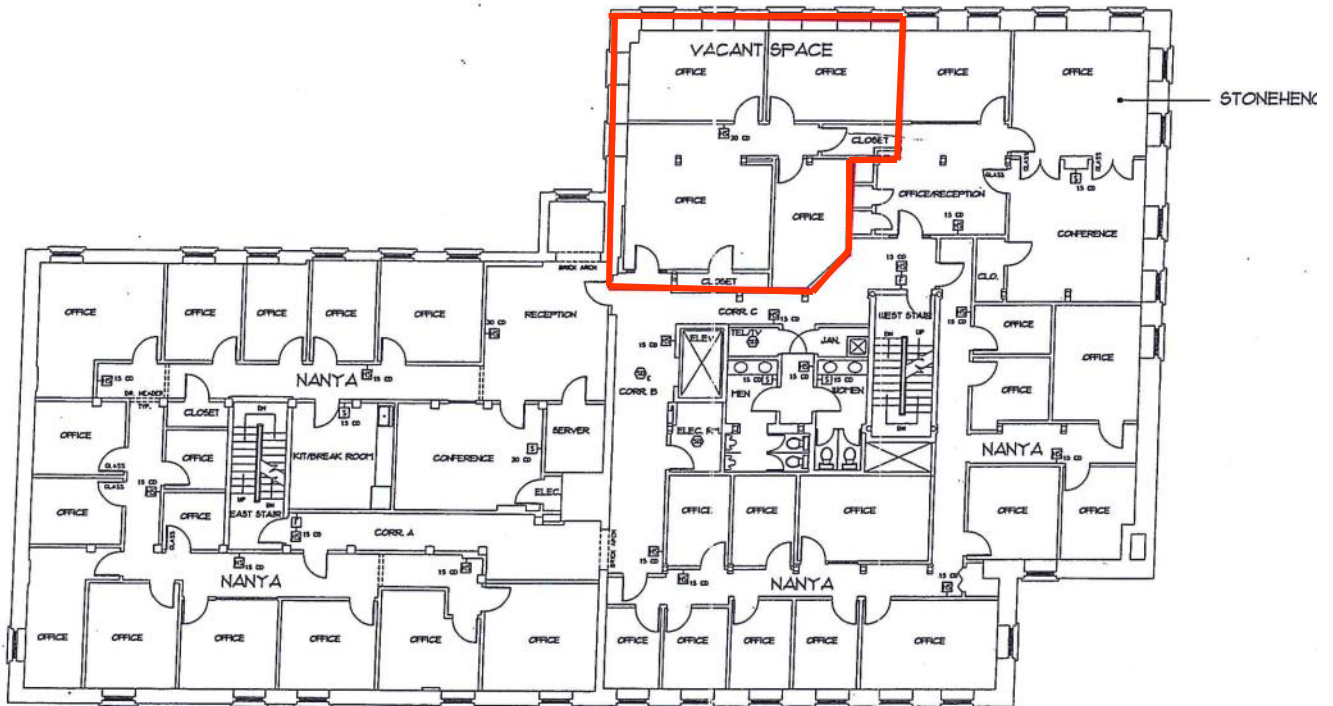
P: 802-864-2000
F: 802-862-2440

186 College Street
Suite 300
Burlington, Vermont 05401

Information contained herein is believed accurate but is not warranted. This is not a legally binding offer to lease.

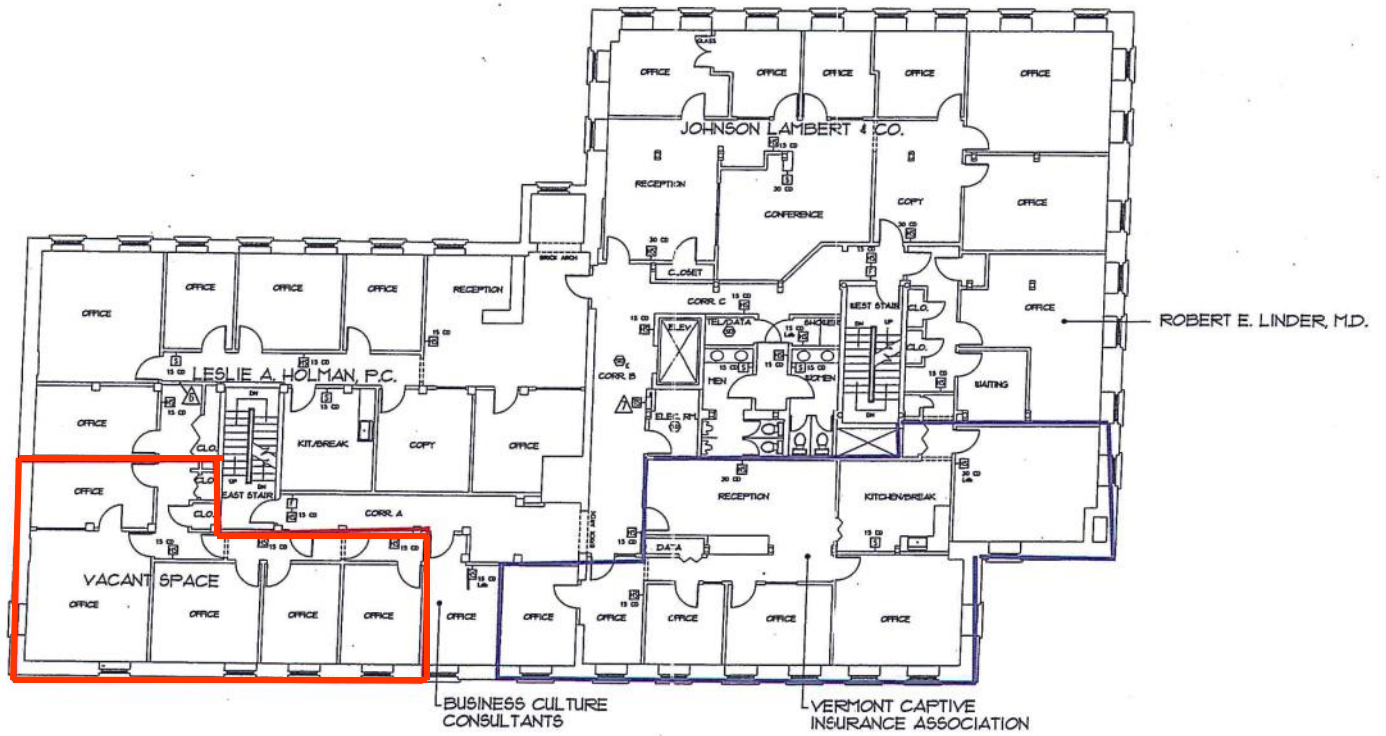


FIRST FLOOR PLAN
SCALE: 1/8" = 1'-0"



SECOND FLOOR PLAN
SCALE: 1/8" = 1'-0"





THIRD FLOOR PLAN
SCALE: 1/8" = 1'-0"

