



COMMERCIAL

Real Estate
Business Brokerage

FOR LEASE

Contact:

Bill

Kiendl

X 12



PREMIUM CHURCH ST. RETAIL

90 CHURCH ST., BURLINGTON

Size 2,464 sq.ft. Retail Level

Size 22' x 112'

Rate: \$30.00 per sq. ft. nnn

NNN: \$8.89 per sq. ft. (2007)

Available: Immediately

Comments:

- This location is between College & Bank Streets on the best retail block in the Church Street Marketplace.
- Formerly occupied by The Learning Express it is surrounded by national retailers such as, Urban Outfitters, Yankee Candle, Brueggars Bagels and the Body Shop.
- Space comes with a full basement and has rear delivery access.
- Energy efficient utilities and updated HVAC system.

P: 802-864-2000

F: 802-862-2440

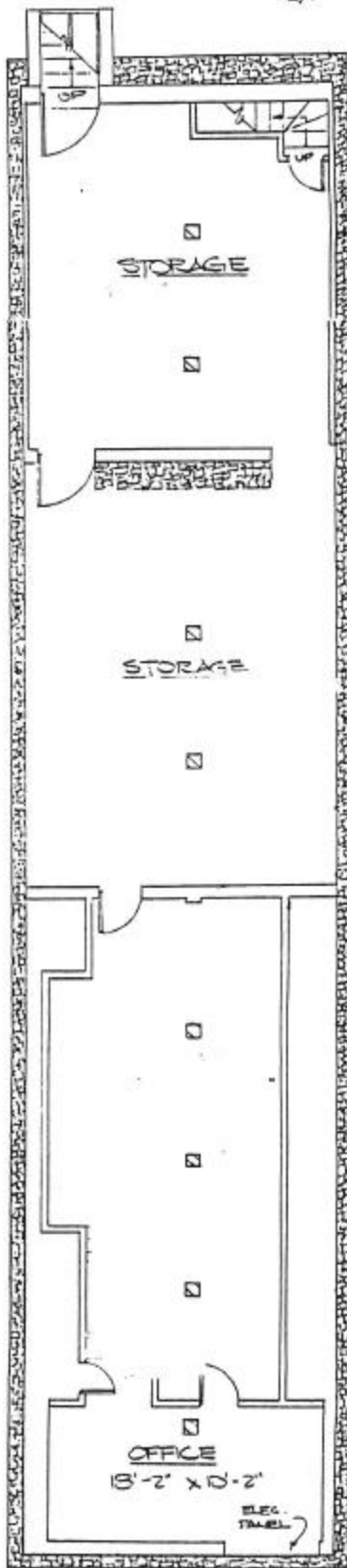
bk@vtcommercial.com

www.vtcommercial.com

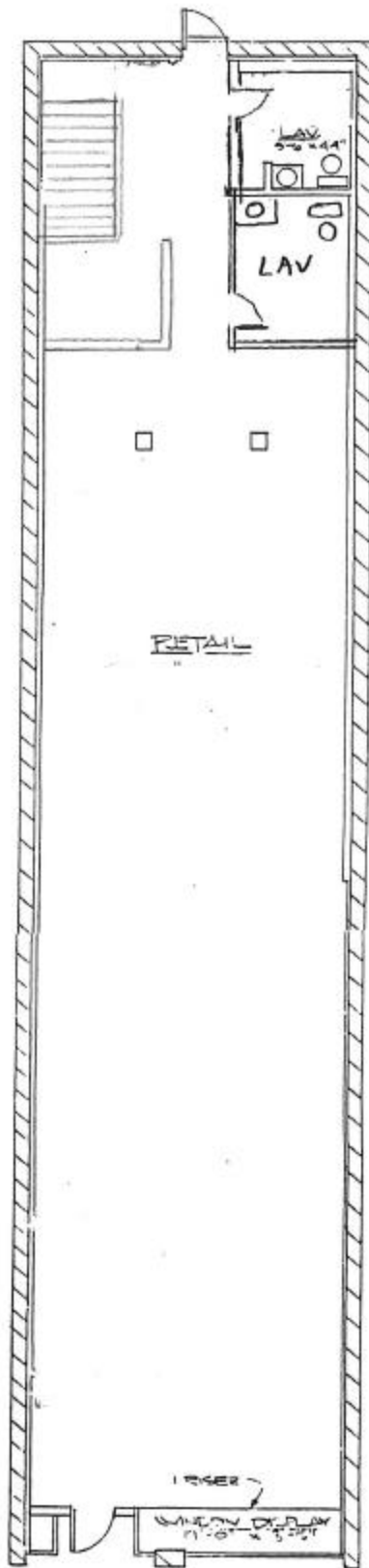
186 College Street
Burlington, Vermont 05401



90 CHURCH ST.



Basement Level Plan



Street Level Plan